



# **ANNUAL REPORT**

## **2015**

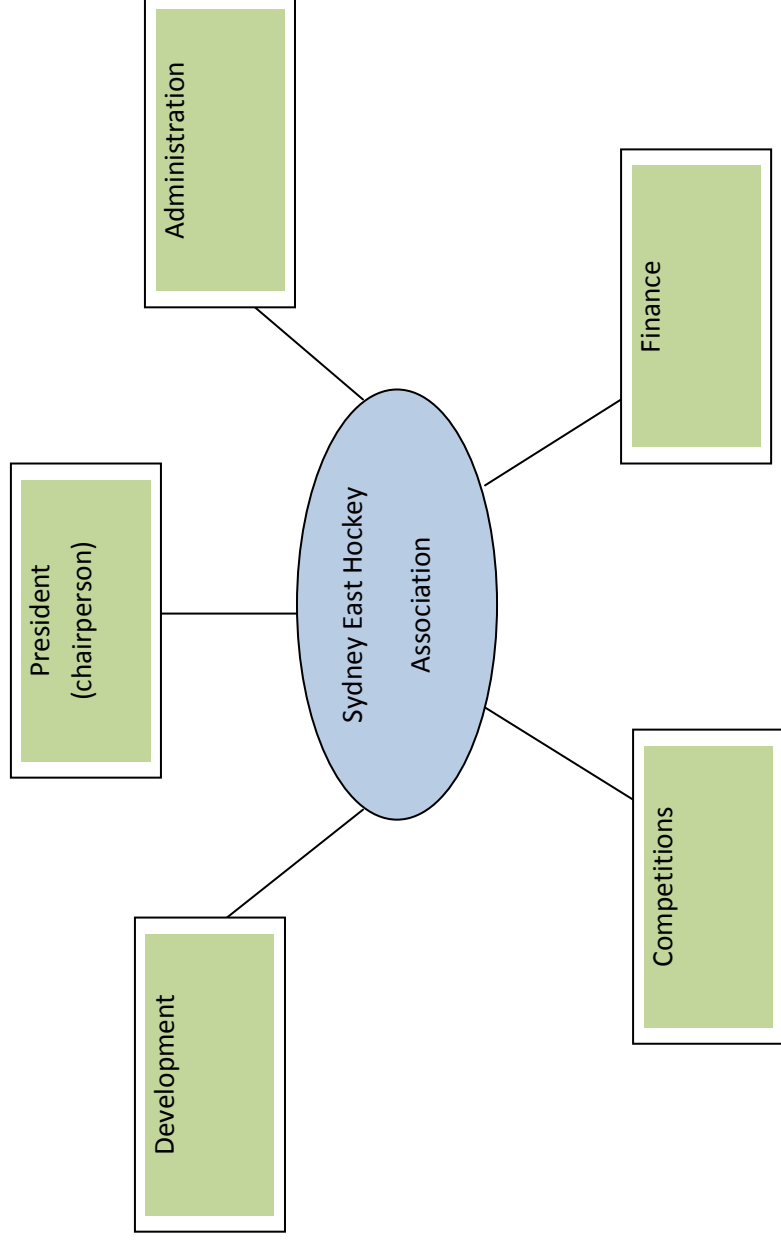


## **ANNUAL REPORT CONTENTS**

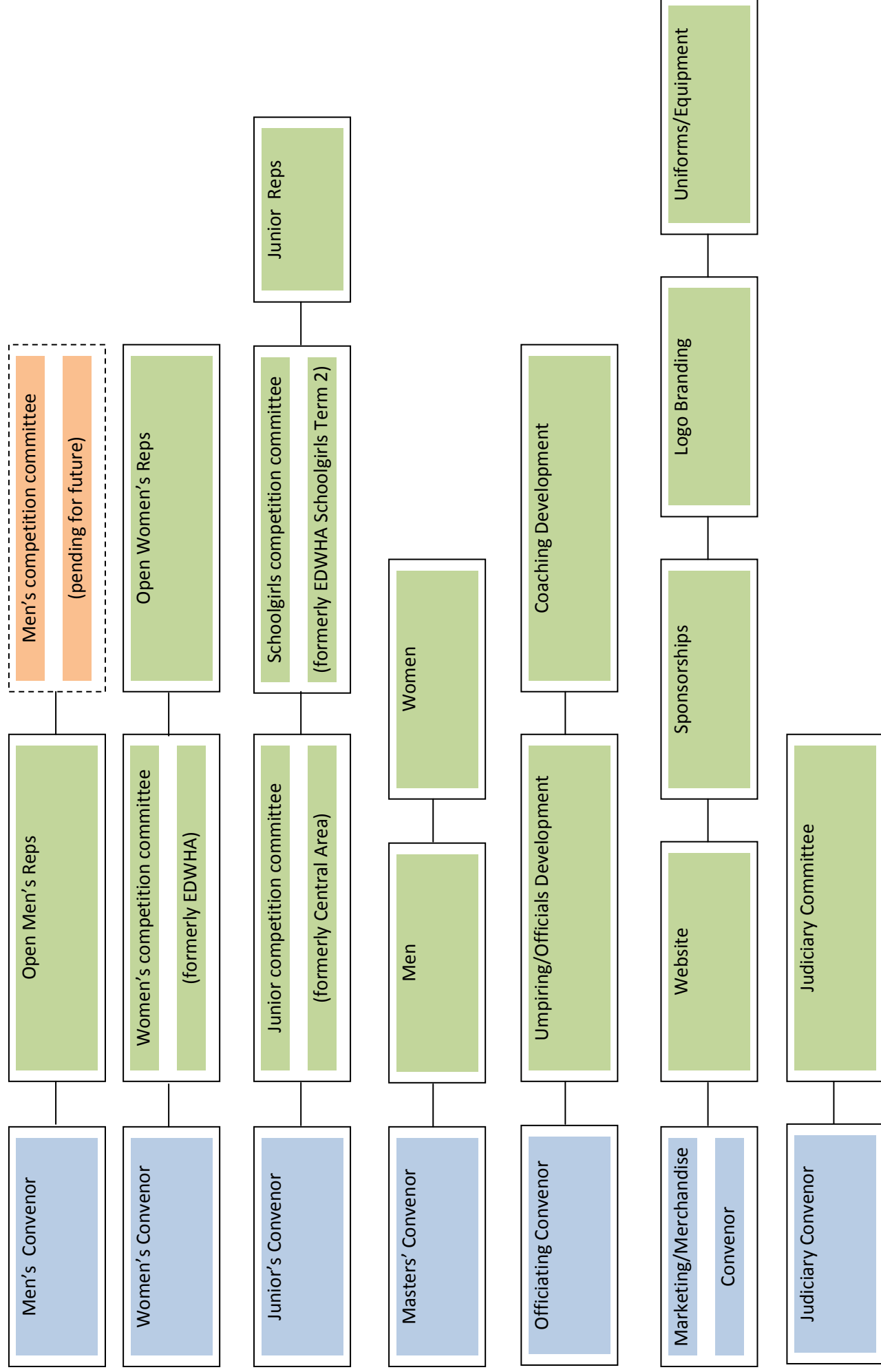
- 2015 SEHA Structure
- 2015 SEHA Directors, Convenors and Committee Members
- President's Report
- Administration Director's Report
- Development Director's Report
- Finance Director's Report
- Finance Report
- Competitions Director's Report
- Convenor and Committees' Reports
- SEHA Representative Field Teams and Reports
- SEHA NSW Representative Field Honours
- SEHA Field Photos
- SEHA Representative Indoor Teams and Report
- SEHA NSW Representative Indoor Honours
- SEHA Indoor Photos
- 2016 SEHA Structure

# Sydney East Hockey Association

## Directors



# Convenors/Committees



# 2015 SEHA Positions

Directors	Name
President	Briony Nilan
Administration	Tanya Arathoon
Finance	Graeme Barnard
Competitions	Danny O'Brien
Development	Kathy Calokerinos
Convenors	
Mens	George Manou
Womens	Alex Lupton
Juniors	Joshua Wiggins
Masters	Carolyn Davies
Officiating	Debbie Dodd
Judiciary	Lisa Roach
Marketing/Merchandise	Cameron Ward
Committee Members	
Open Men's Reps	Emma Ratcliffe
Women's Competition	Tanya Arathoon
	Briony Nilan
	Jodie McIntosh
	Anna Barton
	Sue Brady
	Alison Banks
Open Women's Reps	Alex Lupton
Junior Competition	Michael Mecham
	Anthony Roberts
	David Wells
	Sue Morrison
	Murray Kraa
	Robyn Wiggins
Schoolgirls Competition	Tanya Arathoon
Junior Reps	Andrea Casteriano
	Rebecca Shiels
Men's Masters	George Manou
Women's Masters	Carolyn Davies
	Kylie Norris
Website	Cameron Ward
Sponsorship	Kathy Calokerinos
Logo Branding	Joanne Falla
Uniforms/Equipment	Briony Nilan - uniforms
	Joshua Wiggins - equipment
Umpiring/Officials Development	Marilyn Brown
	Alison Banks
	Joshua Wiggins
	Lisa Roach
Coaching Development	VACANT

# ***PRESIDENT'S REPORT***

---

As my first year as SEHA President, I would firstly like to say thank you to all my fellow Directors, Convenors and Committee members for your assistance and guidance throughout the year.

It was certainly going to be a challenge to set the foundations of a new association created from a merger of four well established associations within Sydney namely, Sydney Hockey Association, Sydney Juniors Hockey Association, Eastern Districts Women's Hockey Association and Canterbury Women's Hockey Association.

To conform with the regulations and governance set by HockeyNSW, the association had to undertake an extensive amount of preparation, planning and review to be able to implement the changes. Without the numerous volunteers willing to give up their spare time to support the association, the changes that have been addressed in year one, would not have been able to be achieved. This is the beginning of a new era so naturally there are still a number of areas that need further development to keep the association moving in a positive direction. I would like to take this opportunity to thank all SEHA members for being patient and understanding throughout the transitional changes.

The current 2015 SEHA structure, policies and procedures have also been reviewed following feedback from all SEHA Convenors resulting in minor changes for 2016. These will evolve with the natural progression of our association.

2016 will see the association concentrating on development and training in umpiring, coaching, officiating and players. I would like to see clubs encourage members to nominate for Convenor and Committee positions. Not only will it benefit the association if positions are filled, it will also be beneficial for your club's development by passing on your skills and training. With having more members gain accreditation in coaching this will have a positive effect on junior player development by having up skilled more members.

Apart from developing more members in specialised areas, it will also allow the clubs to get firsthand knowledge of what is happening within the association and gives all clubs an avenue to provide feedback to the association whether positive or negative. Without members and clubs being part of the association, the association cannot be successful.

It was evident from feedback, that not all members and clubs were fully aware of the changes taking place. 2016 will see a fully functional and improved website to allow information to be easily accessible for all members. The SEHA Facebook page also allows the association to post important information and dates, reminders, showcase representative photo's and results. This is in addition to club delegates being provided with

correspondence directly from SEHA with the request to distribute the information to all members.

It was fantastic to see SEHA represented in 19 field teams and to date 7 indoor teams. The SEHA representative uniforms have had positive reviews not only from players and parents but also from other hockey associations and HockeyNSW. Please take the time to read all the team listing information for all the SEHA representative teams and all the members who achieved NSW representative honours. From all reports, all players and officials that represented SEHA conducted themselves with pride, excellent sportsmanship and professionalism.

No doubt that this has been a tremendous year of change and again I thank everyone who has helped SEHA in its inaugural year. Without the dedicated, passionate and committed volunteers, SEHA would not have been able to achieve the 2015 outcomes so successfully. I look forward to my second year as SEHA President and working with the 2016 SEHA Convenors and Committees for the betterment of a great sport we all love.

Briony Nilan  
President

# *ADMINISTRATION DIRECTOR'S REPORT*

---

## *Website*

We were pleased to be able to launch a new combined website late in 2015. The year started with two separate sites one for SEHA and one for the Womens Competition which was sponsored by Calgus and hosted by Interact Sports. This site was very functional and we were able to load the womens draw and pointscores as well as easily update news items. For this reason we then merged the SEHA site to the womens site and retained the domain name [www.seha.com.au](http://www.seha.com.au).

## *Communication*

This was a challenging aspect at the start of the year and it was decided to open generic email addresses for the various portfolios in an effort to make it easier for members to communicate with committees and convenors.

## *Registrations*

Another change by Hockey NSW of registration processes brought a new problem for the start of the season and clubs are to be congratulated for their flexibility in loading all their registrations online. Players were also required to pay their Hockey NSW fee direct this year which was also a problematic concept as it was introduced at the 11<sup>th</sup> hour by Hockey NSW. Nonetheless we managed to achieve this as well.

## *Judiciary and Misconduct*

We had several matters which require attention this year. A new Judiciary and Misconduct Policy was introduced which brought with it the concept of points accumulation for warning cards and then early pleas for offences. This was utilised on three occasions within the Women's competition with one referral to a Judiciary. There were also two misconduct matters for the Junior competition which needed to be attended to.

Tanya Arathoon  
Administration Director



# DEVELOPMENT DIRECTOR'S REPORT

---

The Sydney East Hockey Association's development activities include being:

*"Responsible for the planning and implementation of all aspects of development, as it relates to players; officials; clubs; and the game of hockey alike"*

A summary of SEHA's development activities undertaken this year follow:

1. Established a relationship with HNSW to align our development initiatives with the governing body.
  - A HNSW presentation was made to our Board at season commencement.
2. Regional Coaching Coordinator (RCC) Andy van Pelt worked with SEHA to deliver:
  - RCC visits to each member junior club at local training nights
  - RCC visits to senior clubs by request at local training nights
  - Schools program initiated in our region
3. Junior development programs and pathways :
  - Centre of Development (COD) programs u9 to u11 and u13 to u15 (March 2015) and (November to February 2016)
  - Metro Sydney Academy for tier 2 u16-18s (November to February)
  - HNSW School holiday (u12) development Camp in school holidays – 7 July
  - SEHAs U13 State representatives (x3) extra pre-tournament training session before going to national championships in Sydney.
4. Training and Development Accreditation Opportunities
  - Level 1 Coach accreditation workshops
    - i. 18 May at David Phillips
    - ii. 23 June at Cintra
  - Level 1 Umpire Accreditation
  - Beginner sessions for new junior umpires - practical junior group sessions led by Debbie Dodd 11 July at Cintra
  - Coaching to umpire candidates and those seeking accreditation
  - Support to our junior umpires for state champs
  - Invite expressions of interest for those that want to be developed further
  - Technical Official accreditation – investigating the potential of running a SEHA course in future.
5. Schools Program
  - A list of schools in our region compiled and invitations for hockey school sport 7 week programs.
  - Schools: SGHS, Double Bay, GyMEA, Int Grammar, Mariah College, Kogarah
  - Go Active Bankstown 31 Oct
  - School knockout umpires provided on request
  - Go Active Bankstown 31 October

A huge thank you to all involved especially Andy van Pelt and Debbie Dodd for their huge contribution to the SEHA development programs. I look forward to next year where we aim to add value to member clubs and to inspire our players, coaches, umpires and officials individually to gain accreditation and in their growth ...the Board appreciates and thanks all involved for the work and effort and welcomes feedback.

Kathy Calokerinos  
Development Director

## ***FINANCE DIRECTOR'S REPORT***

---

Accounting for the association this year was a little difficult with activities, by necessity, getting underway even before the association was formally established, along with the time taken to establish operational bank accounts. To assist with this, the EDWHA offered the use of their bank account for all transactions, until the SEHA accounts were fully functional. Although helpful, this made accounting more complicated than necessary.

The three competitions, SEHA Women's, SEHA Junior Schoolgirls and SEHA Juniors, were each run as autonomous activities by the respective committees, as such these figures are provided for information and future budgeting purposes only. All other activities were fully funded by SEHA funds.

There are currently a number of unpresented cheques, totalling in excess of \$33,500. A number of these are replacements for previously issued lost or outdated cheques, some more than seven months old. My intent is to make all payments via electronic transfer where possible, to replace this inefficient payment method. I will be introducing measures that will make the collection of information; record keeping; and payments to officials more efficient.

Despite the challenges, I feel the association is well placed to continue to provide a sound platform of support to our competitions and representative teams, in all forms. With plenty still to do, I look forward to working with the Board, Convenors and Committees to make this association even stronger.

Graeme Barnard  
Finance Director



## **Financial Report**

**2014-15**

Prepared by  
G Barnard  
Finance Director



PO Box 239  
MIRANDA NSW 1490  
Ph: 8544 1119 Fax: 8544 8737  
Email: [samantha@guardianbookkeeping.com.au](mailto:samantha@guardianbookkeeping.com.au)  
ABN: 15 145 080 995

8 November 2015

TO WHOM IT MAY CONCERN,

**RE: SYDNEY EAST HOCKEY ASSOCIATION – ABN NO. 98 153 957 262**

I have audited the information provided and produced the accompanying Balance Sheet and related Statement of Income (Profit & Loss) as well as a detailed Profit and Loss per area for Sydney East Hockey Association for the period 1 October 2014 to 30 September 2015.

I have assessed this audit based on the Spreadsheets and information provided by Graeme Barnard to obtain reasonable assurance that the financial figures are free of material misstatement.

Due to statutory requirements for compulsory GST registration due to income levels; I have now registered Sydney East Hockey Association for GST with the ATO.

I have audited the GST liabilities of Sydney East Hockey Association and an annual BAS has been provided.

In my opinion the financial statements and balance sheet present fairly accurately in relation to the financial position of Sydney East Hockey Association for the period 1 October 2014 to 30 September 2015.

If you have any questions please do not hesitate to contact me on 0431 117 705.

Yours faithfully

  
Samantha Sharp  
Managing Director



BAS agent  
93683015

# Sydney East Hockey Association

## Income & Expenditure Break-up by Group Dec 2014- Sept 2015

Notes

### Womens (Comp)

#### Income

Fees	\$ 72,447.14	
<b>Total Income</b>		<b>\$ 72,447.14</b>

#### Expenditure

Turf Hire	-\$ 60,886.75	
Umpiring	-\$ 1,851.90	
Officials	-\$ 9,486.80	
Equipment	\$ 0.00	
Other	-\$ 2,424.05	
<b>Total Expenditure</b>		<b>-\$ 74,649.50</b>

<b>Womens - Nett Position</b>		<b>-\$ 2,202.36</b>	1
-------------------------------	--	---------------------	---

### Schoolgirls (Comp)

#### Income

Fees	\$ 43,560.00	
<b>Total Income</b>		<b>\$ 43,560.00</b>

#### Expenditure

Turf Hire	-\$ 22,988.50	
Umpiring	-\$ 11,825.00	
Refunds	-\$ 6,930.00	
Equipment	-\$ 778.90	
Other	-\$ 1,404.71	
<b>Total Expenditure</b>		<b>-\$ 43,927.11</b>

<b>Schoolgirls - Nett Position</b>		<b>-\$ 367.11</b>
------------------------------------	--	-------------------

# Sydney East Hockey Association

## Income & Expenditure Break-up by Group Dec 2014- Sept 2015

### Open Womens Reps

#### Income

Fees	\$ 2,020.00	
<b>Total Income</b>		<b>\$ 2,020.00</b>

#### Expenditure

Turf Hire	-\$ 242.00	
Competition Entry	-\$ 550.00	
Competition Fees	-\$ 735.00	
Equipment	-\$ 10.00	
<b>Total Expenditure</b>	<b>-\$ 1,537.00</b>	
<b>Open Women's Nett Position</b>		<b>\$ 483.00</b>

### Open Mens Reps

#### Income

Fees	\$ 1,839.00	
<b>Total Income</b>		<b>\$ 1,839.00</b>

#### Expenditure

Turf Hire	\$ 0.00	
Competition Entry	-\$ 550.00	
Competition Fees	-\$ 193.00	
Other	-\$ 726.00	
<b>Total Expenditure</b>	<b>-\$ 1,469.00</b>	
<b>Open Men's Nett Position</b>		<b>\$ 370.00</b>

### Masters Reps

#### Income

Fees	\$ 14,901.00	
<b>Total Income</b>		<b>\$ 14,901.00</b>

#### Expenditure

Accommodation Booking	-\$ 3,386.25	
Comp Entry Fees	-\$ 5,208.00	
Masters State Entry	-\$ 2,200.00	
<b>Total Expenditure</b>	<b>-\$ 10,794.25</b>	
<b>Masters - Nett Position</b>		<b>\$ 4,106.75</b>

# Sydney East Hockey Association

## Income & Expenditure Break-up by Group Dec 2014- Sept 2015

### Junior Reps

#### Income

Rep Team Fees	\$ 36,001.00	
<b>Total Income</b>		<b>\$ 36,001.00</b>

#### Expenditure

Turf Hire	-\$ 7,171.49	
Carnival Entry	-\$ 14,172.00	
Uniforms	-\$ 8,790.00	
Umpiring	-\$ 420.00	
Coaching	-\$ 3,230.00	
Equipment	-\$ 1,732.61	
Other	-\$ 125.00	
<b>Total Expenditure</b>	<b>-\$ 35,641.10</b>	
<b>Juniors - Nett Position</b>		<b>\$ 359.90</b>

### Indoor Reps

#### Income

Fees	\$ 7,360.00	
Other Income		
<b>Total Income</b>		<b>\$ 7,360.00</b>

#### Expenditure

Comp Entry	-\$ 3,770.00	
Court Hire	-\$ 450.00	
Coaching	\$ 0.00	
Umpiring	\$ 0.00	
Uniforms	\$ 0.00	
Equipment	-\$ 400.00	
Refunds	\$ 0.00	
Other	\$ 0.00	
<b>Total Expenditure</b>	<b>-\$ 4,620.00</b>	
<b>Indoor Reps - Nett Position</b>		<b>\$ 2,740.00</b>



# Sydney East Hockey Association

## Income & Expenditure Break-up by Group Dec 2014- Sept 2015

### Administration

#### Income

Association Fees	\$ 30,206.76	
Sponsorship	\$ 3,253.15	
Interest	\$ 90.16	
Other	\$ 1,663.00	
<b>Total Income</b>		<b>\$ 35,213.07</b>

#### Expenditure

HNSW Affiliation Fee	-\$ 14,932.50	
Other	-\$ 440.94	
Uniforms	-\$ 2,898.60	
<b>Total Expenditure</b>	<b>-\$ 18,272.04</b>	
<b>Administration - Nett Position</b>		<b>\$ 16,941.03</b>

# Sydney East Hockey Association

## Profit & Loss Statement - Detail FY 2014-2015

### Income

Women's Comp	\$ 65,861.04	34.2%
Schoolgirls Comp	\$ 39,600.00	20.6%
Open Women's Reps	\$ 1,836.36	1.0%
Open Men's Reps	\$ 1,671.82	0.9%
Masters Reps	\$ 13,546.36	7.0%
Junior Reps	\$ 32,728.18	17.0%
Indoor Reps	\$ 6,690.91	3.5%
Admin	\$ 27,669.03	14.4%
Sponsorship	\$ 2,957.41	1.5%

<b>Total Income</b>	<b>\$ 192,561.11</b>	
---------------------	----------------------	--

### Expenditure

HNSW Affiliation Fee	\$ 13,575.00	8.1%
Comp/Champ's Entries	\$ 25,442.72	15.1%
Turf/Court Hire	\$ 83,799.86	49.9%
Umpiring	\$ 14,096.90	8.4%
Officials	\$ 9,079.91	5.4%
Coaching	\$ 3,230.00	1.9%
Equipment Depreciation	\$ 891.36	0.5%
Uniform Depreciation	\$ 3,542.00	2.1%
Refunds	\$ 6,300.00	3.7%
Other	\$ 5,025.89	3.0%
Accommodation	\$ 3,078.41	1.8%

<b>Total Expenditure</b>	<b>\$ 168,062.05</b>	
--------------------------	----------------------	--

<b>Gross Profit</b>	<b>\$ 24,499.06</b>	<b>12.7%</b>
---------------------	---------------------	--------------

<b>Other Expenses</b>	<b>\$ 0.00</b>	
-----------------------	----------------	--

<b>Operating Profit</b>	<b>\$ 24,499.06</b>	
-------------------------	---------------------	--

<b>Other Income</b>		
EDWHA Bank	\$ 1,706.99	
	<b>\$ 1,706.99</b>	

<b>Nett Profit/(Loss)</b>	<b>\$ 26,206.05</b>	
---------------------------	---------------------	--

# Sydney East Hockey Association

## Balance Sheet FY 2014-2015

### Assets

#### Cash at Bank

EDWHA Account	\$ 42,518.39	
SEHA ANZ	\$ 12,234.91	
Trade Debtors	\$ 1,440.00	
		<hr/>
		\$ 56,193.30

#### Equipment/Stock

Equipment	\$ 2,646.83	
Equip Accum Dep	-\$ 882.27	
Uniforms	\$ 10,626.00	
Uniform Accum Dep	-\$ 3,542.00	
		<hr/>
		\$ 8,848.56

<b>Total assets</b>		<hr/>	<b>\$ 65,041.86</b>
---------------------	--	-------	---------------------

### Liabilities

Unpresented Cheques		\$ 33,588.10	
GST Collected	\$ 19,247.10		
GST Paid	-\$ 13,999.39		
		<hr/>	
Total GST Liabilities		\$ 5,247.71	

<b>Total Liabilities</b>		<hr/>	<b>\$ 38,835.81</b>
--------------------------	--	-------	---------------------

<b>Nett Assets</b>		<hr/>	<b>\$ 26,206.05</b>
--------------------	--	-------	---------------------

### Equity

Retained Earnings	\$ 0.00		
Current Earnings	\$ 26,206.05		
		<hr/>	
<b>Total Earnings</b>		\$ 26,206.05	
<b>Total Equity</b>		<hr/>	<b>\$ 26,206.05</b>

## **Notes accompanying Financial Statement**

### **Scope**

The income and expenditure by group figures are provided for information only and are “raw” figures, including GST.

These figures only take into account income and expenditure from December 2014, when these portfolios transferred to SEHA, to September 2015; except for the Junior Representatives figures, which include all income and expenditure.

The 2015 SEHA Women’s, Junior Schoolgirl’s and Junior mixed (ex CAJHA) competitions were run as autonomous entities by the entities running the previous competitions, with figures provided ‘reporting’ purposes only. There were no figures provided for the SEHA Junior competition.

### **Notes:**

1. The SEHA Women’s competition figures show an unsubstantiated loss of \$2,202 due to some of the income appearing prior to December 2014 and a larger than expected turf hire invoice received long after the completion of the 2014 season.
2. The Indoor Representative season is still underway and is not yet showing all the income and expenditure for that portfolio.
3. Cash at Bank transferred from EDWHA at end of FY. This is held to cover unrepresented cheques drawn prior to Dec14.

# *COMPETITIONS DIRECTOR'S REPORT*

---

The first year of our new association run competitions (women's and juniors), were essentially the old Eastern Districts Women's Competition and the Central Junior Competition.

As there was such a rush to put the association together, the new board was acting on a lot of what the working party had put in place, meaning, the competition committees administering these competitions ran them pretty much in line with previous year's practices.

The board was involved in setting up new policy and procedures around these competitions, but, in the main, we left the running of these competitions to the committees.

We were blessed to have the people we did have on these committees and my thanks to all who served on these committees, for their wonderful contributions with special praise for the various convenors across all areas of the association.

Were there mistakes, communication issues, ridiculously short time-frames and a lack of direction at times? Yes!

Were we fully to blame? No!

Was the board at times in conflict with some policies and procedures established by the working party? Yes!

Did these present problems? Yes!

Did the working party do a good job? Yes!

All of the matters raised above were all the more evident when we were looking at our representative teams. Whether it be selection policies, management practices around the teams, appointment of coaches/managers and working with HNSW in seeking appropriate team gradings at championships, we were mostly relying on policy and procedures set out by the working party.

We were flying a little blind here, but we were lucky that a few members of the board had served on the working party and had also been dealing with HNSW to give us some clarity.

I must thank all those involved in this key aspect of our association charter and especially the players and their parents in the case of our juniors, who bought into SEHA and made the year, I think on balance a great 1<sup>st</sup> year.

I haven't discussed some other competitions, such as the School Girls competition, as I had no direct involvement with this. Special mention must go to Tanya Arathoon who I understand has run this competition for many years and successfully.  
So Where To in 2016!

The board spent the best part of a day post-season reviewing everything and I am pleased to advise that out of that meeting the board agreed that you will see greater levels of:

- communication
- transparency
- club involvement and
- synergy with its clubs, convenors and committees

I want our clubs to be better informed and I want them to have more investment in their competitions.

We want our representative players to have clear guidelines on selection policies, to be well coached, to be proud to represent SEHA and to succeed as a team and of course as individuals.

My role will pleasingly have a far greater emphasis on the "big picture" areas, which means I will get to devote significantly more time to the 4 points raised above, especially when liaising with our convenors, committees and clubs. Getting 1<sup>st</sup> hand feedback from clubs is essential to ensuring the success of our competitions.

On a personal note, I really enjoyed watching various competition matches throughout the year and I absolutely enjoyed my day at the women's grand finals. The atmosphere, the hockey and the weather, were all aligned to produce a memorable 1<sup>st</sup> SEHA Grand Final Day . The hockey was great and all matches were played in the right spirit - tough but fair.

I am looking forward to seeing many more matches next year along with getting out to see more of our representative sides in action.

In closing, I thank you for the privilege of representing you as Competitions Director in 2015 and my thanks to you all for making year 1 such a great success.

Finally, my personal thanks to my fellow board members for their hard work and support.

Danny O'Brien  
Competitions Director

## SEHA Junior Convenor Report

The inaugural season of Sydney East has been a busy one to say the least, across the junior competitions and representative teams with volunteers putting in an uncountable amount of hours in service of the future of hockey. The Junior Competitions continued to run and deliver a competition building the grassroots of hockey in the area; with the diversity of clubs playing Grand-Finals a positive sign of the growing strength in Sydney East. Meanwhile our representative teams enjoyed success in their respective State Championships with several making semi Finals and the U15 1 Boys returning home runner's up.

Unfortunately as it often is the case with the future of our great game, there is too few volunteers doing too much work ending the season tired and overworked. A situation that is increasingly becoming unsustainable for a minority sport such as ours. I want to challenge the wider hockey community to get involved in junior hockey. Why? Because it is the future of our sport! Without which, there will be no hockey! Whatever small part you can play, at your club or in the association, it will be a massive contribution to our sport. Whether it be as be as a coach, manager or administrator; or simply helping with one small thing throughout the season. **Every contribution is needed and valuable!**

### **Junior Competitions**

The Sydney East junior competition saw the renewed commitment of the area clubs to maintain the competition and continue to deliver a junior competition for the grassroots of the association. This year the competition saw teams from Bankstown, Glebe, Moorebank, St George, Sutherland, Sharks & UNSW enter 40 teams across U11s-U17s alongside a Carnival based U9s program. Grand-final day, the highlight of the year, saw some fantastic hockey, with tight matches throughout the age groups and a good number of junior umpires performing exceptionally well throughout the day. While there could be only one winner on the day, the skill, effort and fair play on display was a testament to all players.

Importantly, this competition could not run without the dedication and work of the executive and club delegates who gave their time throughout the year, in what is often a thankless job. They are an amazing group of people who continue to serve the hockey community and their clubs year after year. I would like to on behalf of the association and hockey community extend my thanks for their continued service.

*SEHA Committee: Anthony Roberts, Sue Morrison, Murray Kraa, Robyn Wiggins, David Wells*

*Club Delegates: Ray Veleski (B'Town), Karl Brooks & Kim Brooks (M'Bank), Clare Prideaux (Glebe), Michael Mecham (Sutherland), Mick McDonald (St George), John Dalla Bona (Sharks), Maria Bradley (UNSW).*

## **Junior Reps**

It is quite a task, creating something from scratch, add a constraint of little time and never being in such a position before and you have the experience of the Sydney East Junior Reps Committee in 2015. It is only through the hard work of this committee and our excellent managers and coaches that the season came together as it did. I would like to start by personally thanking Andrea Casteriano and Rebecca Shiels for their tireless work and support in this year of challenges, without both of these two ladies it would not have been possible.

In our inaugural season as SEHA representative teams, it was fantastic to see our players across all age groups representing us exceptionally both on and off the field. From our U18/2 Girls taking time out to play beach volleyball at State Championships, both our U15 Boys teams attending Laser tag together or our U13 Girls who created their own mascot (Squawky), it is clear that our players are making SEHA reps a great experience. On the field we had 3 teams make Semi-Finals with our U15/1 Boys runners up and both our U11 teams taking our Division 2 of the York/Kim Small Cup. This was only possible with the dedicated work of our coaches and managers, whose guidance and hard work in preparing the teams was astounding. On behalf of the association I wish to thank them all for their hard work and contributions in our first season. We are now looking to the 2016 season and hope to build upon our success both on and off the field.

Joshua Wiggins

**Junior Convenor**



## SEHA Women's Convenor Report 2015

On behalf of the SEHA Women's Competitions Committee, players and officials, the inaugural 2015 season contained four divisions in the women's competition proving that the SEHA Women's Competition is viably strong with clubs and teams.

The first year saw the committee work collaboratively to uphold the policies and procedures provided by the SEHA Directors and Working Party.

I wish to acknowledge the Working Party and the SEHA Directors in all their efforts in setting up SEHA so that the Women's Competition could run cohesively. I would also like to thank and acknowledge the dedicated people who put in time and commitment to be a member of the 2015 SEHA Committee – Jodie McIntosh, Anna Barton, Sue Brady, Tanya Arathoon, Briony Nilan and Alison Banks.

It is important mention that volunteers on the committee and from clubs work tirelessly to ensure teams officials and competitions run smoothly. It is with the assistance of these people that supports my position of Women's Convenor and I thank them.

Alex Lupton  
SEHA Women's Convenor

## SEHA Women's Competition Results

### Women's Competitions Awards

Major Club Champions	Dolphins
Minor Club Champions	Sharks
Highest Goalscorer	Kiah Hunter (Esquires 1)
Best and Fairest Premier	Louise Maraun (UNSW 1)
Best and Fairest 2 <sup>nd</sup> Grade	Hannah Goman (RSL2)
Best and Fairest 3 <sup>rd</sup> Grade	Olivia Edwards (Glebe 3)
Best and Fairest 4 <sup>th</sup> Grade	Victoria Stanford (Dolphins 4)

### Premier Grade Grand Final Result – Esquires defeated RSL 1 2-0

Grand Final Best & Fairest: Kiah Hunter (Esquires)

Umpires: Marilyn Brown and Alycia Amundson

RANK	TEAM	P	BYE	W	D	L	F	A	GD	POINTS
1	UNSW 1	14	4	12	1	1	52	9	43	37
2	Cronulla RSL 1	14	4	8	2	4	42	18	24	26
3	Esquires 1	14	4	8	2	4	46	24	22	26
4	Tartans 1	14	4	6	3	5	33	36	-3	21
5	Dolphins 1	14	4	4	3	7	21	32	-11	15
6	Easts 1	14	5	2	4	8	31	55	-24	10
7	Sutherland 1	14	4	1	1	12	10	61	-51	4

**2<sup>nd</sup> Grade Grand Final Result – Bosco 2 defeated Easts 2** **2-1**

Grand Final Best &amp; Fairest: Floor Verhoeven (Bosco 2)

Umpires: Alison Banks and Jess Bingley

RANK	TEAM	P	BYE	W	D	L	F	A	GD	POINTS
<b>1</b>	<b>Easts 2</b>	15	3	11	3	1	38	11	27	<b>36</b>
<b>2</b>	<b>Sharks 2</b>	15	3	9	3	3	41	15	26	<b>30</b>
<b>3</b>	<b>Bosco 2</b>	15	3	9	2	4	46	24	22	<b>29</b>
<b>4</b>	<b>POHOGS 2</b>	15	3	6	5	4	32	24	8	<b>23</b>
<b>5</b>	<b>UNSW 2</b>	15	3	4	3	8	21	30	-9	<b>15</b>
<b>6</b>	<b>Glebe DHC 2</b>	15	3	4	3	8	18	29	-11	<b>15</b>
<b>7</b>	<b>Cronulla RSL 2</b>	15	3	3	2	10	20	42	-22	<b>11</b>
<b>8</b>	<b>Sutherland 2</b>	15	3	2	3	10	12	53	-41	<b>9</b>

**3<sup>rd</sup> Grade Grand Final Result – Bentstix 3 defeated Dolphins 3** **3-2**

Grand Final Best &amp; Fairest: Donna Edwards (Bentstix 3)

Umpires: Lyndsey Freeman and Alex Withey

RANK	TEAM	P	BYE	W	D	L	F	A	GD	POINTS
<b>1</b>	<b>Dolphins 3</b>	15	3	8	5	2	30	16	14	<b>29</b>
<b>2</b>	<b>Bentstix 3</b>	15	3	8	5	2	25	16	9	<b>29</b>
<b>3</b>	<b>Bosco 3</b>	15	3	8	3	4	29	17	12	<b>27</b>
<b>4</b>	<b>St George 3</b>	15	3	7	4	4	22	15	7	<b>25</b>
<b>5</b>	<b>Sutherland 3</b>	15	3	7	2	6	30	18	12	<b>23</b>
<b>6</b>	<b>Glebe 3</b>	15	3	6	4	5	17	26	-9	<b><u>16</u></b>
<b>7</b>	<b>Easts 3</b>	15	3	2	5	8	16	28	-12	<b><u>10</u></b>
<b>8</b>	<b>UNSW 3</b>	15	3	0	0	15	3	44	-41	<b>0</b>

**4<sup>th</sup> Grade Grand Final Result – Sharks 4 defeated Dolphins 4** **2-1**

Grand Final Best &amp; Fairest : Vanessa Allen (Sharks 4)

Umpires: Debbie Dodd and Jess White

RANK	TEAM	P	BYE	W	D	L	F	A	GD	POINTS
<b>1</b>	<b>Dolphins 4</b>	16	3	11	3	2	37	11	26	<b>36</b>
<b>2</b>	<b>Sharks 4</b>	15	2	8	3	4	25	14	11	<b>27</b>
<b>3</b>	<b>Bankstown 4</b>	16	2	7	3	6	37	16	21	<b>24</b>
<b>4</b>	<b>Cronulla RSL 4</b>	16	3	7	4	5	24	15	9	<b><u>22</u></b>
<b>5</b>	<b>UNSW 4</b>	16	3	6	4	6	24	19	5	<b>22</b>
<b>6</b>	<b>Bentstix 4</b>	16	2	5	7	4	23	20	3	<b>22</b>
<b>7</b>	<b>Easts 4</b>	16	2	5	5	6	24	29	-5	<b><u>19</u></b>
<b>8</b>	<b>Glebe DHC 4</b>	16	2	3	6	7	13	27	-14	<b>12</b>
<b>9</b>	<b>Sutherland 4</b>	15	3	1	1	13	14	70	-56	<b><u>-2</u></b>

## SEHA Masters Convenor - 2015 Report

**Summary:** overall 2015 was a successful season. As we are all aware, it was the inaugural season of Sydney East Hockey Association (SEHA) and the transition, from the Womens' Masters perspective, was extremely seamless and smooth encompassing the previous 4 Eastern Districts and Canterbury masters teams. All 4 again entered in the SWHL Masters competition (divisions 1, 3x2 & 4). 3 teams got into the finals with **SEHA1-ED1** losing the Division1 grand final in extra time, **SEHA2-ED2** losing the Division 2 final and **SEHA3-Canterbury** losing the Division 3 final. All 4 teams participated in the NSW Masters State Champs, **SEHA1** were placed 5<sup>th</sup> (out of 14) in Over 35s division 1; **SEHA2** were placed 6<sup>th</sup> in Over 35s division 3; **SEHA3** were placed 5<sup>th</sup> in Over 35s division 4; and **SEHA4** were placed 8<sup>th</sup> in Over 45s division 2.

### SWHL Competition

**SEHA-ED1** was 1<sup>st</sup> or 2<sup>nd</sup> in division 1 for the majority of the season but eventually finished 2<sup>nd</sup>. They won their major semi taking them directly to the grand final 2 weeks later where they lost 2-1 in golden goal extra time in a very close match against Ryde-Eastwood. Thanks to manager, Jude Kirby for her hard work throughout 2015.

**SEHA-ED2** finished 3<sup>rd</sup> in division 2 which was a great result as they had been promoted up from division 3. They drew their minor semi in the last minute and went through to the final as the highest placed team but then lost the final 2-0 against a strong Parramatta. Thanks to player-manager, Cathey Eke and interchange manager, Marilyn Brown.

**SEHA-Canterbury** finished 3<sup>rd</sup> in division 3 (only missing out on 2<sup>nd</sup> place due to goal difference. Thanks to the numerous players who assisted with the manager responsibilities.

**SEHA-ED3** finished 6<sup>th</sup> in division 3. They were unexpectedly promoted up from division 4 where they were outplayed but although their results were disappointing they persevered throughout the season. Thanks to the player-manager, Amanda Sue and their player-coach Kath Calokerinos.

**NSW State Champs (full-state)** hosted by Bathurst Association.

4 teams entered – results in summary above.

Good results despite all 4 teams suffering from late player withdrawals primarily due to injury and high unavailability for the Thursday. With the exception of SEHA1, the other 3 teams only had a max of 12 or 13 players across the 4 days. It was also the 30<sup>th</sup> Anniversary of Womens Masters Hockey which was celebrated throughout the weekend. Congratulations to all the players and officials who participated.

### NSW State Teams competed in 2015 Masters National Championships at Brisbane

The following 10 SEHA masters players were selected into various NSW Masters sides:

- NSW35 (Bronze): Karen Bowden, Sheridan Gorman, Georgina Gunner, Amelia Smith
- NSW40 (Bronze): Leanne Croft, Sarah Dredge, Monique Lester
- NSW45 (Bronze): Tracy Bradford.
- NSW50 (Silver): Sharon Brown, Kirsty McIntosh

**Australian Masters selection:** Further congratulations are due to the following SEHA players who were all selected to represent Australia participating in the Masters World Cup to be held in Canberra March/April 2016:

- HAWM35: Karen Bowden, Sheridan Gorman (shadows: Sarah Dredge, Georgina Gunner)
- HAWM50: Tracy Bradford.
- HAWM55: Sharon Brown, Kirsty McIntosh

Last but not least, a big thank you to our **umpires**, Marilyn Brown, Craig Miller and Jo Merrick and also Trent Wilde (State Champs).

We look forward to growing SEHA Womens' Masters in 2016.

*Thank you, Carolyn Davies*

*(SEHA Masters Convenor 2015)*



## SCHOOLGIRLS COMPTITION REPORT 2015

This year's competition had 44 teams entered from 10 schools.

	ED 1	ED 2/1	ED 2/2	ED3	ED 4/1	ED 4/2	ED5	
<b>1</b>	Ravenswood 1	Ravenswood 2	KRB 1	Ravenswood 3	Ravenswood 4	St Caths 3	Ravenswood 5	
<b>2</b>	Wenona 1	Wenona 2	Wenona 3	Wenona 4	Ascham 6	Wenona 5	Wenona 6	
<b>3</b>	Kambala 1	Kambala 2	SVC 1	Kambala 3	Kambala 4	Ascham 8	Kambala 5	
<b>4</b>	Ascham 1	Ascham 2	Ascham 3	Ascham 4	Ascham 5	Ascham 7	Danebank J1	
<b>5</b>	Danebank 1	Danebank 2	St Caths 2	Danebank 3	Danebank 4	SVC 3	Santa 5	
<b>6</b>	Santa 1	St Caths 1	Santa 2	SVC 2	Santa 3	Santa 4	Ascham 9	
<b>7</b>	Loreto 1			Loreto 1				
	<b>7</b>	<b>6</b>	<b>6</b>	<b>7</b>	<b>6</b>	<b>6</b>	<b>6</b>	<b>44</b>

We were pleased to welcome to the competition Loreto and Kincoppal Rose Bay.

Congratulations to all the winners and runners up this season:

Grade 1        Ravenswood 1  
(Runners Up    Loreto 1)

Grade 2/1     St Caths 1  
(Runners Up    Ascham 2)

Grade 2/2     KRB 1  
(Runners Up    Ascham 3)

Grade 3        Ascham 4  
(Runners Up    Ravenswod 3)

Grade 4/1     Santa 3  
(Runners Up    Ascham 5)

Grade 4/2     Ascham 8  
(Runners Up    Santa 4)

Grade 5        Wenona 6  
(Runners Up    Kambala 5)

Thanks to our convenors and umpires and to all the coaches and school co-ordinators for their work this season.

Tanya Arathoon

Schoolgirls Committee 2015



## 2015 Representative Field Teams

### Open Men

Oliver	Flack
Ryan	Proctor
Aleks	Manou
Luke	Noblett
Daniel	Morrison
Jack	Noblett
Nathan	Bourke
Mitchell	Tudor
Mitchell	Scotcher
Graham	Nes
Nathan	Gilbert
William	Graf
Marlon	Johnston
Nic	Candido
Jack	Elliott
BJ	Bruton

Coach: Bob Proctor

Manager: George Manou

Final Position: 5<sup>th</sup> Div 1

### Open Women

Caroline	Baeurle
Nicole	Barnes
Jocelyn	Bartram
Jessica	Bingley
Alysha	Borg
Samantha	Danckert
Litiana	Field
Aisling	Klimoski
Caitlin	Lawrence
Eliza	McPhee
Kaitlin	Nobbs
Stephanie	Perkins
Tori	Scanlon
Georgina	Mallon
Esther	Hotham
Jess	Sault

Coach: Lee Capes

Manager: Alex Lupton

Final Position: 6<sup>th</sup> Div 1

### U18/1 Boys

Alex Melville
Jack Noblett
Tom Vastani
Xavier Dao
Kris Manou
Sam Alexander-Prideaux
Billy Graf
Jayden Forday
Liam Jepson
Lachlann Oag
Matthew Najdzion
Matthew Bannerman
Josef Richmond
Angus Baird

Coach: George Manou

Manager: Ann Noblett

Final Position: 9<sup>th</sup> Div 1

### U18/1 Girls

Jacinta Wong
Gabrielle Lee
Emily Wright
Anna Moraitakis
Julia Bradley
Litiana Field
Lee Davis
Georgina Mallon
Emma Grant
Amy Molloy
Miriam Pritchard
Catherine Barlin
Aisling Klimoski
Jessica Stewart

Coach: Dean Morrow

Manager: Maria Bradley/Fiona Pak Poy

Final Position: 7<sup>th</sup> Div 1

### U18/2 Boys

Matthew Wren
Chad Martin
Ian Pedersen-Clark
Aodhan Hannigan
Brayden Morrow
Ernesto Lazcano
Kristiane-Connor Skoulogenis
Zac Chong
Remy Mitchell-James
Justin Ward
Jarrold Scanlon

Coach: Trent Hall

Manager: Deanna Morrow

Final Position: 10<sup>th</sup> Div 2

### U18/2 Girls

Kayla DeOliveira
Emma Neal
Genieve Mukkati
Casey Gibbs
Emma Choi
Olivia Ferrer
Jessica Attenborough
Grace Dallen
Celeste Dao
Alanah Southan
Erin Machin Hunt
Katherine Sloane
Kloe Mannering
Anna Huang

Coach: Alan Charlton

Manager: Melinda Mannering

Final Position: 7<sup>th</sup> Div 3

### U15/1 Boys

Jackson Howe
Rodrigo Pedraza Luna
Vyas Mukkati
Rashil Jetley
Thomas O'Reilly
Tim Pritchard
Ronan Shiels
Angus Baird
Hugh Dallen
Patrick Vastani
Miles Davis
Ian Pedersen-Clark
Jonah Riley
Connor Welch

Coach: Alex Lupton

Manager: Irene Riley

Final Position: 2<sup>nd</sup> Div 1

### U15/1 Girls

Tegan Neowhouse
Sophie Ferrer
Julia Bradley
Bridget Kelly
Caitlin Wasserman
Emily Griffin
Darcy Uruqhart
Vienna Williams
Ellie Burnett
Isabella Shannon
Skye Mahony
Susie Douglas
Madeline Scott
Samantha Backler

Coach: Peter Bradley/Benjamin Down

Manager: Maria Bradley

Final Position: 7<sup>th</sup> Div 1

### U15/2 Boys

Oliver Brownbill
Hamza Akhtar
Patrick Newman
Ashwin Aggarwal
Lex Martin
Ahmed Ali
Tom Mowat
Jason Ius
Kevin Wu
Wilson Wu
Gabriel Jessop-Smith
Lewis Francis
Bradon Holland
Simon Shilson-Josling

Coach: Josh Wiggins

Manager: Arun Aggarwal

Final Position: 6<sup>th</sup> Div 2

### U15/2 Girls

Jordie Oeding
Lulu Anderson
Kaytee Reynolds
Laura Hooper
Charlie Pepper
Tallulah Fitzroy
Tahlia Morrow
Daisy Kirton
Harriet Psaltis
Indigo Warner
Emma Alexander-Prideaux
Lilly Allen
Olivia Cain
Evelyn Balliene

Coach: Corrina Baldock

Manager: Elyssa Molloy

Final Position: 3<sup>rd</sup> or 4<sup>th</sup> Div 3

### U13 Boys

Jack Ward
Karl Smith
Martin Pedersen-Clark
Calam Baird
Riley Nilan
Levi van Schie
Hal Norved
Cameron Jones
Oliver Argent
Sulaiman Mehmood
Bailey Scanlon
Lars Frissel-Thomas
Yuri Farrawell
Matthew West

Coach: Briony Nilan

Manager: Fiona Baird

Final Position: 10<sup>th</sup> Div 1

### U13/2 Girls

Jasmine Howe
Scarlett Thuell
Gemma Tameel
Annabel Randall
Olivia Payne
Lauren Furner
Tegan Howe
Alexia Lorenzarto
Abby Foster
Madeline Feine
Samantha Iglesias
Mimi Kind
Nina Lane
Lydia Najdzion

Coach: Kate Alexander

Manager: Wendy Machin-Hunt

Final Position: 5<sup>th</sup> Div 3

### U13/1 Girls

Megan Miranda
Emma Alexander-Prideaux
Layla Riley
Olivia Cain
Prudie Dallen
Bianca Smith
Chelsea Da Silva
Alexa Gwyn
Talia Morrow
Annabel Smith
Asha Machin Hunt
Sarah Brine
Olive Curry
Destiny Peris

Coach: Clare Prideaux

Manager: Alison Cummins

Final Position: 4<sup>th</sup> Div 1

### U11 Boys

Labib Khan
Henry Tyree
Oskar Smith
Rian Sutri
Toby Mallon
Archie Dallen
Hugh Foster
William Brine
Lachlan Muffett
Oscar Frissel-Thomas
Talal Naboulsi
Morgan Veleski
Kai Jones
Charlie Moore

Coach: Jennifer Avery

Manager: John Muffett

Final Position (Tamworth): 1<sup>st</sup> Div 2



## U11 Girls

Sabah Naboulsi
Laura Wood
Sophie Jones
Abbey Roberts
Allegra Symonds
Dakota Thuell
Claire McDonald
Lillian Pritchard
Annie Millar
Georgina Randall
Sienna Da Silva
Juliette Triccas
Charlotte Gibbs
Rosie Ginter
Fleur Helmantel
Cate Heath

Coach: Kath Calokerinos

Manager: Sharon McDonald

Final Position (Tamworth): 1<sup>st</sup> Div 2

## Women's Masters 1

Sonya	NICHOLL
Carolyn	DAVIES ( <b>GK</b> )
Leanne	CROFT
Esther	GRANT
Kirsty	MCINTOSH
Lisa	ROACH
Kylie	NORRIS
Annette	SMITH
Sarah	DREDGE
Amelia	SMITH
Anne	HOWARD
Georgina	GUNNER
Sheridan	GORMAN
Karen	BOWDEN
Cindy	GOODRIDGE

Manager: Jude Kirby

Umpire: Marilyn Brown

Final Position: 5th (0'35 Div 1)

## Women's Masters 2

Amanda	BOCK
Sue	ROBERTS
Chaelene	PHILLIPS
Cathey	EKE
Cath	HARLAND
Liz	IRVIN
Monique	LESTER
Jackie	DIXON
Sharon	KEENA
Angela	LANCE ( <b>GK</b> )
Debbie	DODD
Anne	REDMAN
Kate	KELLY

Manager: Cathey Eke

Umpire: Trent Wilde

Final Position: 6<sup>th</sup> (0'35 Div 3)

## Women's Masters 3

Jeanette Churchill
Judy Jones
Julie Foreman
Sue Brady
Carol Ann Perry
Marina Laverty
Robbie Boyle
Krys Dempster
Lorelle Byers
Jill Parkin
Karen Morris

Coach: Not provided

Manager: Not provided

Final Position: 5th (0'35 Div 4)

## Women's Masters 4

Sue	JAMIESON
Lorraine	BULL
Vivienne	BATH
Caryn	MAXWELL
Lee- Anne	BEST
Beth	SYMONDS
Patricia	MCCABE
Janet	BLACK
Amanda	SUE
Kathy	CALOKERINOS
Jo	MERRICK
Sharon	BROWN
Sharon	ANDERSEN

Manager: Joey Falla

Umpire: Jo Merrick / Janet Black

Final Position: 8<sup>th</sup> (0'45 Div 2)

---

# SEHA OPEN MEN'S REPORT

---

## Saturday 6<sup>th</sup> June

SEHA 2 def Grafton 1

SEHA 1 drew Newcastle 1

SEHA 2 drew Central Coast 2

## Sunday 7th June

SEHA 4 def Northern Sydney and Beaches 0

SEHA 3 drew Metro South West 3

## Sunday 8th June

Ranking match 5 v 5

SEHA 2 def Illawarra 0

Although we did not lose match with 3 wins and 3 draws, SEHA finished 5<sup>th</sup> in a division of 12.

## 2015 NSW WARATAHS AHL SQUAD

BJ Bruton

Luke Noblett

Jack Elliott

Ryan Proctor

## 2016 NSW U21 MEN'S SQUAD

Oliver Flack

Ryan Proctor

Mitchell Scotcher

Cheers,

George Manou

# SEHA Open Women report 2015

Monday, 8 June 2015 5:17 pm

The SEHA open women's team competed at the state championships at Narellan Hockey Centre. With this being the inaugural year for SEHA our goal was to maintain division 1 standing and make the semi finals.

Our results were as follows:

## **Game 1**

Opposition: Tamworth

Result: 2-0 win

Goal scorers: C.Lawrence; K.Nobbs

We had to wear alternate (white) socks.

## **Game 2**

Opposition: North West Sydney

Result: 3-1 loss

Goal scorers: K.Nobbs

During this game Stephanie Perkins was injured with a raised ball straight on to the knee cap. An ambulance was called and she was transported to Campbelltown hospital for diagnosis. She had an X-ray which indicated no fracture but impact bruising. She was given a medical clearance and played the rest of the tournament.

## **Game 3**

Opposition: Nepean

Result: 0-0 draw

Goal scorers: nil

We had to wear alternate (white) socks.

## **Game 4**

Opposition: Met South West 2

Result: 7-0 win

Goal scorers: E.Hotham (2); E.McPhee; A.Borg; C.Lawrence (2); S.Danckert

## **Game 5 - play off 5v6**

Opposition: North Sydney and Beaches

Result: 3-0 loss

Goal scorers: nil

We turned our shirts inside out s our colours were too close to the opposition.

Our final placing for the championship was sixth.

I would like to thank all the players for impeccable behaviour and thank Lee Capes for her leadership coaching the SEHA Open Women's team for 2015. This was an enjoyable experience and I hope the girls learnt from this representative opportunity.

I would also like to thank the parents (Mrs Bingley and Mrs Danckert) who provided their services in judging the games with a NSW Technical Official.

I would like to thank Danny O'Brien (SEHA Competitions Director) for congratulating the girls on their selection and wishing them good luck for the championship, as well Briony Nilan (SEHA President) for also taking the time out to judge a game and watch the ladies play. The support from the Directors was greatly received and well acknowledged by the players.

I would like to propose some recommendations for SEHA to consider:

1. A generic first aid kit also be supplied for managers to ensure basic needs are being met with minor scratches and grazes.
2. A blood uniform also be given to managers- this would include shorts/skorts, blue socks, white socks.
3. Due to having to use white socks for two games, another suggestion could be that SEHA alternate socks could be orange with blue tops.
4. Senior representative teams have a tray of balls, markers and bibs to facilitate trainings.

Regards

Alex Lupton

SEHA Open Women's Manager 2015

## **SEHA U18(2) Girls Report – U18 State Championships @ Newcastle**

On Friday 8<sup>th</sup> May 2015 the U18 (2) SEHA girls met at the fields at Newcastle to start their weekend of hockey for the 2015 U18 Girls State Championships. This Championship was a pink event for Breast Cancer so I decided that everything we had would be pink. We purchased drink bottles from the BCNA website, all our lollies were red/pink, we had strawberries and red grapes at half time, the girls had pink ribbon in their hair, pink zinc on their faces and I organised a pink morning tea on Sunday for Mother's Day. I also gave the girls a pink face towel with the BCNA doll on it with their names as a gift from me to remember their experience at State Champs.

Our first game was at 10am on Friday against Newcastle 2. The girls seemed to get on really well on and off the field however we went down 2-0.

Our second game on Friday was at 4pm and we played Grafton. The Grafton team was a very competitive one and our girls fought really hard to stay in the match, but we unfortunately lost 4-0. After this game I organised a team dinner at one of the local pubs which was just up the road from the Executive Inn where a few of our team were staying. After dinner I walked the girls back to the Executive Inn and they went up to one of the girl's rooms and watched a movie together.

Our third game on Saturday was at 2pm against Dubbo. As we had such a late start on Saturday I arrange for a team bonding exercise at Nobbys beach. The girls played a little beach volley ball, went for a beach walk and an early lunch before it was time to get focused for the game. Again the Dubbo team was very competitive and I think caught our girls off guard a little, or I made them too relaxed, as our game seemed to drop off and we went down 4-0.

Our fourth game saw us take on another Sydney region, being Sydney South 2. The girls found a little extra spark and played some of their best hockey in this game. At half time we were down 1-0 but the girls went out in the second half and fought hard and this payed off with a goal to Grace Dallen. It was almost at the end of the game and a penalty stroke was awarded to us and Grace stepped forward to take the stroke. Grace took the shot and it went wide, however she had not waited for the umpire to blow the whistle so the stroke had to be played again and this time she did not miss. We won this game 2-1 and the girls were so excited.

Also the support from the parents from the sideline was amazing, we saw the Mexican wave and the "SEEEEEHAAAA" chant was born spurring the girls on.

Our fifth and final game on Sunday was at 11am against Grafton 2, this was 4<sup>th</sup> pool A against 4<sup>th</sup> pool B playing for 7<sup>th</sup> and 8<sup>th</sup> in Div 3. The girls again continued from the night before and played some good hockey, however the score was 0-0. As we were in pool A we have been noted as finishing 7<sup>th</sup> in Division 3.

Alan and I are so proud of the girls on and off the field and every single one of them is a credit to their parents. They are all gorgeous girls and I hope to catch up with each and every one of them at a hockey field in the future.

Melinda Mannering  
Team Manager

# U15 SEHA BOYS 2015 report

Sunday, 17 May 2015 8:38 pm

The Moorebank carnival started the competitive part of our campaign. With a tough draw the team was in the process of working on two structures, new teammates as well as being asked to be able to be a flexible player by being competent in two lines.

The boys played:

North west- result SEHA win 1-0

Central Coast- result SEHA win 1-0

Goulburn- result SEHA win 4-0

Msw- result SEHA win 1-0

Newcastle - result SEHA lost 2-0

Southern Sydney- result SEHA win 2-0

A runner up result to learn from and move forward at the state championships in Grafton next week.

Grafton state championships:

On arrival at Grafton we were informed by Hockey NSW of draw changes due to the wet weather they had encountered- now playing 20min halves, 3 min half time due to the closure of the grass fields. This meant Friday and Saturday games were 1pm and 5.10pm.

Game 1 v Manning Valley

A great start to the tournament with fundamental ball movement happening all over the field. It was this ball movement and secure positioning that led to our four field goals. Ian Pederson-Clarke scoring two goals, Vyas Mukkat scoring one and Miles Davis scoring one. This game was to set the scene for the style of play that I wanted the team to play so we could build each game. I couldn't have been any happier with the start.

Game 2 v North West

After meeting North West at the Moorebank carnival we had already gained an insight into their play and play makers. As a team we worked hard both in attack and defence. We gained a penalty stroke in the first half, which was converted by Angus Baird. The team continued with their unpenetrable defence in the second half. Great build up play on the right hand side of the field led to a superb goal scored by Ian Pederson-Clarke.

Game 3 v Far North Coast

After such a tough game the night before I was concerned about how leg weary the team may be. We struggled to maintain our structure but we're persistent in trying to gain possession and attack. We scored two goals through Angus Baird and Ronan Shiels to secure our victory against FNC.

Game 4 v Tamworth

The boys were fatigued waiting until five for another game, this time against Tamworth. This led to scratchy skills and a lack of ill discipline in providing early ball movement. We struggled to maintain possession in the first half for a specific period of time which led to Tamworth converting a field goal due to our defensive loose marking. Thankfully the boys improved with their ball movement and patience in the second half leading to Tim Pritchard scoring. The end result being 1-1 draw.

During this game Rashil Jetley was given a green card and the boys transitioned well to cope and cover all positions.

Game 5 semi final v Newcastle

The boys had previously lost to Newcastle at the Moorebank carnival so really made it known that they wanted to win. The 7.30 am start time though proved to be tough. Tough for warm up purposes as the Grafton hockey centre did not pen their doors to players until 7.05 am and would not allow players to take the field due to watering until 7.20am. Ridiculous to schedule a game so early but not allow the facilities to be open long enough for an effective warm up to take place.

The game itself was one which was at a high pace, with the boys playing a perfectly structured game, linking between the lines beautifully. Both teams had goal scoring opportunities. We had two goals disallowed so when the game resulted in a draw, we automatically qualified for the final because we finished on top of the table.

Patrick Vastani and received a green card for making a statement, however, the team adjusted and coped well during his two minute rest.

Game 6 final v Met South West

MSW hit us at a frightful pace that the boys took a step back rather than a step forward and we unfortunately started playing a chasing game. With loose marking and I hate to say a well played and strong game by MSW we unfortunately lost 3-0.

I would like to thank SEHA for the opportunity provided to enable me to coach this side and I sincerely hope that the boys gained something from the experience. I believe that SEHA have a wealth of talent in these young men that need to be developed further to maintain a successful hockey path and I wish each of them every success.

A special mention should also go out to Irene Reilly who took on the role and responsibility of managing the SEHA U15 boys number one team. She did a fantastic job and really looked after the welfare of all the boys and assisted me in timing the game when the clock didn't work so I could run the substitutions. If she wishes to take on another managerial role I would happily support her application.

Regards Alex Lupton

## **SEHA U13 Boys Team Report**

Prior to attending the State Championships the team had 4 training sessions, 1 practice match and 1 carnival.

The carnival was held at Moorebank, the weekend prior to the state championships. This a good chance for the players to get more comfortable playing together, working out the best player combinations, practice our structure, playing players in different positions and to give a number of people the opportunity to be a team leader.

### **Moorebank Carnival**

Game 1 v Central Coast (result 0-0 Draw)

Game 2 v Newcastle (result 1-0 Loss)

Game 3 v Metro South West (result 0-0 Draw)

Game 4 v ACT (result 1-0 Loss)

Game 5 v Illawarra (result 2-1 Loss)

Game 6 v North West Sydney (result 1-0 Loss)

At the conclusion of the Moorebank Carnival, the player voted on the team leaders for the state championships. Levi Van Schie was named Captain, Calam Baird named Defensive Vice Captain and Riley Nilan named Attacking Vice Captain.

### **State Championships, 10-12 July 2015, Taree**

#### **Pool A Division 1**

The NSW U13 Boys State Championships was held in Taree on 10-12 July. The SEHA team was in Division 1, Pool A.

#### **State Championships**

Game 1 v North West Sydney 1 (result 4-0 loss )

Game 2 v Grafton 1 (result 4-0 loss)

Game 3 v Metro South West 1 (result 4-0 loss)

Game 4 v Central Coast 1 (result 1-0 loss)

Game 5 v Manning Valley & District 1 (result 1-1 draw)

We came 5<sup>th</sup> in our pool and played off for 9<sup>th</sup>/10<sup>th</sup> in Division 1. Even though we had a draw against the home association in the classification game, this will result in the team being relegated to Division 2.

This division was very challenging for the team but I had trust in them that they would not give up and learn from this experience. By the end of the championship you could see it was evident that the team had improved in team play and structure. Due to the composition of the team a couple of players had to play out of their preferred position. So it was pleasing to see these players not hesitating to give it a go and do their best.

I would like to give a big thank you to Fiona Baird for being a great team manager. Thank you to all the families and friends for cheering the team on and providing positive encouragement. A final thank you to all the parents who assisted with tech bench duty. It was nice to hear feedback from the parents who helped with tech bench duty, that they could recognise that being a coach and manager of this age group is not easy and that a lot of work and effort is put in.

Congratulations to Calam Baird, Sulaiman Mehmood and Riley Nilan on your NSW selections. I hope you all enjoy your experience in Darwin.

Regards

Briony Nilan

SEHA U13 Boys Coach

## **SEHA Junior Representative Under13 Girls 2015 Final Report**

The aim of the season was to develop the girls' fitness, playing skills and encourage a sense of good sportsmanship, teamwork, friendship and a love of hockey. We also aimed to maintain a position in Division One for SEHA.

As the managers in the inaugural season of SEHA Under 13 Girls squads for 2015, please find below our report, and the final squad lists are attached for your reference.

### **ADMIN**

We distributed an email at the start of the year, with a welcome note, and general information about dates for the season. Communication with families was generally via email.

There were some issues with ensuring all girls were registered with Hockey NSW, as some were only playing schoolgirls hockey. If SEHA were to continue allowing schoolgirls to trial (and we think it should be encouraged), then it would be helpful to make parents aware of this requirement (and expense) early in the season.

### **Uniforms**

The new SEHA uniforms were popular, and the girls looked great. Our only feedback would be to consider increasing the ratio of larger sized shirts in the standard set. The other thing to consider is that there was no alternate strip for State Championships, which require numbered shirts. It wasn't a problem this year, but if planning for next few years may be worth consideration.

### **Equipment**

We were given a cage of balls each for training, but hoped for future seasons the set might include training vests and cones to optimise the options for drills. We were able to use our own gear this season, but the association may want to think about ordering a mid sized team bag, to store basic equipment/simple first aid kit/team lollies etc., which can then keep the shirts in ordered storage in the off season.

### **Umpires**

We were fortunate to have access to umpires within the teams, and our club networks. We thank Matthew Tnadjion (junior), Chris Thuell (parent) and Riley Nilan (junior) for their efforts in 2015. Our suggestion though for 2016 is to include an umpiring levy in the general fees, as our experience is that collecting monies from parents can be difficult, and it usually leaves managers short, and can result in inconsistent payments to umpires.

### **Travel arrangements**

The teams travelled independently to the State Championships this year. While this certainly made a difference in fees for families, and in the responsibilities of coaches and managers, the feedback from parents and girls was that they preferred the idea of travelling in the bus and staying at "the team hotel" together.

### **Selection policy**

These teams had some fairly well documented issues in filling the squads with players of representative standard, as well as then in being flexible enough to revise places in squads based on performance and development during the representative season within the current policies. We understand that SEHA is considering these issues and our coaches are happy to provide any feedback you think helpful during that process.

### **Training**

We ran our training sessions as one squad, and tried to maintain consistency with Sunday morning sessions at Cintra (bar one last minute additional session at Bankstown). There were a few glitches with the booking system, but otherwise training went well. In all we ran 6 x 2hr sessions during the season. We also offered optional fitness sessions, running The Bay on a Thursday evening, but unfortunately had poor attendance and so we discontinued them after a few weeks.



In scheduling training, fitness and carnivals we attempted to find the right balance between having the girls well prepared for State Championships, but not being onerous or too demanding on families. Parent feedback was good, and the feature of all communication at the end of the season was an acknowledgement from parents about the high standard of coaching, training and skill development their daughters received.

## **CARNIVAL PARTICIPATION**

We entered the teams in the Canberra Carnival in June (5th-8th) and Moorebank (28th June) and used them as development sessions for the girls. The main event for the teams was the State Championships, held in Tamworth from 2nd to 5th July 2015.

## **Results**

The results at these tournaments were  
Canberra-both teams in Division One, finishing in bottom 2 positions.  
Moorebank-Division One finishing last, Division Two finishing 4<sup>th</sup>.

### State Championships

SEHA 1 def. by Lithgow in SF 2-0. Lithgow went on to win the tournament 5-1 against Northern Beaches. This leaves them ranked equal 3rd, or more likely 4th as the team finished second in the pool. **The result maintains a position for SEHA in Division One.**

SEHA 2 drew with Grafton 2 nil all, finishing either 5th or 6th in Division 3. This has them finishing either 27th or 28th, and **remaining in Division 3 for 2016.**

SEHA had 4 girls selected for State Squad consideration.

Chelsea da Silva (St George/striker)

Jasmine Howe (Glebe/GK)

Megan Miranda (Briars/GK)

Destiny Peris (Glebe/striker), who then was selected for NSW Blues squad.

## **Injuries and Incidents**

Apart from some minor knocks, the season was injury free.

The only incidental note may be consideration of the Associations policy on social media, after some minor occurrences during the season. Our understanding is that players/families/Associations/Hockey NSW use Twitter/Instagram/Facebook as a means of communication, and would think that the current code of conduct would be sufficient to address anything deemed inappropriate by players or officials during the season. Our view is that really a common sense approach should be used, and that any specific policy making in this area is fraught with problems.

## **CONCLUSION**

We ran the squads as a cohesive unit, trained together and we think this had a number of advantages in terms of skill development, budget and a sense of teamwork for all of the girls and families. The feedback from parents and girls throughout the season was overwhelmingly positive, and the results achieved by the girls and coaches were impressive, and beyond any expectations at the start of the year. All indicated they would return to SEHA for next season, and if not returning it was for reasons outside of hockey.

Thank you for your support, and interest in our teams over the season. Your efforts in this inaugural season were enormous, and appreciated, and allowed all 27 girls to have a significant learning experience, develop their hockey and most importantly form new friendships and get SEHA off to a positive start.

Wendy Machin and Allison Cummins

## U11 News Report – Tamworth 26-28 June 2015



### Sydney East Hockey Association

**Congratulations SEHA u11s Boys and Girls for achieving a clean sweep at Tamworth on the weekend taking out Division 2:**

- SEHA U11 Boys – Michael York Cup
- SEHA U11 Girls – Kim Small Shield

The teams got a great write up in the local newspaper – see [newslink](#)

The 3 day round robin tournament format has teams in Pool A and Pool B. Then on the final day the top four teams across the both pools play a round robin for the title.

#### **The Team – SEHA u11 Girls**

Coach – Kathy Calokerinos  
Manager – Sharon McDonald  
Umpire – Nathan McDonald

Sabah Naboulsi (Vice Captain Defence)  
Laura Wood  
Sophie Jones  
Abbey Roberts  
Allegra Symonds  
Dakota Thuell  
Claire McDonald (Captain)  
Lillian (Billy) Pritchard  
Annie Millar  
Georgina Randall  
Sienna Da Silva  
Juliette Triccas  
Charlotte Gibbs  
Rosie Ginter (Vice Captain Attack)

#### **OUT:**

Fleur Helmantel  
Cate Heath



#### **The Team – SEHA u11 Boys**

Coach – Jenny Avery  
Manager – John Muffett

Labib Khan  
Henry Tyree  
Oskar Smith  
Rian Sutri  
Toby Mallon  
Archie Dallen  
Hugh Foster  
William Brine  
Lachlan Muffett  
Oscar Frissel-Thomas  
Tala Naboulsi  
Morgan Veleski  
Kai Jones  
OUT:  
Charlie Moore



## U11 News Report – Tamworth 26-28 June 2015



### Sydney East Hockey Association



The Michael York Cup



The Kim Small Shield



Most Valuable Player – u11B

Henry Tyree



Most Valuable Player – u11G

Claire McDonald

**A huge thank you to the coaches managers and parent crew and especially the young players who did us proud.**

## SEHA Under 11 Boys

The Under 11 Boys had a very successful inaugural season, out of the 3 tournaments, Lithgow, Moorebank and the Michael York Cup in Tamworth, that we attended, we had 2 runners up placings and we won the Michael York Cup B division. At all tournaments that we played we only lost 2 games. At one point we had more draws than wins but as we progressed to Tamworth we worked on creating more goal scoring opportunities and working better as a team to win games.

14 boys turned up on the first trial day and showed a keen determined attitude which they carried with them for the entire season. The boys ability range was varied as was their ages, with our youngest player only 8 years old! The age range should hold the team in good stead for next year as some boys will move to under 13's but we will have a strong group left that have already experienced reps.

There was an issue with the Goal Keeper selected at trials not wanting to be the Keeper for the team, we overcame this with another player sharing the role of Keeper with the selected Keeper. This worked well as it allowed both players to play on the field as well as in goals. As the players are so young it was more important to provide a positive experience for these young players than to force the young boy selected as Keeper to only play in that position.

My focus as a coach was to improve each player, not just their hockey skills levels but also their understanding of the game and sportsmanship to make them better overall players.

Jenny Avery  
Coach



## 2015 NSW Representative Field Honours

### **Open Men**

BJ Bruton  
Luke Noblett  
Jack Elliott  
Ryan Proctor (released to SA)

### **Open Women**

Alysha Borg  
Kaitlin Nobbs

### **U21 Men**

Mitchell Scotcher  
Ryan Proctor  
Jack Elliott

### **U21 Women**

Samantha Danckert  
Kaitlin Nobbs

### **U21 Womens AAP Invitational**

Georgina Mallon

### **U18 Boys**

Oliver Flack  
William Graf

### **U18 Girls**

Georgina Mallon  
Miriam Pritchard

### **U15 Boys**

Rashil Jetley  
Angus Baird  
Miles Davis  
Tim Pritchard  
Ronan Shiels  
Patrick Vastani

### **U15 Girls**

Julia Bradley

### **U13 Boys**

Calam Baird  
Riley Nilan  
Sulaiman Mehmood

### **U13 Girls**

Destiny Peris

### **Masters Womens**

Karen Bowden 0'35  
Sheridan Gorman 0'35  
Georgina Gunner 0'35  
Amelia Smith 0'35  
Leanne Croft 0'40  
Sarah Dredge 0'40  
Monique Lester 0'40  
Tracy Bradford 0'45  
Sharon Brown 0'50  
Kirsty McIntosh 0'50











## 2015 Representative Indoor Teams

### U18 Boys

Logan	Hunter
Ernesto	Lazcano
Jack	Noblett
Matthew	Najdzion
Aodhan	Hannigan
Xavier	Dao
Bill	Graf
Brayden	Morrow
Matthew	Wren

Coach: Alex Lupton

Manager: Katherine Lazcano

Final Position: 5<sup>th</sup> Div 2

### U18 Girls

Kloe	Mannering
Amy	Malloy
Grace	Dallen
Lily	Tha
Alanah	Southan
Maisie	McFadyen
Meghan	Wheelhouse
Litiana	Field
Katherine	Sloan

Coach: Aaron Baker

Manager: Andrea Casteriano

Final Position: 4<sup>th</sup> Div 2



### U15/1 Boys

Jack	Fleming
Miles	Davis
Ronan	Shiels
Angus	Baird
Rashil	Jetley
Thomas	O'Reilly
Harry	Tanswell
Bill	Eustace

Coach: Alex Lupton

Manager: Fiona Baird

Final Position: 2<sup>nd</sup> Div 1

### U15/2 Boys

Emmerson	Weiley
Tim	Pritchard
Jonah	Riley
Patrick	Vastani
Oliver	Brownbill
Hugh	Dallen (withdrew)
Ian	Pedersen-Clarke
Liam	White
Riley	Nilan

Coach: Nicole Allsopp

Manager: John Clarke

Final Position: 1<sup>st</sup> Div 2

### U15 Girls

Tegan	Neowhouse
Julia	Bradley
Vienna	Williams
Talia	Morrow
Layla	Riley
Izzy	Shannon
Caitlin	Wasserman
Madeleine	Scott
Ellie	Burnett
Laura	Hooper

Coach: Jess Bingley

Manager: Paul Riley

Final Position: 5<sup>th</sup> Div 2

### U13 Boys

Calam	Baird
Sulaiman	Mehmood
Hal	Norved
Martin	Pedersen-Clarke
Matthew	West
Daniel	Miller
Jaidii	Freeman
Riley	Nilan
Cameron	Jones

Coach: Aaron Nilan

Manager: Ann Hodge

Final Position: 6<sup>th</sup> Div 1

### U13 Girls

Layla	Riley
Manon	McDermott
Xanthe	Fenwicke
Nina	Lane
Milla	Jarvis
Mimi	Kind
Isobel	McCaffery
Prudie	Dallen
Lillian (Billy)	Pritchard
Talia	Morrow

Coach: Litiana Field

Manager: Laura Torrible

Final Position: 6<sup>th</sup> Div 2

\* No teams entered for Opens

\* Masters are not held until Feb 2016

### **Sydney East U18 Boys Indoor Hockey Report**

The Sydney East U18 Boys Team after selections had one withdrawal due to schooling commitments. The team was as below:

Logan Hunter

Ernesto Lazcano

Jack Noblett (Captain)

Matthew Najdzion

Aodhan Hannigan

Xavier Dao

William (Billy) Graf (VC)

Brayden Morrow

Matthew Wren

Throughout the championship the boys worked collaboratively to achieve the following results:

Game 1: Won 6-0 v Wagga Wagga

Game 2: Lost 4-0 v New England

Game 3: Won 3-1 v Tamworth

Game 4: Lost 3-0 v Sydney 1

Play-offs: Won 5-1 v Illawarra 3

Throughout the weekend and during each game all the boys developed their indoor hockey knowledge and skills, whether in the form of technical, tactical or leadership skills. The boys consistently encouraged one another to keep working collectively on the court. The camaraderie and commitment from each player led to final result being so great in the play-off game.

I would like to thank all the parents for supporting and ensuring that all the boys attending training and the championship, as well as Sydney East Hockey Association for their commitment to developing junior indoor hockey players and entering teams so that players are able to gain opportunities.

I would also like to thank Katherine Lazcano for her efforts and support as manager and Nicole Allsopp and Briony Nilan for their assistance throughout the championship to ensure that boys were well supported.

I welcome other opportunities to coach Sydney East Indoor Teams.

Regards

Alex Lupton

Coach

## SEHA Under 18 Girls Indoor Report 2015

The under 18 girls had a solid championship, finishing a very respectable 4<sup>th</sup> in division 2 after losing the semi-final match to the eventual division winners, Dubbo.

The team got to a strong start on Friday evening with a 3-1 win over Illawarra-South Coast 4. Having never before played as a team, the girls came together and quickly settled into their team structure. Saturday tested the girls with 3 very tough matches which saw them walking away with a 3-2 win against Metro South-West 3, a 1-1 draw against Sydney 2 and a 3-2 loss against North-West Sydney. Full credit to the girls, after finishing 2<sup>nd</sup> in their pool and a late night match they came back early Sunday morning and did not disappoint with every player playing to the best of their ability. Unfortunately, Dubbo was too strong on the day snatching a 4-1 win thus ending the championships for our girls.

All of the girls were exemplary ambassadors for SEHA both on and off the court led by their outstanding captain, Litiana Field whom throughout the championships displayed integrity and maturity beyond her years.

Congratulations must go to the team's coach, Aaron Baker not only for the success of the team but also for the wonderful rapport he established with the girls. Aaron quickly identified players' strengths and adopted game strategies and structures to produce the best performance from each of his players.

### **The Team:**

**Coach:** Aaron Baker

**Manager:** Andrea Casteriano

Kloe Mannering (GK)

Amy Malloy

Grace Dallen

Lily Tha

Alanah Southan

Maisie McFadyen

Meghan Wheelhouse

Litiana Field **(C)**

Katherine Sloane

## **SEHA U15 Team 1 Indoor Hockey Report 2015**

Firstly, I wish to thank the SEHA Directors for the appointment of SEHA U15 Team 1 Indoor Hockey Coach. The young men and parents across both teams represented SEHA in a positive manner and expressed enjoyment throughout the weekend.

Training sessions were conducted at Port Hacking High and parents indicated what a fantastic venue it as. Thank you to Briony Nilan for organising these training dates.

The following are the results from the games:

Round	Opposition	Score	Goal Scorers
1	Met South West	4-1 loss	Rashil - 1
2	Lithgow	9-1 win	Bill - 1 Miles - 1 Ronan - 1 Angus - 2 Harry - 4
3	Newcastle	4-3 win	Rashil – 1 Ronan – 2 Bill – 1
4	New England	1-1 draw	Bill – 1
5	Central Coast 1	8-1 win	Ronan – 1 Harry – 1 Rashil – 2 Angus - 4
6	Grafton	4-2 loss	Rashil – 1 Angus - 1

Our first game proved to be a tough and quite physical game, however, we came back to improve and play some exceptional indoor against Lithgow and Newcastle scoring a range of field goals and penalty corners. While our game ended against New England in a 1-1 draw, our successful build up was noticeable, it was our finishing that lacked and we had several opportunities, including open goals that we did not convert. Thankfully scoring on full-time saw us go through to the semi.

Our semi-final against Central Coast 1 (who finished 1<sup>st</sup> in their pool) was fairly faultless, with the boys holding structure and following the game plan to the letter. An exceptional game, with an even better result.

The final saw the boys two nil up at half time but with seven minutes to go we allowed Grafton back into the game by making errors that cost us goals, such as allowing them the backline and not marking goal side. With fatigued players, the boys couldn't regather their mental toughness and Grafton ended up winning 4-2.

A successful weekend with three players – Angus, Jack and Rashil being named in the NSW U15 Boys Indoor Hockey Team.

I wish to make recommendations to the Board in regards to supplying first aid kits for managers. We did sustain an injury which required band aids and antiseptic for a cut occurring from a hit with a stick.

Also if the association could attempt to create a bank of umpires for State Championships for future years that would benefit the future of umpiring (although it would be nice if NSW Hockey attempted to schedule State Championships around the HSC not at the start).

Regards Alex Lupton

### **SEHA Indoor Boys Under 15/2s**

It was a very successful state championships at the Central Coast for the Under 15 2's boys team. We came out Champions of Division 2.

Our tournament began with 7 - 1 win against Southern Highlands. With a slow start we managed to fire up in the second half and score a few goals.

Game 2 we came against Illawarra South Coast 2 and played really well to come away with a 10-0 convincing win. We were very solid in defence and put away the goals in field play and corners.

Game 3 was also played on the Friday and the boys did well to rally after having 2 tough games earlier in the day. With a very slow start to the first half with the score nil all, the boys rallied and won, with the score 5-0 at full time.

Day 2 brought us 1 game against Wagga Wagga. This was a tough match with the score blowing out in the final 10 minutes for us to win 9-2.

Day 3 started with the cross over matches, seeing us play Sydney in the semi. This was the toughest match of the championship with the scores locked at 1-1 until the final whistle, where we had been awarded a penalty corner. This was converted and we won the match 2-1, advancing into the grand final.

The grand final was against Orange where we had the odds stacked up against us. The boys played brilliantly and kept their cool in some trying conditions. They defeated Orange 3-2 to win the grand final and take out Division 2.

I would like to thank all the players who made it such a positive and rewarding experience for myself, they were a pleasure to coach and are such talented players. Thank you to my manager John for his assistance at the championships. A big thank you to the parents who volunteered to do bench duty.

A very successful Championships DIV 2 STATE CHAMPIONS!

Nicole Allsopp  
SEHA U15/2 Boys Indoor Coach

**SYDNEY EAST HOCKEY ASSOCIATION**  
**U15 GIRLS INDOOR STATE CHAMPIONSHIPS, OCTOBER 2015**

TEAM: U15 Girls, Division 2

COACH: Jessica Bingley

MANAGER: Paul Riley

The SEHA U15 Girls competed in their first year as a division 2 team at the recent NSW Indoor State Championships in October. The team was comprised of both of age and underage representatives; a decision which offered a fantastic development opportunity for the younger players, with the opportunity for the more senior members to engage in a leadership role.

Leading up to the tournament, the team only had two training sessions, along with a 'scratch match' against North Sydney. In the future, I feel more emphasis should be put on team training and squad training, especially for these indoor tournaments that are held prior to the Club competition commencing. This would also potentially attract more numbers and allow for a more structured preparation.

The players involved in the U15s team by-far outplayed my expectations of them; winning our first game 10-1 against Metro South West. We were in a competitive pool and had a couple of more challenging games, only narrowly missing out on the semi-finals by 1 point; finishing 3<sup>rd</sup> in our pool and winning our final match to finish 5<sup>th</sup> place overall. Both the senior and more junior players performed at a level that will soon see the team in Div 1. The team also had players 'scouted' for NSW selection; Julia Bradley being selected in the NSW U15 Girls Team.

Overall, those who represented SEHA in their first year as an association demonstrated the strength, potential and quality of players involved in SEHA Juniors. I believe this team has the potential, with further development to take out the championship and play competitively in top division in the future years. I'd also like to commend Paul Riley's efforts as the Team Manager; who was a vital member of the team and readily coordinated the group leading up to and during the tournament. I feel Paul and I worked well as a team to allow for the girls to perform at their best and engage in the team environment both on and off the field.

Congratulations on a successful first season as SEHA.

Jessica Bingley

Coach

# 2015 SEHA Under 13 Boys Indoor Report

---

## **State Championship Results**

Round Game 1 v Grafton – lost 7-2

Round Game 2 v Sydney South – won 4-0

Round Game 3 v Tamworth – lost 6-1

Round Game 4 v Metro South West – won 5-1

Round Game 5 v Manning Valley – won 3-2

Playoff Game (3<sup>rd</sup> in Div 1 Pool A v 3<sup>rd</sup> in Div 1 Pool B) v North West Sydney – lost 2-0

It was a great group of talented players that got on well together from the first training session. It was always going to be a bit of unknown as to how we would go in Division 1 but I was positive we could get some good results.

We started the championships off well going up 2 nil early over the highly ranked Grafton team. Unfortunately the end result did not go our way but the boys knew that they would have to be tougher and stronger for the full 40mins in the next few games to get better results and that is what they did. Winning 3 out of the next 4 games finished the team off 3<sup>rd</sup> in their pool.

On the final day we lost our playoff with the other team who came 3<sup>rd</sup> in the other pool in Div 1. So our overall position was 6<sup>th</sup> in Division 1. This was excellent result as this allows SEHA to retain the ranking of Division 1 in 2016.

I also would like to thank the team manager, Ann for all her work behind the scenes and during the games as well as Graham for being on the tech bench. To Angus, my assistant coach, thank you. It is good to see the association allowing and encouraging young talented players to learn more and develop coaching skills for the future.

Thank you to SEHA for giving me the opportunity to coach this team. I had an enjoyable time.

Aaron Nilan  
SEHA U13 Boys Indoor Coach



# Sydney East Hockey Association

## U13 Girls Indoor Report

This year SEHA entered a team in the NSW U13 Girls Indoor State Championships for the first time. For some girls this was their second or third year playing at an indoor state championships but for others this was their first time on the big stage.

### Day 1

#### Game 1 v Southern Highlands 1

Our first and only game for today was against an experienced team that towered over many of our players. For a first game together, things went well as the girls started to link together and find their teamwork but the Southern Highlands girls were too strong.

**Southern Highlands defeated SEHA 3-0**

### Day 2

#### Game 2 v Northern Sydney & Beaches 2

This was a very tight defensive game with neither side able to penetrate the defence. Unfortunately for us, the umpire of the game on the next court was standing next to the umpire on our court. The girls got confused and conceded a very unlucky goal. The girls worked non-stop after that to even up the score but were unable to get a goal back.

**Beaches defeated SEHA 1-0**

#### Game 3 v Newcastle

SEHA dominated this game. Newcastle were unable to penetrate our defence. Our passing was good, our tackling was great and our teamwork had greatly improved but we just couldn't score the goals.

**SEHA drew with Newcastle 0-0**

#### Game 4 v Dubbo

This was our 3<sup>rd</sup> and last game for the day. After the disappointment of the Newcastle draw, we made a few small changes to positions and the girls went out determined to win. The result was our first goals of the tournament! From four penalty corners awarded to us, we managed to score from two of them. Our defence was still rock solid but this time we were able to convert our opportunities in the circle and came away with our first win. It was such a great feeling after such a long day.

**SEHA defeated Dubbo 2-0**

### Day 3

#### Game 5 v Orange

Game 5 and it finally all came together as a team. Orange were a solid team but goals to Layla, Prudie and Milla gave us the win. The win meant that the girls finished 3<sup>rd</sup> out of 6 teams in their pool and would play off for 5<sup>th</sup> and 6<sup>th</sup> against the 3<sup>rd</sup> placed team in the other pool.

**SEHA defeated Orange 3-1**

#### Playoff 5th and 6th v Bathurst

The effects of a long tournament started taking its toll on the girls and Bathurst skipped out to a 3 – 0 lead at half time.

The half time break enabled the girls to refocus and they started the second half where they left off against Orange.

Penalty corners again were strong with Tahlia scoring from two. Unfortunately the half time deficit was too much.

**Bathurst defeated SEHA 3-2**

We are so happy and proud of these girls. As expected for a new, mostly inexperienced team, things slowly started to take shape. Every game showed a big improvement and if a few things had gone our way, we could easily have been playing in the semi finals. The girls were great and showed real determination in defence. The most pleasing part, however, was the improvement in attack. We went from scoring no goals in the first three games to scoring 7 goals in the last three games. Great stuff! Things are looking good for next year.

Litiana Field

SEHA U13 Girls Indoor Coach



## **2015 NSW Representative Indoor Honours**

### **Open Men**

BJ Bruton

Luke Noblett

### **U21 Women**

Samantha Danckert

### **U18 Boys**

(yet to be announced)

### **U18 Girls**

### **U15 Boys**

Rashil Jetley

Jack Fleming

Angus Baird

### **U15 Girls**

Julia Bradley







# Sydney East Hockey Association

