



Introduction

The Sydney East Hockey Association (SEHA) was formed in 2015 under the Hockey NSW restructure of associations in NSW. SEHA is the third largest association in the state based on membership and one of six associations in the Greater Sydney area and covers an area 400 sq. Km, taking in 12 local government areas, from the City, Glebe and Concord in the city/inner west, out to Bankstown in the south-west, down towards the Sutherland Shire in the south and back into Daceyville and the Eastern Suburbs. The association boasts more than 2000 players incorporating 15 affiliated hockey clubs, 13 schools and four synthetic turf fields and a few grass fields.

OUR REGION



SEHA conducts local junior (mixed and schoolgirls) and senior competitions and provides regional representative level hockey and development pathways for its members, to State Championship level, in field and indoor hockey, for juniors, opens, and masters, boys, girls, men and women.

Our members also play in other competitions noting our men's clubs play in the Sydney wide, Sydney Men's Opens and Masters Hockey competitions, and some women's teams play in the Sydney Women's Hockey League - Opens and Masters.

OUR VISION

CHAMPION THE GROWTH OF HOCKEY.

OUR MISSION

FOSTER A SAFE AND INCLUSIVE ENVIRONMENT THAT PROMOTES PARTICIPATION AND DEVELOPS HOCKEY WITHIN THE SYDNEY EAST COMMUNITY.

Contents

Introduction	1
OUR REGION	1
OUR VISION	1
OUR MISSION	1
Contents	2
1. PRESIDENT'S REPORT	4
1.1. Table 1 - SEHA member participation survey	7
1.2. SEHA Structure 2022	8
1.3. 2022 Our Office Bearers and Volunteers	8
2. GOVERNANCE DIRECTOR'S REPORT	11
2.1 Board Meetings Attendance 2022	11
2.2 Board Director Terms History	12
2.3 Membership Profile	12
2.4 SEHA Affiliated Clubs	13
3 FINANCE DIRECTOR'S REPORT	14
3.1 Auditor's Report	15
3.2 SEHA Balance Sheet 30 September 2022	16
3.3 SEHA Profit & Loss Statement 1 October 2021 to 30 September 2022	17
3.4 Donation to Far North Coast Hockey	18
3.5 Schedule of Fees 2022	19
4 SEHA WOMEN'S COMPETITION DIRECTOR REPORT	20
5 JUNIOR COMPETITION REPORT	22
6 DEVELOPMENT DIRECTOR REPORT	23
6.1. Junior Umpire Development Report	25
6.2. SEHA Centre of Development Program Participants	26
6.3. COD Regional Challenge at Newcastle	29
7 SEHA REPRESENTATIVE DIRECTOR'S REPORT	30
7.1 SEHA Junior Field Teams 2022	33
7.2 SEHA Open Field Teams 2022	47
7.3 SEHA Masters Field Teams 2022	49
7.4 SEHA Indoor Teams 2021	58
8 SEHA REPRESENTATIVE PLAYERS 2022	67

9	SEHA LIFE MEMERS	72
10	STRATEGIC PLAN	73
11	SEHA Affiliated Clubs Contacts.....	74

Cover shot : 2022 U11 York Cup Winners Tamworth

ABN No: 98 153 957 262

2015 - Incorporation Inc no:1500482

1. PRESIDENT'S REPORT

Play Watch and Love the Game with SEHA

On behalf of the Board of the Sydney East Hockey Association (SEHA), I am pleased to present the Annual Report 2022, including the audited financial statements showing a operational deficit of (\$23,450), noting approximately \$27,000 was held over for refunds and credits to be made in this 2022 season arising from early abandonment of the season last year (see financial report).

We look back on the previous two years and marvel at the way hockey was able to come together in 2022 after the impact of the global pandemic. The importance of sport to our sense of community and normality was underlined by the success of this year's season. The will to see our friends, be part of a team and participate reinforces what hockey means to us all.



In our SEHA region, with the commitment of our tireless volunteers, we were able to emerge from the pandemic disruption, prioritise our resources and finally progress an exciting and complete season of hockey. 2022 was characterised by not only the return of previous SEHA participants but an increase in new players taking the field. While other sports experienced a dint in participation given the extended layoff and disrupted, we were able to not only retain but build and increase participation across both senior and junior competitions. We thank you for your ongoing commitment and enjoyment of what we consider to be the best sport in the world.

Our SEHA community stepped up to face all these challenges, SEHA embraced technology such as zoom to facilitate association wide communication (thanks to tech savvy Mia Strecker-Reeves). We worked collaboratively with our clubs to focus on member retention and ultimately provide a safe environment for hockey allowing the return to the field of play. We welcomed Emma Highwood the new CEO for HNSW and introduced her to our club Presidents via a zoom session, providing her with direct insight into our clubs and our region.

We remained true to our mission growing hockey in our area and proudly served:

- Members – 2,022 registered playing members comprising (o18: 1383, u18: 639),
- Clubs - 15 affiliate Clubs and 6 non-affiliated clubs,
- Competition Teams - 26 women's teams, 38 junior teams,
- Representatives Players – approx... 400 rep players across juniors , opens, masters
- Facilities – 1 successful NSW Office of Sport grant - Daceyville hockey turf resurface
- Affordability - SEHA is a registered Active Kids Provider - families benefited from the HNSW – Active Kids Rebate (\$100 vouchers school age kids) program once again.

Also the SEHA association Fee (\$20) has not increased over the past 8 years.

2022 Highlights and challenges:

SEHA applied its governance framework to deliver performance and conformance and a huge thanks to Mia Strecker-Reeves Development Director for ensuring we walked the talk and applying our policies when needed.

Our clubs members are fortunate to benefit from our portfolio of Development Programs and we are so lucky to have the leadership passion drive and commitment of Development Director Debbie Dodd overseeing:

- Whistle Warriors for beginners and adults and separate work with officials
- Centre of Development program u13/u15s peaked this summer with 119 players
- NCAS Level 1 coaching courses at Glebe Briars, UNSW
- 3 x Coaches at the NCAS Level 2 course,
- 2 x female coaches in the T60 Program for women coaches

An objective in our strategic plan is to ensure safe, quality and accessible facilities that support participation growth. Two key outcomes were achieved this year:

- Our past lobbying efforts with Hockey NSW to raise the importance of resourcing expertise in the area of facility development to support venue owners with government grant applications has seen a new role created this year at HNSW.
- SEHA's successful grant application - A tripartite agreement joint SEHA (applicant as an incorporated entity) / UNSW Hockey Club / UNSW university (as land owner) grant application to upgrade Daceyville turf has been successful with the Office of Sport granting \$588,000 to upgrade resurface the hockey pitch. In addition separately the University of NSW has agreed to fund upgrading the lighting at the facility. This vision would not have been realised with out the collaborative effort of the parties to the Agreement and the leadership and expertise of Fiona Pak Poy



SEHA is actively working to create a culture within SEHA that aligns with the Hockey NSW “PRIDE” values and broader conduct and member protection policies set by our governing bodies which are publicly available on our internet and embedded in our competitions, development programs and representative activities. This is not possible without the leadership and tireless work of our respective directors in these portfolios.

Our finances demonstrated the resilience of our Association. With skilful financial management by Lisa Jarvis, Finance Director, SEHA was able to endure the past interrupted seasons and emerge with our reserves intact. All the while balancing not only our books but also by being fair to our members and only charging fees that represented the partial seasons.

We will build upon the success of 2022. Next year, the Committee will turn its attention to redesigning our strategy with the objective of introducing more children to the joy of a hockey’s technical and social aspects while maintaining the enthusiasm and strengthening our opens and masters’ competitions. The strength of our competitions will be supported by the nurturing and development of our officials both on the field and sidelines.

Thank you to you all:

We congratulate Lorelle Byers whose more than 50 years’ service to hockey was acknowledged with HNSW Life Membership at this year’s HNSW Awards night

Partners and Sponsors – we value XPress Promotions our merchandise partner, and our sponsor John Halkitis at Rhino Mouthguards.

This is only possible with the support of our exceptional volunteer base; our Board Directors, Convenors, Committees, Umpires, Officials, Coaches, Managers, Safety Coordinators and so many parent volunteers.

Finally, I feel so very fortunate to work with such a wonderful bunch of people who were so dedicated, thank you to my fellow Directors Tanya Arathoon, Graeme Barnard, Mia Strecker-Reeves, Chris Thuell, Lisa Jarvis and Debbie Dodd for their teamwork, absolute commitment and resilience to deliver their portfolio in another extraordinary year!

Kathy Calokerinos

SEHA President

1.1. Table 1 - SEHA member participation survey

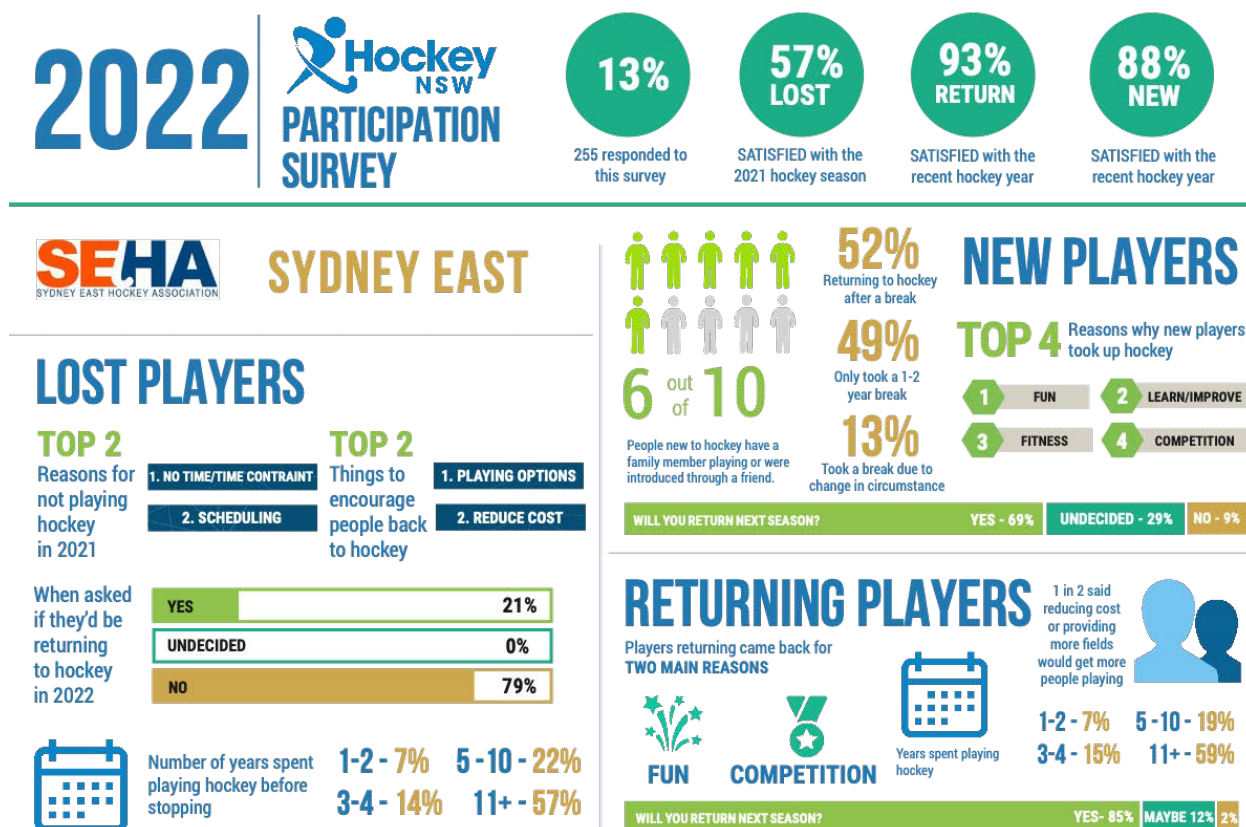
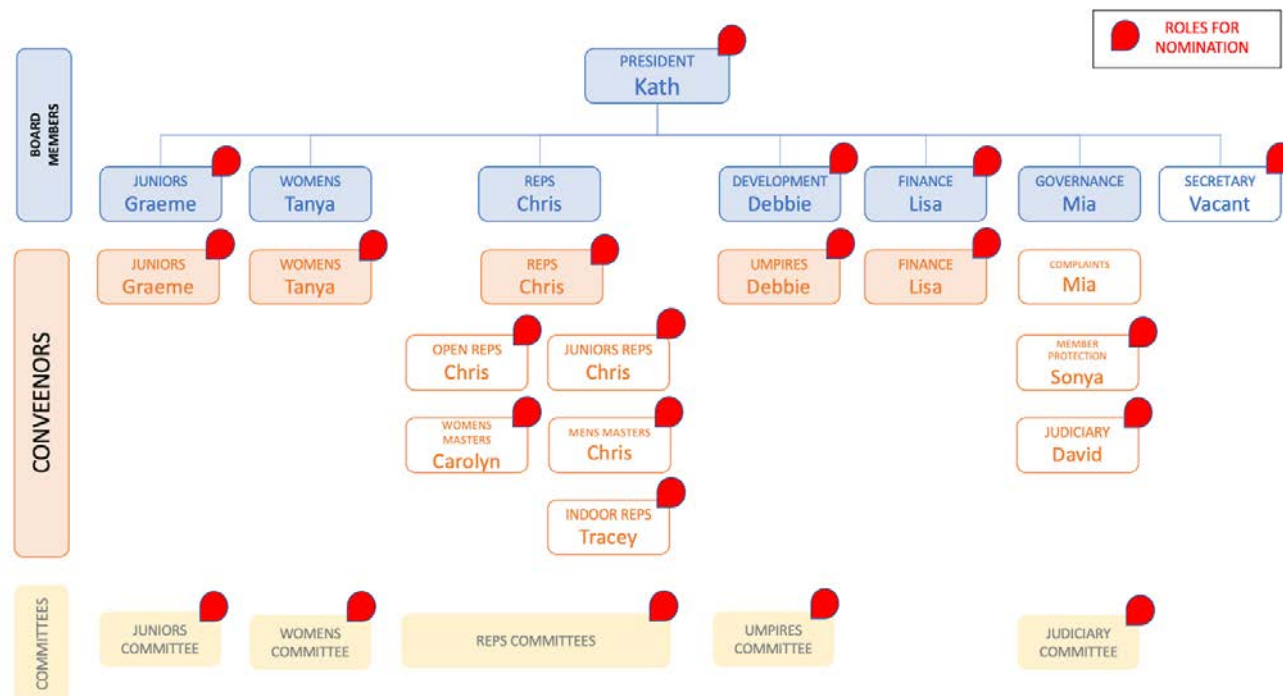


Table 1 provides summary results of the SEHA member participation survey facilitated by Hockey NSW our governing body for an insight on lost, new and returning players.

1.2. SEHA Structure 2022



1.3. 2022 Our Office Bearers and Volunteers

SEHA 2022 Directors, Conveners, Committee Members	
Board of Directors and Secretary	
President	Kathy Calokerinos
Secretary	<i>vacant</i>
Finance	Lisa Jarvis
Governance	Mia Strecker-Reeves
Women's	Tanya Arathoon
Juniors	Graeme Barnard
Representatives	Chris Thuell
Development	Debbie Dodd

Administration	
COVID-19 Safety Coordinator / Complaints	Mia Strecker-Reeves
Member Protection Officer	Sonya Le Huray
Judiciary Committee	David Mallon (Chair), Luke Fleming, Rae Valeski, Vivian Bath
Website/Facebook/Instagram	Kathy Calokerinos, Tanya Arathoon, Chris Thuell, Mia Strecker-Reeves
Auditor	Linda Lowe
Representatives	
Open Men's Rep Committee	Vacant - led by Chris Thuell
Open Women's Rep Committee	Vacant - led by Chris Thuell
Junior Rep Convenor	Chris Thuell (Convenor)
Committee	Adrian Jones, Janet Mathews, Kathy Calokerinos, Katrina Cochrane,
Indoor Rep Committee	Chris Thuell, Tracy Najdzeon
Masters Rep Convenors	Women - Carolyn Davies, Men - Sean Glassford Women's Masters Managers: Kylie Norris, Sharon Knight, Yolanda de Winter, Laura Jones
Competitions	
Junior Comp Committee	Chair - Graeme Barnard (Bankstown), Secretary - David Richardson (Sutherland) Umpire: Lindesay Brine Adrian Jones (UNSW), Justine Maroney (Sharks), Kim Brooks (Moorebank), Natalie Ambrose (Sydney Uni), Penny Ashman/Jenny Palmer (Cronulla RSL), Ray Valeski (Bankstown), Teal Els (St George-Randwick), Tara Taylor (Glebe)
Women's Comp Committee	Convenor -Tanya Arathoon (Dolphins) Carolyn Davis (St George), Jodie McIntosh (Esquires), Kara Seymour (Bentstix), Mia Strecker-Reeves (Dolphins), Stacey Konstanopolous (UNSW)

Development	
Regional Participation Coordinator	Andy van Pelt (Hockey NSW RPC)
COD Program Coaches 2021-22	Kathy Calokerinos, , Luke Fleming, Adrian Jones, Bella Sandy, Jenny Avery, Katrina Cochrane, Wade Johnson, Phil Sams
Umpiring & Officials Development	<p>Juniors Umpire Coordinator - Lindsay Brine</p> <p>Umpire Coaches - Luke Fleming, Chris Thuell, Alison Banks, Kath Calokerinos, Alex Withey, Jodie McIntosh, Ian Soares, Malik Rasool, Marilyn Brown and Debbie Dodd.</p>



SEHA Board (L to R): Graeme Barnard, Mia Strecker-Reeves, Debbie Dodd, Lisa Jarvis, Kathy Calokerinos, Chris Thuell, Tanya Arathoon name (absent)

2. GOVERNANCE DIRECTOR'S REPORT

It was so great to see all our operations to return to our standard formats, full seasons for our competitions and representative teams travelling again.

Firstly and most importantly, I want to thank everyone in the SEHA community for their continued participation during yet another Covid impacted year. Whilst the focus was to ensure our competitions ran smoothly, we were able to do so safely despite Covid still impacting on our clubs, teams, players and officials.

Additionally, this season we reviewed our SEHA documentation as we continue to align to the Hockey NSW and Hockey Australia policies and procedures as published on our website.

I would like to thank the ongoing support that is provided to our SEHA competitions by David Mallon (Judiciary Convenor), Luke Fleming, Rae Valeski, Vivian Bath (Judiciary panel) and Sonya Le Huray (Member Protection Officer).

Sincere thanks to the rest of the SEHA Board, Hockey NSW, our clubs, venues, team managers, coaches, players, officials, umpires, ground marshals and parents and friends for their ongoing support throughout the season.



Mia Strecker-Reeves,

SEHA Director Governance

2.1 Board Meetings Attendance 2022

Via Zoom	Board Meeting	1	2	3	4	5	6	7	8	9	Total
	Date	Feb 15	Mar 14	Apr 12	May 17	May 30	Jun 30	Jul 7	Aug 25	Nov 9	
President	Kathy Calokerinos	1	1	1	1	1	1	1	1	1	9
Secretary	Vacant										
Finance	Lisa Jarvis	1	1	A	A	1	1	1	1	A	6
Governance	Mia Strecker-Reeves	1	1	1	1	1	1	1	1	1	9
Women's	Tanya Arathoon	1	1	1	A	1	1	1	A	A	6
Juniors	Graeme Barnard	1	1	A	1	1	1	1	1	1	8
Representative	Chris Thuell	1	1	1	1	1	1	1	1	1	9
Development	Debbie Dodd	1	1	1	1	1	1	1	1	1	9

A - Apology

2.2 Board Director Terms History

SEHA AGM	Calendar Year	Board Position		Board Position		Board Position		Board Position		Board Position		Board Position		Board Position		Secretary Role	
		Kath		Tanya		Graeme		Chris		Mia		Lisa		Deb			
2014	2015	Elected	1	Elected	1	Elected	1										
2015	2016		2		2		2										
2016	2017	Elected	1	Re-elected	1	Re-elected	1										
2017	2018		2		2		2	Elected	1	Casual	1						
2018	2019	Re-elected	1	Casual	1	Elected	1		2		2	Casual	1	Elected	1		
2019	2020		2	Elected	1		2	Re-elected	1	Elected	1		2		2	Casual	1
2020	2021	Casual	1		2	Re-elected	1		2		2	Elected	1	Re-elected	1		2
2021	2022		2	Re-elected	1		2	Re-elected	1	Re-elected	1		2		2		VACANT
2022	2023	OPEN	1		2	OPEN	1		2		2	OPEN	1	OPEN	1		OPEN

Note: Affiliated Clubs nominate Board Directors for election at AGM. The Board has the power to fill Casual vacancies with suitable qualified persons. Constitution allows up to 7 directors and Secretary.

2.3 Membership Profile

FAST FACTS

Age	2022	%	2021	2020	2020	2019	2018	2017
O18	1383	67	1237	1219	1219	1311	1253	1234
U18	750	33	637	566	566	634	658	604
Total	2133	100%	1916	1785	1785	1989	1911	1838
Average age	28		28	28	28	27	27	

Gender break-down	2022	%	2021	2020	2020	2019	2018	2017
Female	1097	54.3	1006	942	942	1064	1020	
Male	917	45.4	906	838	838	921	887	
other	18	0.3	4	5	5	4	4	
	2022		1916	1785	1785	1989	1911	

2.4 SEHA Affiliated Clubs

SEHA AFFILIATED CLUBS	2022	2021	2020	2019	2018
Bankstown Sports Hockey Club Inc.	86	96	97	153	135
Bentstix Hockey Club	145	125	114	117	93
Briars Hockey Club	358	360	381	429	372
Canterbury Women's	25	23	25	28	25
Eastcoast Dolphins Women's Hockey Club	32	35	34	46	48
Easts Hockey Club	16	73	75	79	80
Easts Women's	49	63	65	72	76
Esquires	26	22	19	24	33
Glebe District Hockey Club	362	342	306	350	366
Monterey	17	27	25	29	26
POHOGS	30	10	30	29	17
Revesby Workers	13	4	13	12	9
St George Randwick Hockey Club	247	215	198	191	233
UNSW	454	444	352	367	354
Western Suburbs	18	5	14	17	19
Other - SEHA Women's Masters	28	21	22	20	27
Other - SEHA Schoolgirls reps	19	7	5	16	
Other - SEHA Reps	86	16	6	6	
Other	11	56	4		
Total	2022	1916	1785	1985	1911

OTHER Clubs/Schools participating in our competitions
Women's – Cronulla RSL Hockey
Juniors - Moorebank Hockey Club
Women's /Juniors- Sharks Hockey Club
Women's/Juniors - Sutherland District Hockey Club
Junior's- Sydney University Hockey Club
Sydney Girls High School

3 FINANCE DIRECTOR'S REPORT

I think we can all agree that it was fantastic to have a full hockey season. This was clear with a strong SEHA paid membership total of 2,000.

This year we are moving to an accrual reporting basis to overcome the reporting issues with late bills. The total income for the year was \$183,080.14. This was down slightly by 6.5% compared to last year which was to be expected and noted in last years' report because of the income in advance received with season abandonment and the associate credits applied in 2022 year.

There was also no schoolgirls competition this year.

SEHA donated \$5,000 to Far North Coast Hockey after the flooding in Lismore. Acknowledgement letter from them attached.

Cost of sales was \$196,845.78. This was higher than last year by 38% as we had a full hockey season. We also had a late bill paid for the SWHL Competition 2021 which was paid and entered in this financial year – another reason why now we are on an accrual basis so these late bills will not affect next year figures.

In the end we are showing a loss of \$23,450.85 as expected due to credits paid out from FY 2022. Juniors' total credits applied was \$17,215, junior reps was \$2,640.

Bank accounts are healthy – Our Cheque account had a balance of \$88,902.28 on 30th September 2022 and our Term Deposit has \$77,041.71

As the same as last year SEHA's fees for 2023 will remain the same \$20 per adult and \$12 per junior.

The audited financial statements for Profit and Loss follow.

The directors have determined that the association is not a reporting entity and that this special purpose financial report should be read in conjunction with the Treasurer Report attached to the financial statements.

The directors of the Association declare that:

1. the financial statements and additional notes, as set out in the financial statements, present fairly the association's financial position as at 30 September 2022 and its performance for the year ended on that date; and
2. in the directors' opinion there are reasonable grounds to believe that the association will be able to pay its debts as and when they become due and payable.

This declaration is made in accordance with a resolution of the Board of Directors.

Lisa Jarvis
SEHA Finance Director



3.1 Auditor's Report

Linda Lowe - Principal

17 November 2022

Sydney East Hockey Association
Email: Finance@seha.com.au

Dear Committee & Members

Sydney East Hockey Association: ABN 98 153 957 262

I have reviewed the accounting records for Sydney East Hockey Association (SEHA) for the period 1 October 2021 to 30 September 2022. My review is to provide an opinion as to whether the financial report as a whole is free from material misstatement. Please note, my review is not a guarantee that all errors or misstatements will be detected. Misstatements can arise from fraud or error and are considered material if, individually or in the aggregate, they could reasonably be expected to influence the economic decisions of users taken on the basis of this financial report.

The financial report and my review should be read in conjunction with the Treasurer's report so that users can understand the whole financial position of the Association for the financial year.

Opinion

The accounts for SEHA this year are prepared on an accruals basis and the Balance Sheet is presented as at 30 September 2022 on this basis. Items recorded in the Profit and Loss Statement for the year 1 October 2021 to 30 September 2022 appear to be correctly entered and classified based on my review. Overall, the attached Balance Sheet and Profit and Loss Statement prepared reflect the financial operations during the year.

Grant Funding

SEHA was granted funding from the NSW Office of Sport to resurface the synthetic turf at David Phillips Sports Complex during the financial year. Under the Tripartite Funding Agreement entered by SEHA, the delivery organisation for the project is UNSW Sydney. As such, the grant funding has been paid directly to UNSW Sydney. The financial report presented and reviewed excludes the grant income and any expenditure associated with the turf resurfacing project.

If you have any questions please do not hesitate to contact me on 0407 493 459.

Yours sincerely



Linda Lowe



Tax agent
16715003

lowelinda@optusnet.com.au • 0407 493 459 • Beverly Hills NSW 2209
ABN: 72 015 869 592

Liability limited by a scheme approved under Professional Standards Legislation

3.2 SEHA Balance Sheet 30 September 2022

Balance Sheet

Sydney East Hockey Association
As at 30 September 2022

	30 SEP 2022	30 SEP 2021
Assets		
Bank		
ANZ AU CC 456480XXXXX9674	1,130.00	-
ANZ Chq 012257 294247753	88,902.28	-
ANZ Credit Card	-	2,146.98
SEHA ANZ Account	-	102,569.42
Term Deposit Account	77,041.71	76,887.94
Total Bank	167,073.99	181,604.34
Current Assets		
Accounts Receivable (A/R)	20,140.31	500.00
Total Current Assets	20,140.31	500.00
Non-current Assets		
Equipment @ Cost	2,646.83	2,646.83
Equipment Accum Depreciation	(2,646.83)	(2,646.83)
Uniforms @ Cost	10,626.00	10,626.00
Uniforms Accum. Depreciation	(10,626.00)	(10,626.00)
Total Non-current Assets	-	-
Total Assets	187,214.30	182,104.34
Liabilities		
Current Liabilities		
Accounts Payable (A/P)	25,021.25	4,420.90
ATO Clearing Account	-	(7,259.18)
GST	1,890.17	1,188.89
Total Current Liabilities	26,911.42	(1,649.39)
Total Liabilities	26,911.42	(1,649.39)
Net Assets	160,302.88	183,753.73
Equity		
Current Year Earnings	(23,450.85)	50,280.11
Retained Earnings	183,753.73	133,473.62
Total Equity	160,302.88	183,753.73

3.3 SEHA Profit & Loss Statement 1 October 2021 to 30 September 2022

Profit and Loss

Sydney East Hockey Association

For the year ended 30 September 2022

	2022
Trading Income	
Assoc Administration Fees	30,321.22
Competitions:Junior Competition	23,136.41
Competitions:Schoolgirls Competition	1,700.00
Competitions:Womens Competition	76,954.40
HNSW Grass Roots	1,000.00
Interest Income	153.77
Representatives:Indoor Reps:Junior Indoor Reps	8,445.49
Representatives:Indoor Reps:Open Women's Reps	1,090.90
Representatives:Indoor Reps:Women's Masters Reps	1,518.17
Representatives:Junior Reps	31,402.89
Representatives:Masters Reps:SWHL Masters	1,000.00
Representatives:Masters Reps:Women's Masters Reps	3,345.45
Representatives:Open Men's Reps	1,265.99
Representatives:Open Women's Reps	1,745.45
Total Trading Income	183,080.14
Cost of Sales	
Association Fees	13,601.82
Awards & Trophies	2,820.76
Coaching	7,093.27
Competition Entry	24,334.55
Competition Entry:SWHL Masters Comp	6,698.19
Equipment	388.92
Field/Turf Hire	113,817.25
Gifts for Club Committee Members	214.82
Other Costs	2,686.50
Umpiring and convening	23,880.00
Uniforms	1,309.70
Total Cost of Sales	196,845.78
Gross Profit	(13,765.64)
Operating Expenses	
Advertising/Promotional	2,545.46
Bank Charges	320.00
Board Expenses	311.40
Donations	4,545.45
Other Expense	672.34
Revolutionise Sport	246.10
SEHA Merchandise	627.00
Subscription	417.46
Total Operating Expenses	9,685.21

3.4 Donation to Far North Coast Hockey

FAR NORTH COAST HOCKEY
INCORPORATED

Phone Clubhouse: 02 66243101
 President: Nathan Kesteven 0428 351 956
 Secretary: Clint Mallett 0414 301 668
 Treasurer: Leah Shipton 0417 629 725

Facsimile: 02 66243101

**P.O. BOX 4079
GOONELLABAH 2480**



Email: fnchockey@bigpond.com

26-08-2022

To Ms Lisa Jarvis
finance@seha.com.au

Dear Lisa

Refer: Financial support of our flood victims - Far North Coast Hockey

Apologies for the lateness of this response but FNC Hockey was not spared in the flooding of Lismore and District on the 28th of February and 28th March 2022. Many of our members and our own hockey complex was impacted by these devastating events. FNC Hockey endeavoured to assist as many people as we could through this time and improve some aspects of their lives. Our endeavours were made a reality by the generous donations of so many people and organisations.

FNC Hockey and its members hereby extend our sincere thanks and gratitude to you Lisa and those members of Sydney Easts Hockey that you represent for your exceptional and very generous contribution. Your assistance assisted us reach a target of more than \$21,000.00 and 65 of our members both senior and junior have directly benefited by your support.

We have been overwhelmed by the support where we hoped to reach a \$10,000.00 target and our expectations have been pleasantly surpassed. Your generosity has been warmly welcomed and we again thank you.

Kindest Regards
 Clint Mallett.
 Secretary Far North Coast Hockey
 Mob: 0414 301 668
 E: fnchockey@bigpond.com

3.5 Schedule of Fees 2022

Membership Type	Age as at 31/12/2021	National Insurance (a)	Hockey Aust (incl insurance) (b)	HNSW Total (incl fees and admin charges) (c)	Total Higher Fees (b+c) = (d)	SEHA Admin Fee (e)	Total Registration Fee Due (d+e)=(f)
Stick2Hockey: Junior Playing Membership	8 and Under	\$12.00	\$20.00	\$15.41	\$35.41	\$12.00	\$47.41
Junior Playing Membership	11 and Under	\$12.00	\$35.00	\$24.42	\$58.42	\$12.00	\$70.42
Youth Playing Membership	18 and Under	\$12.00	\$35.00	\$55.51	\$90.51	\$12.00	\$102.51
Adult Playing Membership	19 and Over	\$12.00	\$43.00	\$106.58	\$149.58	\$20.00	\$169.58
Masters Player Only	Playing one Masters State Championship Only	\$0.00	\$0.00	\$57.80	\$57.80	\$20.00	\$77.80
Non-Playing Officials Memberships Officials, Coaches and Managers	Non Playing Membership	\$0.00	\$0.00	\$20.00	\$20.00	\$0.00	\$20.00
Non-Playing Supporters Membership Club level supporter, administrators, Volunteer	Non Playing Administration Membership	\$0.00	\$0.00	\$0.00	\$0.00	\$0.00	\$0.00

All members must pay registration fees before taking the field in any competition.

All players will be charged additional playing fees by their club to play in competitions they enter.

All representative players will be charged additional representative team playing fees on a cost recovery basis.

4 SEHA WOMEN'S COMPETITION DIRECTOR REPORT

Three cheers for a full season of hockey!

After two seasons of half seasons, we managed a successful and competitive 2022 – a full season. By all accounts, the players enjoyed getting back into the sport – the volunteers I think felt the strain of the full season once more.

Again, I must thank our Women's Committee – Kara Seymour, Mia Strecker-Reeves, Carolyn Davies, Jodie McIntosh, and Stacey Konstanopolous for their time this year as they took on a role on the committee as well as their own club and multiple other commitments. We are blessed to have them.

Thank you also to the Club Delegates, Umpires, Convenors and Venue operators who stepped up to help the competition run smoothly and efficiently. Also, to the Board for their support of the competition.



2022 was the first season our Schoolgirls competition was no longer running due to the spread of IGSSA across both terms. We welcomed Sydney Girls High School to our competition this year as the changes left them without a competition. It was a hard year for them, but the girls and coaching staff remained optimistic, and we hope to welcome them back in 2023.



For the first time we split Grand Final Days into the Saturday/Sunday to allow players to participate on their normal day of games.

Results

Premier Sharks

2nd Grade Dolphins

3rd Grade Briars

4th Grade UNSW 4B



It was wonderful weather for great hockey, lots of smiling faces (old and new) and just a great weekend.

After many years of deliberation and some firm consultation this year it was decided to run our competition from 2023 onwards – all on the one day – Sunday. This is due to the reduced participation in 2022 and the shrinking availability of local fields – and competition with the SHA competition. We hope this change in 2023 will strengthen our base ahead of the inevitable Sydney wide competition reform.



So, thank you once again and wishing everyone a restful off-season.
Here is to 2023 - bigger and better than before!

Tanya Arathoon

SEHA Women's Competition Director



5 JUNIOR COMPETITION REPORT

It was great to finally get a full season of Hockey completed this year after two interrupted seasons. 2022 saw 42 teams, from U9 to U17; from 9 clubs.

The season

9 clubs – including 5 non-SEHA clubs – entered a total of 42 teams, across 7 divisions, from U9 to U17. The season commenced with round 1, on 25th March and finished with the Grand Finals being held at Bankstown, on Sunday 4th September.

The grand finals saw teams from 7 different clubs compete, in all divisions except for the U9s, which is non-competitive.

The results were:

U11B	Moorebank	Drew with	Sydney Uni HC (USYD)	2-2 *
U11A	UNSW Pilots	defeated	Sutho Geckos	2-1
U13B	Glebe Hornets	defeated	Sutho Thorny Devils	5-2
U13A	Glebe Redbacks	defeated	Sutho Geckos	1-0
U15	St George Dragons	defeated	Sharks	2-0
U17	Moorebank	defeated	St George Dragons	2-1

* Moorebank and Sydney Uni were declared joint premiers in U11Bs, after two periods of extra time saw the scores still locked at 2 all. U11's do not go to penalty strokes.

Finances

With all clubs having paid full competition fees last season, before the season was abandoned, a credit was passed to all clubs, based on their 2021 team entries. A total of \$17,215 was deducted from this year's entry fees.

Total income for the Junior Comp was \$23,573 (ex GST), with total expenditure of \$42,813, giving a planned net operating loss of \$19,240. This was planned, to offset the operating surplus from last year of \$20,874.

In conclusion

I would like to thank all the members of the junior competition committee, who worked together to ensure that the season ran smoothly. Thanks also goes to all the coaches, managers, umpires, players and parents, who all participated in a good, friendly atmosphere.

I trust that the competition will continue to flourish and help develop hockey players and officials into the future.

Graeme Barnard

SEHA Junior Competition Director

6 DEVELOPMENT DIRECTOR REPORT

Well it was fabulous to get a full year of our local competitions and State Championships, with Indoor State Champs still in progress.

The 2022 season and year saw more opportunities for development of umpires and umpire coaches, players and player coaches and technical officials in our senior women's and junior competitions. Sadly our schoolgirls competition is no longer around as an easy starting point for adult umpires and where many of our umpires started their journey. Being able to attend Opens, U18s, U15s and U13s state championships and numerous carnivals was hugely beneficial to the development of skills in these groups. We continue to look for interested candidates from our junior ranks, so keep an eye out in 2023 or register your interest now with development@seha.com.au



Our first activity in the Junior Competition was providing umpire coaching on each field at the first round where the junior clubs all come together at a single venue. This was well-received and will be continued again next season.

Our Whistle Warrior courses were once again well attended with several clubs taking advantage to have their beginner umpires get started in a consistent manner. I commend these sessions to all of our constituent clubs as a way to get the grass roots umpiring going in your club.

We also developed and ran Beginner and Intermediate Q&A sessions, which were well attended and will be continued next season.

Development of our technical officials continued in the Senior Women's competition and also at State Championships. A gap has been identified to provide a pathway for interested people to commence learning the role of a technical official, starting with work as a judge.

It was really pleasing to see umpires who have come through the junior competition umpiring in the SEHA Senior Women's competition with a few taking active part in semi-finals, finals and grand finals. We are also seeing our juniors being invited onto U18 umpiring panels. The efforts of our clubs and the association in developing officials continues to bear fruit. The downside was our Women's Premier

division which continued to lack sufficient umpires for 2 games on a Saturday. Let us hope that the move of SEHA Prem to Sunday's will make it easier to find suitable qualified umpires for these games.

Thank you to all of those officials (umpires, umpire coaches, player coaches, managers and technical officials who put their hand up to support SEHA this year or made themselves available for NSW Hockey. Your efforts continue to show that SEHA supports hockey both locally and further afield

This year saw several of our technical officials taking on roles at State and National championships. Well done to Jodie McIntosh and Carolyn Davies.

Our Centre of Development Program (COD) for u13 and u15s helped the association bounce back from post COVID stall showing very healthy numbers culminating with the Regional Challenge in Newcastle. Most of these new entry players continued into our representative program and went to Canberra carnival on the June long weekend. This summer we are running COD at Cintra and Kyeemagh with all time high total registrations at 119 (2022-23).

Notable achievements that I am aware of this year include (apologies to anyone I have missed):

Will Brine and Scarlet Thuell were accepted to the Hockey NSW Emerging Talented Officials Program (ETOP) for umpiring

Scarlet Thuell at the U18 Girls State Championships panel

Congratulations Victoria Campbell, Marley Seebacher and Tom Kepert – new Community umpire accreditations.

UNSW HC also accredited some Community umpires – great work Hugo (I don't have any names to share with you all)

Thanks to our panel of committed umpire coaches: Luke Fleming, Kath Calokerinos, Marilyn Brown, Jodie McIntosh, Alison Banks, Alex Withey, Lindesay Brine, Kevin Margetson (Sutho), Peter Bestel, Malik Rasool, Chris Thuell and Debbie Dodd.

We conducted Level 1 coaching workshop at Daceyville and Level 2 course attended by our Luke Fleming Adrian Jones and Kathy Calokerinos

We are always looking for people willing to be part of our development team in all areas of development (especially Team Coaches), so if you would like to be part of our team, know of anyone that we could approach or have an idea or area that needs further action at association level, please contact the Development team at development@seha.com.au.

Look forward to having another bumper season for everyone in 2023!

Debbie Dodd

SEHA Development Director

6.1. Junior Umpire Development Report

After the disappointment of the sudden end to the 2021 season, in 2022 we experienced a full season from trials to State Championships, carnivals and a full final series. This was the first full season for 2 years and our junior umpires certainly made the most of it.

Early in the season it was great to see a new crop of volunteer umpires starting at the early season trials, and it was great to see these umpires develop over the period, attending whistle warrior workshops, and umpiring club games paired with more "senior" junior umpires.

We also saw our junior umpires take part in carnivals and state championships over the season, which was great to see. Some of our emerging junior umpires were accredited at carnivals during the season, while others were accredited at regular season games after some coaching and feedback. It was great to see the development of our junior umpires over the season: congratulations to all our umpires who were selected for state championships, and congratulations to all our umpires who gained their accreditation this year.

I was also pleased to see the commitment and professionalism shown by all of our junior umpires during the final's series for SEHA, and also in the Sydney Metro comp. Once again, we managed to umpire nearly all U11-U15 games using SEHA junior umpires. They all did a great job and managed their games very well.

As we look to 2023, we will once again hold whistle warrior sessions (won't we, Deb!), while also planning additional development sessions for our emerging umpires to support development via State Championships and onto the Hockey NSW Emerging Talented Officials Program, which mirrors the Accelerated Athlete Program for players. As always, we will work to ensure our enthusiastic junior umpires have plenty of opportunities to develop and perform in carnivals and championships.

My thanks to all the Clubs and junior umpires for their commitment to learning and umpiring in 2023. We look forward to unveiling our plans for 2023 early next year!

Lindesay Brine

Junior Umpire Coordinator

6.2. SEHA Centre of Development Program Participants

(U13-U15) Cintra and Kyeemagh (8 weeks)

Our Regional Participation Coordinator Andy van Pelt led the Centre of Development 8 week program over last summer for u13s and u15s who then play as metro central eagles, getting a great hockey experience at Regional Challenge Newcastle, in late February 2022. Participation in this program peaked to a new high in November this year



107 (2020-21)

86 (2021-22) – last summer post COVID shutdown registrations dropped

118 (2022-23) – a new all time high

Thanks to our amazing SEHA COD Coaches that support this program including: Katrina Cochrane, Bella Sandy, Luke Fleming, Adrian Jones, Kai Jones, Kathy Calokerinos, Wade Johnson, Allison Yeoland, Jenny Avery, Phil Sams, Brad Goodridge.



Allison, Amelia
 Ancher, Eva
 Armstrong, Macey
 Armstrong, Zali
 Barker, Mitchell
 Beaumont, Aurora
 Boardman, Ivo
 Broadbent, Charlie
 Bush, Abigail
 Bush, Imogen
 Callan, Keela
 Campbell, Claire
 Campbell, Victoria
 Carveth, Dougie
 Chandler, Bo-Jun
 charlton, Connor
 Chen, Sophia
 Choy, Ethan
 Cohen, Declan
 Conway, Amelia
 Conway, Charlotte
 Cooper, Miki
 Dandy, Frederick
 Davey, Annabelle
 Derrick, Sebastian
 Dimmock, Jai
 Doyle, Aaron
 Doyle, Jeremy
 Drysdale, Connor
 Duddy, Alice
 Duggineni, Nikeeta
 Easson, Amelia
 EDGECOMBE, ASHA
 Elliott, Jasmine
 Errington, Frances
 Erwin, Jessica
 Everett, Mark
 Faundez-Rebeiro, Alegria
 Finlayson, Cody
 Forchert, Riley

Fordham, Ashton
 Fowler, Erin
 Fung, Felix
 Giampaolo-Ferguson, Alessandra
 Goodridge, Airley
 Grace, Zara
 Haddock, Alexandra
 Hammond, Harrison
 Hanton, Olive
 Heaney, Lauren
 Heathcote, Oliver
 Hutchings, Hannah
 Hutchings, Madeline
 Huxley, Jemima
 Ito-Mason, Hugo
 Jacques, Jayden
 Jarvis, Ciara
 Jarvis, Lily
 Johnston, Frankie
 Jones, Jorjie
 Jones, Zachary
 Kale, Sidharth
 Kelly, Mya
 Kennedy, Vivienne
 Kepert, Anna
 Kirton, Marcus
 Knox, Edel
 Kohen, Amber
 Laney, Harry
 Lette, Rhys
 Lewis, Madeline
 Lloyd, Sophie
 Mansfield, annabelle
 Mao, Caleb
 Martin, Ana
 Miles, Saskia
 Murphy, Ella
 Nelson, Leo
 Nelson, Thomas

Netting, Adelaide
 North, Phoebe
 Oh, Zahra
 OHora, Isabella
 Reed, Cameron
 Rivers, Audrey
 Roxburgh, Annabelle
 Roxburgh, Eloise
 Ryan, Emily
 Sabey, Nicholas
 Sakoulas, Anastasia
 Sardelic, Max
 Scally, Ashton
 Seebacher, Lilli
 Shaw, Archer
 Shepherd, Alby
 Simpson, Piper
 Srdic, Emilie
 Steiner, Adeline
 Steiner, Oscar
 Stuetz, Kai
 Tamir, Ella
 Tang, Jared
 Taylor, Lachlan
 Taylor, Nate
 Taylor, Oscar
 Tordoff, Tilda
 Turnbull, Brooklyn
 Turner, Lilian
 Ulbrich, Dylan
 Walsh, Mary
 Walsh, Niamh
 Walsh-Sams, Aislinn
 Walsh-Sams, Aoife
 Weatherall, Jessica
 Welsh, Rhys
 West, Emily
 Williams, Tara
 Worsley, Camille

6.3. COD Regional Challenge at Newcastle

The Hockey NSW Regional Challenge was held in late February at the Newcastle Hockey Centre. This is where the u13s and u15s who participated in the summer COD program come together across all regions in the state to play games for three days. All involved had a great time!



7 SEHA REPRESENTATIVE DIRECTOR'S REPORT

Junior field season

The 2022 season has been the first season in three years where all our junior age groups were able to complete their rep season. We had one carnival cancelled for the U/13 boys due to extreme weather but we will take that compared to the trials and tribulations of the previous two years.

We were able to select 12 teams immediately after the trials in March. Additionally, we were able to form an additional U/13 boys team and an additional U/13 girls team (who played at the Canberra carnival, but not State Championships).

This gave us the same amount of team as last year, but it is always a lot more work for administrators when teams cannot be formed immediately after the trials. I would particularly like to thank Phil Sams and Tara Taylor for their assistance during the process of forming these two additional teams.

Our U/11 boys and girls teams travelled to Tamworth for the York Cup and Kim Small Shield for the first time since 2019 – a great milestone for all our youngest rep players.

Thank you to all our volunteers – coaches, selectors, and managers for their commitment to Sydney East Rep Hockey. In particular, Katrina Cochrane, Adrian Jones, Jenny Avery and Kathy Calokerinos who each coached two teams across multiple age groups. Thanks very much also to Phil Sams managed two teams in 2022.



Picture: SEHA Rep Trials 2022

Open field season

The Sydney East Open Rep Program has been improving steadily since 2019 when it was at a very low ebb, but there is a lot more that needs to be done.

This year we again had a mens and a womens team compete in Open State Championships. In 2022 the championships were both in regional areas for the first time in many years – which normally makes it harder to attract players, but I think it was a sign of the improvement in the program that we were able to attract a group of committed players for each team.

The quality of our teams still needs to improve. In the teams we have a talented group of younger players who are competing against teams with vastly more experience. This experience is what results in success at Open State.

The most important priority in our opens team is to secure the highest quality coaches available. To attract new coaches in 2022, we published an expression of interest to attract coaches with current experience coaching our top opens players at the club level. This was to include a significant increase in cost for Sydney East – commensurate with the funding available from competing organisations, but this strategy was not effective as we attracted no new coaches.

Additional administrative and selection support would also be conducive to a stronger opens program.



Women's masters season

Coming under the Representative Director's overall responsibility is the women's master's program, which is managed in full by Carolyn Davies, SEHA's women's masters convenor.

2022 was the first time in 3 years we had a full SWHL masters season and Masters Women State Championships, which took place for Sydney East in Tamworth and Armidale.

Mens masters season

Sydney East currently has one team in its men's masters program – an Over 50's team that played at the State Championships in Bathurst in March 2022.

Sydney East is actively working to increase this footprint in men masters – in line with the NSW Mens Masters decision to not accept state championship nominations from Sydney Masters Hockey in 2023, which has been the dominant organiser of mens masters rep hockey in greater Sydney.

Sydney East Rep Hockey would highly value a contribution from our mens masters members to arrange for teams under a Sydney East Mens Masters banner.

2021 Indoor season

The 2021 indoor state championships season took place in January and February 2022 after being rescheduled from November and December 2021. It goes without saying that playing junior sport in January is non-ideal due to families having other priorities, Couple this with the massive Omicron COVID wave that took place in January, and it was a recipe for a very difficult season.

Despite this, we were able to enter a team in each junior age group, and an open womens team. In another positive development for indoor hockey, Sydney Indoor Hockey and Northern Sydney and Beaches Hockey Association launched their inaugural Greater Sydney Cup indoor carnivals which provide an excellent opportunity for our rep teams to develop their skills.

Equipment

We have continued to work towards sourcing new goalkeeper smocks as our current supply is not sufficient due to our growth in teams. We have had some difficulty identifying an appropriate supplier, but work on this goal continues.

Looking ahead to 2023

The SEHA rep committee is in desperate need of greater volunteer involvement in 2023. My work commitments are increasing and I will not be able to commit as much time to SEHA as I have done over the past 5 years.

While SEHA is very appreciative of its great coaches, managers and selectors that put their hand up each year – a larger core committee would provide greater support to the program. It would also de-risk the program from its current concentration of knowledge about the program.

SEHA has made considerable advances in the way it manages the program – such as the use of the website and SEHA revolutionise system to communicate information to stakeholders and arrange trials. This has made the core tasks we do much more manageable. Many of the templates for the web pages and emails only require minimal changes each year now they are established.

Please contact repconvenor@seha.com.au if you would like to assist – even the smallest amount of time can be put to use. This support will be particularly valuable in the open rep part of the program.

Chris Thuell

Director Representatives

7.1 SEHA Junior Field Teams 2022

Sydney East Hockey Association U/11 Girls Team 2022	Sydney East Hockey Association U/11 Boys Team 2022
<p> Bekele Cochrane Brooklyn Turnbull Ella Murphy Ella Whitehall Clancy Norris Erin Parmenter Eva Marris Jemima Huxley Mackenna Turnbull Rosie Fung Maeve Ruggeri Annabel Armstrong Charlotte Heathcote Chiara Phan </p> <p> Coach: Kathy Calokerinos Manager: Anna Turnbull </p>	<p> Alby Shepherd Archer Shaw Connor Charlton Francis Neild Javier Tungul Joshua Ratcliffe Lachlan Taylor Lorcan Walsh-Sams Charlie Broadbent Sidharth Kale William Lloyd Cameron Reed Thomas Colquhoun Oliver Heathcote </p> <p> Coach: Jenny Avery Manager: Phil Sams </p>

2022 YORK CUP & KIM SMALL SHIELD

Tamworth Hockey Association



Under 11 Sydney East Boys

Back Row: Jen Avery (Coach), Francis Neild, Alby Shepherd,
Connor Charlton, Oliver Heathcote, Sidharth Kale, Lachlan Taylor, Phil Sams (Manager);
Front Row: Lorcan Walsh-Sams, William Lloyd, Javier Tungul, Cameron Reed, Joshua Ratcliffe,
Archer Shaw, Charlie Broadbent, Thomas Colquhoun

SEHA
SYDNEY EAST HOCKEY ASSOCIATION

2022 YORK CUP & KIM SMALL SHIELD

Tamworth Hockey Association



Under 11 Sydney East Girls

Back Row: Kathy Calokerinos (Coach), Jemima Huxley, Ella Whitehall, Erin Parmenter,
Annabele Armstrong, Brooklyn Turnbull, Charlotte Heathcote, Anna Turnbull (Manager);
Front Row: Clancy Norris, Eva Marris, Bekele Cochrane, Rosie Fung, Chiara Phan,
Maeve Ruggeri, Ella Murphy, Makenna Turnbull

SEHA
SYDNEY EAST HOCKEY ASSOCIATION

<p>Sydney East Hockey Association U/13 – 1 Boys Team 2022</p> <p>Aaron Doyle Ashton Fordham Aurelien Coulet Dylan Ulbrich Hamza Kanawati Harrison Hammond Jai Dimmock Mark Everett Mitchell Barker Nicholas Sabey Oscar Taylor Rhys Welsh Sebastian Derrick Xavier Blanch</p> <p>Coach: James Fordham Manager: Roland Hammond</p>	<p>Sydney East Hockey Association U/13 – 2 Boys Team 2021</p> <p>Xavier Blanch Ivo Boardman Kai Stuetz Nate Taylor Ivo Boardman Eduard Dekker Dan Shawcross Leo Nelson Declan Cohen Charley Dawson Connor Drysdale Blake Bestel Lorcan Walsh-Sams Cameron Reed Luke Giffney Charlie Broadbent</p> <p>Coach: Kathy Calokerinos & Jenny Avery Manager: Flavia Morello</p>
--	--

2022 FIELD STATE CHAMPIONSHIPS

Hockey New South Wales



Sydney East Under 13 Boys Division 1

Back Row: Roland Hammond (Manager), Mark Everett,
Harrison Hammond, Oscar Taylor, Nicholas Sabey, Aaron Doyle, James Fordham (Coach);
Front Row: Mitchell Barker, Dylan Ulbrich, Ashton Fordham, Rhys Welsh, Xavier Blanch, Jai Dimmock,
Aurelien Coulet; Not Pictured: Sebastian Derrick, Hamza Kanawati




2022 FIELD STATE CHAMPIONSHIPS

Hockey New South Wales



Under 13 Sydney East Division 4

Back Row: Flavia Morello (Manager), Daniel Shawcross,
Declan Cohen, Luke Giffney, Kai Stuetz, Leo Nelson, Blake Bestel, Jenny Avery (Coach);
Front Row: Kathy Calokerinos (Assistant Coach), Nate Taylor, Lorcan Walsh-Sams, Connor Drysdale,
Charley Dawson, Eduard Dekker, Charlie Broadbent, Ivo Boardman, Cameron Reed




<p>Sydney East Hockey Association U/13 – 1 Girls Team 2022</p> <p>Addison Wilson Alessandra Giompaolo-Ferguson Anna Kepert Aoife Walsh Sams Ciara Jarvis Claire Campbell Emily Ryan Kiandra Brook Lauren Heaney Lilli Seebacher Miki Cooper Siala Cochrane Tara Williams Adelaide Netting</p> <p>Coach: Katrina Cochrane Manager: Justine Smith & Lisa Jarvis</p>	<p>Sydney East Hockey Association U/13 – 2 Girls Team 2022</p> <p>Adelaide Netting Annabelle Davey Asha Edgecombe Camille Worsley Hanna Tyler-Stewart Mischa Glassford Sophie Lloyd Zahra Oh Ella Tamir Jemina Huxley Emily West Ava Fornasier Audrey Rivers Mia Samaras Ana Martin Anabelle Roxburgh Erin Parmenter</p> <p>Coach: Kathy Calokerinos & Jenny Avery Manager: Mark Oh</p>
--	---





SEHA U/13 -2 girls (Moorebank Carnival team)

<p>Sydney East Hockey Association U/15 – 1 Girls Team 2022</p> <p>Airley Goodridge Charlotte Sainsbury Clementine Gerber Daisy Martin Emilie Srdic Janine Southwell Jessica Weatherall Liliana Turner Madeleine Tudehope Molly Robinson Pia Martin Piper Simpson Sofia Bray Zara Matthews</p> <p>Coach: Katrina Cochrane Manager: Sarah Robinson</p>	<p>Sydney East Hockey Association U/15 – 2 Girls Team 2022</p> <p>Addison Wilson Aislinn Walsh Sams Amy Forchert Ayisha Travis Ella Godward Keela Callan Lily Jarvis Madeline Hutchings Madeline Kralj Saskia Miles Siala Cochrane Tilda Tordoff Victoria Campbell Sophia Chen</p> <p>Coach: Cindy Goodridge Manager: Barbra Godward</p>	<p>Sydney East Hockey Association U/15 – 3 Girls Team 2022</p> <p>Allegra Martin Amelia Cook Aoife Walsh-Sams Aurora Beaumont Ella Jewell Frankie Johnston Jessica Erwin Lilah Randall Olive Hanton Niamh Walsh Claire Campbell Isha Mane Clodagh Bookalil Rosemary Graham Sofia Alvaro</p> <p>Coach: Shannon Campbell Manager: Phil Sams</p>
--	--	---



2022 FIELD STATE CHAMPIONSHIPS

Hockey New South Wales



Under 15 Sydney East 2 Division 4

Back Row: Ella Godward, Madeline Hutchings, Keela Callan, Amy Forcherl, Saskia Miles, Lily Jarvis, Victoria Campbell, Aislinn Walsh-Sams;
 Front Row: Barbra Parker (Manager), Siala Cochrane, Addison Wilson, Madeline Kralj, Sophia Chen, Ayisha Travis, Tilda Tordoff, Cindy Goodridge (Coach)




2022 FIELD STATE CHAMPIONSHIPS

Hockey New South Wales



Under 15 Sydney East 3 Division 4

Back Row: Shannon Campbell (Coach), Sofia Alvaro, Frankie Johnston, Aoife Walsh-Sams, Lilah Randall, Allegra Martin, Amelia Cook, Phil Sams (Manager);
 Front Row: Clodagh Bookallil, Niamh Walsh, Jessica Erwin, Olive Hanton, Claire Campbell, Ella Jewell, Rosemary Graham, Isha Mane, Aurora Beaumont




**Sydney East Hockey Association
U/15 Boys Team 2022**

Brayden Brook
Elio Fornasier
Felix Fung
Hugo Moore
Jack Laney
James Reynolds
Jarrod Holmes
Joshua Bourke
Luke Broadbent
Riley Dimmock
Riley Forchert
Tuomo Solness
Zac Jones

Coach: Adrian Jones
Manager: Marcia Scally



<p>Sydney East Hockey Association U/18 – 1 Boys Team 2022</p> <p>Coady Stone Henry Tyree Jaylen Els Kai Jones Max Yeoland Morgan Veleski Orlando Travis Oskar Smith Samuel MacBeath Toby Mallon Victor Coulet William Brine Zack Arambewela Zane Goodridge Xavier Scally</p> <p>Coach: Adrian Jones Manager: Chris & Kerry Stone</p>	<p>Sydney East Hockey Association U/18 – 2 Boys Team 2022</p> <p>Aidan Najdzion Brayden Wilson Curtis Glassford Jack Ryan Marley Seebacher Mitchell Vergos Oliver Tordoff Reece Rousell Felix Fung Hugo Moore Brayden Brook Thomas Brennan James Reynolds Henry Yeoland</p> <p>Coach: Wade Johnson Manager: Sean Glassford</p>
--	---

2022 FIELD STATE CHAMPIONSHIPS

Hockey New South Wales



Under 18 Sydney East Division 1

Front Row: Adrian Jones (Coach), Jaylen Els, Kai Jones, Coady Stone, William Brine, Zane Goodridge, Oskar Smith, Orlando Travis;
 Back Row: Xavier Scully, Victor Coulet, Zack Arambewela, Max Yeoland, Henry Tyree, Morgan Veleski, Samuel MacBeath, Kerry Stone (Manager)




2022 FIELD STATE CHAMPIONSHIPS

Hockey New South Wales



Under 18 Sydney East Division 3

Back Row: Wade Johnson (Coach), James Reynolds, Mitchell Vergos, Reece Rousell, Brayden Wilson, Thomas Brennan, Marley Seebacher, Aidan Najdzion;
 Front Row: Curtis Glassford (C), Felix Fung, Brayden Brook, Henry Yeoland, Oliver Tordoff, Jack Ryan, Hugo Moore, Sean Glassford (Manager)




Sydney East Hockey Association U/18 – 1 Girls Team 2022	Sydney East Hockey Association U/18 – 2 Girls Team 2022
<p> Abbey Roberts Abbie Sen Angelina Foley Ashleigh Sperring Dakota Thuell Darcey Babbage Grace Matthews Ilse Knottenbelt Lillian (Billy) Pritchard Megan Keller Molly Busch Phoebe Cox Ruby Di Somma Sienna Da Silva Sophia Jones </p>	<p> Amy Oades Beatrix Rivers Cate Heath Ella Fogarty Gabrielle Dietz Hannah Monaghan Riley Kelleher Sarah McPhail Scarlett Blanch Zoe Newman Maddie Welsh Jessica Patterson Victoria Jorden Jana Markopoulos </p>
<p> Coach: Andrew Jones Manager: Lorna Burton </p>	<p> Coach: Kathy Calokerinos & Jenny Avery Manager: Narelle Monaghan </p>

2022 FIELD STATE CHAMPIONSHIPS

Hockey New South Wales



Under 18 Sydney East Division 2

Front Row: Ilse Knottenbelt, Dakota Thuell, Grace Matthews,
 Sophia Jones, Megan Keller, Ashleigh Sperring, Lillian (Billy) Pritchard, Andrew Jones (Coach);
 Front Row: Lorna Burton (Manager), Darcey Babbage, Ruby Di Somma, Abbie Sen, Angelina Foley,
 Abbey Roberts, Sienna Da Silva, Molly Busch; Not Pictured: Phoebe Cox




2022 FIELD STATE CHAMPIONSHIPS

Hockey New South Wales



Under 18 Sydney East Division 3

Back Row: Gabrielle Dietz, Jana Markopoulos, Riley Kelleher,
 Scarlett Blanch, Zoe Newman, Beatrix Rivers, Ella Fogarty, Kathy Calokerinos (Coach);
 Front Row: Jenny Avery (Assistant Coach), Jessica Patterson, Hannah Monaghan, Victoria Jorden,
 Amy Oades, Cate Heath, Sarah McPhail, Maddie Welsh; Not Pictured: Narelle Monaghan (Manager)




7.2 SEHA Open Field Teams 2022

Sydney East Hockey Association Open Women Team 2022

Scarlett Thuell
Destiny Peris
Annemijn Flokstra
Alexis Jackson
Megan Keller
Tegan Neowhouse (c)
Chelsea Da Silva
Sarah Brine (vc)
Dakota Thuell
Ilse Knottenbelt
Riley Kelleher
Sarah McPhail
Sienna Da Silva
Angelina Foley

Coach: Tim Kelly
Manager: Cassie Keller



**Sydney East Hockey Association
Open Men Team 2022**

Toby Mallon
Patrick Vastani
Miles Davis
Timothy Pritchard
Orlando Travis
Coady Stone
Tom Vastani
Harrison Benn
Oliver Benn
Max Yeoland
Robert Frew
Matthew Thompson
Darcey Cast

Coach: Wade Johnson
Manager: Chris Stone



7.3 SEHA Masters Field Teams 2022

**Sydney East Hockey Association
Men's Masters O/50 Representatives
Bathurst 2022**

Les Wilde (GK)
Rob Howard
Paul Collins
Tony Furner (VC)
Sean Glassford (C)
Jason Foote
David Richardson
David Dart
Scott Dreyer
Henry Twaddle
Kevin Twaddle
Andrew Jones
Mick Nair
Glynn Daunt
Rob Aqualina
Simon White

Coach - Tony King
Umpire: Curtis Glassford



**Sydney East Hockey Association
Womens Masters 0/34 Division 1
Armidale 2022**

Laura Anggadi
Rachael Borg
Kathleen Chua
Sarah Dredge
Sonya Finlayson
Cindy Goodridge
Annie Hope
Ingrid Marchant
Kylie Norris
Danica Oades
Carolyn Pitt
Julie Prolov
Nicola Skinner
Genevieve Whitlam

Coach: Cindy Goodridge
Manager: Kylie Norris



**Sydney East Hockey Association
Womens Masters 0/34 Division 3
Armidale 2022**

Maria Bradley
Kathy Calokerinos
Jane Cordin
Elizabeth Gray
Stephanie Ingster
Sonya Jenkins
Catherine MacBeath
Tricia McCabe
Emily Moylan
Sharon Parker
Lisa Rothwell
Wendy Salkeld
Beth Symonds
Meredith Wells

Coach: Kathy Calokerinos
Manager: Yolanda de Winter



**Sydney East Hockey Association
Womens Masters 0/34 Division 4
Armidale 2022**

Kerryn Byers
Lorelle Byers
Jeanette Churchill
April Cooper
Robin Craig
Krystine Dempster
Liesel Deveney
Julie Foreman
Judy Jones
Karen Morris
Jillian Parkin
Carol Ann Perry
Roisin Smit
Karla Taylor

Manager: Jeanette Churchill



**Sydney East Hockey Association
Womens Masters 0/40 Division 2
Tamworth 2022**

Alyson Ashe
Amanda Bock
Carolyn Davies
Catherine Eke
Pixie Fuhrmeister
Kerrie-ann Gudmunson
Liz Irvin
Chaelene Phillips
Anne Redman
Marcia Scally
Goose Smallfield
Eve Wilson



**Sydney East Hockey Association
SWHL Womens Masters 2022
Division 1**

Alysha Brady
Laura Anggadi
Rachael Borg
Tracy Bradford
Kathleen Chua
Katrina Cochrane
Sonya Finlayson
Cindy Goodridge
Annie Hope
Ingrid Marchant
Kylie Norris
Danica Oades
Carolyn Pitt
Julie Prolov
Lisa Roach
Mel Rosser
Nicola Skinner
Johanna Sonneveldt
Genevieve Whitlam

Manager: Kylie Norris



**Sydney East Hockey Association
SWHL Womens Masters 2022
Division 2**

Alyson Ashe
Amanda Bock
Carolyn Davies
Catherine Eke
Pixie FUHRMEISTER
Ruth Glasgow
Gail Greer
Kerrie-ann Gudmunson
Kate Kelly
Liz Irvin
Danica Oades
Chaelene Phillips
Anne Redman
Sue Roberts
Marcia Scally
Goose Smallfield
Eve Wilson

Manager: Sharon Knight

**Sydney East Hockey Association
SWHL Womens Masters 2022
Division 3**

Maria Bradley
Madonna Barrett
Kathy Calokerinos
Stephanie Ingster
Susan Jamieson
Sonya Jenkins (Capt)
Tricia McCabe
Emily Moylan
Carol Murphy
Sharon Parker
Joanne Scanlon
Beth Symonds
Linda Walsh
Meredith Wells
Stacey Williams

Manager: Yolanda de Winter



**Sydney East Hockey Association
SWHL Womens Masters 2022
Division 4**

Sue Brady
Lorelle Byers
Jeanette Churchill
April Cooper
Robin Craig
Krystine Dempster
Liesel Deveney
Julie Foreman
Judy Jones
Karen Morris
Jillian Parkin
Carol Ann Perry
Roisin Smit
Karla Taylor
Ruth Standring
Sharon Westermeyer

Manager: Laura Jones



7.4 SEHA Indoor Teams 2021

Sydney East Hockey Association U/13 Boys Indoor Team 2021

Felix Fung
Aaron Doyle
Rhys Welsh
Oscar Taylor
Mitchell Barker
Ethan Choy
Connor Charlton
Lorcan Walsh-Sams
Ashton Fordham
Jeremy Doyle

Coach: James Fordham
Manager: Paula Farrell



**Sydney East Hockey Association
U/13 Girls Indoor Team 2021**

Emily Ryan
Aislinn Walsh
sams
Airley Goodridge
Sophia Chen
Miki Cooper
Allegra Martin
Emilie Srdic
Lily Jarvis
Jessica Weatherall
Lilli Seebacher
Siala Cochrane

Coach: Brad Goodridge
Manager: Justine Smith



**Sydney East Hockey Association
U/15 Boys Indoor Team 2021**

Jack Ryan
James Reynolds
Oskar Smith
Aidan Najdzion
Felix Fung
Zack Arambewela
Zara Matthews
Molly Robinson

Coach: Wade Johnson
Manager: Tracey Najdzion



**Sydney East Hockey Association
U/15 Girls Indoor Team 2021**

Angelina Foley
Riley Kelleher
Madeleine Tudehope
Molly Robinson
Monique Turner
Liliana Turner
Beatrix Rivers
Zara Matthews
Piper Simpson
Sofia Bray
Sarah McPhail

Coach: Katrina Cochrane & Guy Mannering
Manager: Marnie McConnell



**Sydney East Hockey Association
U/18 Boys Indoor Team 2021**

Kai Jones
Xavier Scally
Zack Arambewela
Rian Surti
Max Yeoland
William Brine
Jett Leong
Zane Goodridge
Martin Pedersen-Clarke
Orlando Travis
Aidan Najdzion

Coach: Adrian Jones
Manager: Marcia Scally



**Sydney East Hockey Association
U/18 Girls Indoor Team 2021**

Chelsea Da Silva
Sienna Da Silva
Lillian Pritchard
Ilse Knottenbelt
Megan Keller
Shannae Lawrence
Zoe Newman
Grace Matthews
Zara Matthews

Coach: Tegan Neowhouse
Manager: Cassie Keller



**Sydney East Hockey Association
Open Women Indoor Team 2021**

Marcia Scally
Cate Heath
Annemijn Flokstra
Tegan Neowhouse
Madeleine Scott
Destiny Peris
Caitlin Wasserman
Megan Keller
Lillian Pritchard

Coach: Marcia Scally
Manager: Cassie Keller



**Sydney East Hockey Association
Masters Women 1 Indoor Team 2021**

Kiah Hunter
Nicole Curtis
Lisa Roach
Amanda Meech
Louise Maraun
Sheridan Gorman
Leanne Croft
Jessica Brimble
Alex Lupton
Nicole Allsop

Coach: Alex Lupton
Manager: Lisa Roach



**Sydney East Hockey Association
Masters Women 2 Indoor Team 2021**

Marcia Scally
Lisa Rothwell
Carolyn Davies
Eve Wilson
Fiona Telfer
Laurel Muldoon/Gadd
Belinda Manning
Trina Dooley
Sonya Finlayson

Manager: Eve Wilson & Carolyn Davies

8 SEHA REPRESENTATIVE PLAYERS 2022

Sydney East 2022 Australian Representatives

Hockeyroos

Kaitlin Nobbs
Jocelyn Bartram

Sydney East 2022 Australian Indoor Representatives

Junior National Indoor Squad

Tegan Neowhouse
Destiny Peris

Sydney East 2023 Australian Womens Masters Representatives

Womens Over 34's

Annie Hope

Sydney East
2020-21 NSW & Squads Representatives
Juniors

	U/13 girls team 2022 Miki Cooper Addison Wilson
U/15 boys team 2022 James Reynolds	U/15 girls team 2022 Pia Martin Molly Robinson Liliana Turner
U/18 boys squad (2022 AAP Squad) Kai Jones Jett Leong Oskar Smith Coady Stone Henry Tyree Toby Mallon Orlando Travis	U/18 girls squad (2022 AAP Squad) Sienna Campese Ruby Di Somma Jana Markopoulos
U/18 boys team 2022 Jett Leong Oskar Smith Henry Tyree Toby Mallon Orlando Travis	U/18 girls team 2022 Megan Keller Grace Matthews

U/15 boys squad 2023	U/15 girls squad 2023
Brayden Brook Felix Fung Zac Jones	Miki Cooper Airley Goodridge Piper Simpson Emile Srdic Aislinn Walsh-Sams Jessica Weatherall Addison Wilson

Sydney East
2023 Hockey NSW
Athlete Acceleration Program (AAP) Squad Representatives

Boys	Girls
Kai Jones Toby Mallon Oskar Smith Coady Stone Orlando Travis Henry Tyree Max Yeoland	Phoebe Cox Sienna Da Silva Ruby Di Somma Jana Markopoulos Grace Matthews

Sydney East
2022-23 NSW & Squad Representatives
U/21

<p style="text-align: center;">U/21 Mens squad 2022</p> <p style="text-align: center;">Miles Davis Timothy Pritchard Keiran Brook Rashil Jetley</p>	<p style="text-align: center;">U/21 Womens squad 2022</p> <p style="text-align: center;">Tegan Neowhouse Lily Neilsen Destiny Peris</p>
<p style="text-align: center;">U/21 men team 2022</p> <p style="text-align: center;">Miles Davis Timothy Pritchard Rashil Jetley Toby Mallon Jett Leong</p>	<p style="text-align: center;">U/21 women team 2022</p> <p style="text-align: center;">Tegan Neowhouse Lily Nielsen</p>
<p style="text-align: center;">U/21 men squad 2023</p> <p style="text-align: center;">Matthew Thompson</p>	

Sydney East
NSW Pride Representatives 2022

<p style="text-align: center;">Men</p> <p style="text-align: center;">Miles Davis</p>	<p style="text-align: center;">Women</p> <p style="text-align: center;">Jocelyn Bartram Julia Bradley</p>
--	---

**Sydney East
2022 NSW Representatives
Womens Masters**

<p style="text-align: center;">Over 34's</p> <p style="text-align: center;">Annie Hope Kathleen Chua Laura Anggadi</p>	<p style="text-align: center;">Over 40's</p> <p style="text-align: center;">Katrina Cochrane</p>
<p style="text-align: center;">Over 55's</p> <p style="text-align: center;">Sonya Jenkins</p>	



Miles Davis - HNSW Pride debut 2022



Julia Bradley - HNSW Pride debut 2022

9 SEHA LIFE MEMERS

Congratulations to SEHA's first Life Member - Graeme Barnard.

Graeme has been a member of the Board since it's beginning in 2015 and was also on the working committee to establish SEHA as part of the Hockey NSW amalgamation association reforms.

A source of endless information, support and wisdom - Graeme has been Finance Director and then Juniors Director in addition to his 9 years as President for Bankstown Hockey. The association has been blessed to have his contribution and involvement and although he is taking a well earned rest we trust we will have the benefit of his experience for many years to come - well done!

He came over from Little Athletics' where he served as President for more than 10 years. His two children decided that they weren't interested in Athletics anymore and came over to Hockey back in 2007. Graeme came over as a Dad/Parent initially and started taking on committee roles in his club Bankstown, and in 2012 was voted in as President. He served as President for 9 years until 2021, when he relocated to Bathurst.

In that time, he turned the Club around from a Club which was struggling financially and could not attract players. Not only did he serve as President he was also Grounds Manager, Canteen Manager and Administration Manager. He was one of the many organisers to introduce "Come and Try Hockey" which attracted Juniors from local schools and other sports in the area. Graeme has also been a registered player that really enjoyed his time on the field.

Graeme has served on the Board of SEHA as Finance Director and recently as Juniors Director.



10 STRATEGIC PLAN

Sydney East Hockey Association Strategic Plan 2017 - 2022

Vision	SYDNEY EAST HOCKEY ASSOCIATION: CHAMPION THE GROWTH OF HOCKEY. Hockey NSW: Our vision is for Hockey NSW to be the leader on and off the field. Hockey Australia: • Consistent Australian team performance and team success at 14 benchmark events • Stronger business model by sustained profits through diversified revenue • Increased participation across all levels of hockey • Highest standard of governance across whole of sport.				
Purpose	SYDNEY EAST HOCKEY ASSOCIATION: FOSTER A SAFE AND INCLUSIVE ENVIRONMENT THAT PROMOTES PARTICIPATION AND DEVELOPS HOCKEY WITHIN THE SYDNEY EAST COMMUNITY. Hockey NSW: A sustainable and innovative organisation that provides an accessible sport of choice for everyone through a unified approach, leading the field with integrity, transparency and excellence. Hockey Australia: • To achieve success with Australian teams • To grow the game of hockey in Australia • To govern the game of hockey in Australia				
Strategic Pillar	1. PARTICIPATION	2. RELATIONSHIPS	3. OPERATIONS	4. PROMOTIONS & COMMUNICATIONS	5. FACILITIES
Objective	Attract new, retain existing and re-engage past people in hockey	Highly productive internal and external partnerships, networks and alliances	Strong finances, robust governance and effective management	Enhanced profile and increased engagement	Safe, quality and accessible facilities that support participation growth
Supporting Strategies	1. Create links between local schools and clubs to provide a player pathway 2. Identify opportunities to make it easier and more cost-effective for families to participate in hockey 3. Provide development pathway for players, coaches, umpires and officials 4. Explore new, modified and social formats to adapt to changing consumer preferences 5. Reignite interest in hockey from past players 6. Identify and remove participation barriers to attract new players of all ages, abilities and backgrounds 7. Develop volunteer recruitment & recognition activities	1. Actively engage and collaborate with affiliated clubs to achieve mutually beneficial outcomes 2. Foster and preserve relationships and, work collaboratively with: a. Hockey NSW b. Local Government Associations c. Local businesses d. Local schools and educational institutions e. Local community organisations f. State and Federal government departments and agencies (e.g. NSW Office of Sport) 3. Association strategy aligns with Hockey Australia and Hockey NSW 4. Represent affiliated clubs in providing feedback to HNSW	1. Create an effective association and board structure that supports strategy 2. Align association governance with relevant ASC Sport Governance Principles 3. Develop a culture of member protection that promotes a safe, fair and inclusive environment 4. Identify and fully utilise governance components of Revolutionise system 5. Identify opportunities to support club administration 6. Develop appropriate procedure manuals, guides, checklists and templates for key roles 7. Implementation of succession planning for all key roles including Board Directors.	1. Develop a communication matrix to identify key stakeholders, messaging content and communication medium 2. Identify members skilled in social media to develop social/digital strategy and drive member engagement 3. Communicate SEHA strategy on a page 4. Fully utilise all communication and engagement modules and elements of Revolutionise system 5. Identify opportunities to work collaboratively with clubs on promotions and communications 6. Identify technologies and opportunities to amplify engagement	1. Identify and target relevant grant and funding opportunities 2. Work with clubs on developing a future facility improvements and maintenance plan 3. Identify innovative options to grow facility footprint e.g. multipurpose, half-field

11 SEHA Affiliated Clubs Contacts



[Bankstown Sports Hockey Club](#)



[Bentstix Hockey Club](#)



[Briars Hockey Club](#)

Canterbury

Reevesby



[Eastcoast Dolphins Women's Hockey Club](#)



[Easts Hockey Club](#)



[Easts Women's Hockey Club](#)



[Esquires](#)



[Glebe District Hockey Club](#)



[Monterey Hockey Club](#)



[POHOGS](#)



[St George Randwick Hockey Club](#)



[UNSW Hockey Club](#)



Wests



[Sydney East Hockey Association](#)
administration@seha.com.au

