



ANNUAL REPORT 2021

Introduction

The Sydney East Hockey Association (SEHA) was formed in 2015 under the Hockey NSW restructure of associations in NSW. SEHA is the third largest association in the state based on membership and one of six associations in the Greater Sydney area and covers an area 400 sq. Km, taking in 12 local government areas, from the City, Glebe and Concord in the city/inner west, out to Bankstown in the south-west, down towards the Sutherland Shire in the south and back into Daceyville and the Eastern Suburbs. The association boasts almost 2000 players incorporating 15 affiliated hockey clubs, 13 schools and four synthetic turf fields and a few grass fields.

OUR REGION



SEHA conducts local junior (mixed and schoolgirls) and senior competitions and provides regional representative level hockey and development pathways for its members, to State Championship level, in field and indoor hockey, for juniors, opens, and masters, boys, girls, men and women.

Our members also play in other competitions noting our men's clubs play in the Sydney wide, Sydney Men's Opens and Masters Hockey competitions, and some women's teams play in the Sydney Women's Hockey League - Opens and Masters.

OUR VISION

CHAMPION THE GROWTH OF HOCKEY.

OUR MISSION

FOSTER A SAFE AND INCLUSIVE ENVIRONMENT THAT PROMOTES PARTICIPATION AND DEVELOPS HOCKEY WITHIN THE SYDNEY EAST COMMUNITY.

Contents

Introduction	1
OUR REGION	1
OUR VISION	1
OUR MISSION	1
Contents	2
1. PRESIDENT’S REPORT	4
1.1. Table 1 - SEHA member participation survey	7
1.2. SEHA Member Churn Rate Diagrams	7
1.3. SEHA COVID-19 Timeline 2021	8
1.4. SEHA Structure 2021	8
1.5. 2021 Our Office Bearers and Volunteers ...	9
2. GOVERNANCE DIRECTOR’S REPORT	10
3. Secretary’s REPORT	12
3.1. Board Meetings Attendance 2021	12
3.2. Board Director Terms History	12
3.3. Membership Profile.....	13
4. FINANCE DIRECTOR’S REPORT	14
4.1. Auditor’s Report	16
4.2. SEHA Balance Sheet 30 September 2021	17
4.3. SEHA Profit & Loss Statement 1 October 2020 to 30 September 2021	18
4.4. SEHA Profit & Loss Statement by Class - 1 October 2020 to 30 September 2021	19
4.5. Schedule of Fees 2021	22
5. SEHA WOMEN’S COMPETITION DIRECTOR REPORT	23
6. JUNIOR COMPETITION REPORT	25
6. DEVELOPMENT DIRECTOR REPORT	26

6.1.	Junior Umpire Development Report	28
6.2.	SEHA Centre of Development Program Participants (u13-u15) Cintra and Daceyville (8 weeks)	29
6.3.	COD Regional Challenge at Tamworth	28
6.4.	The Hockey Regional SEHA Schools Program	29
7.	SEHA REPRESENTATIVE DIRECTOR's REPORT	30
7.1.	SEHA Masters Men	32
7.2.	SEHA Masters Women's- SWHL Competition	33
7.3.	SEHA Junior Field Teams 2021.....	35
8.	SEHA Representative Honors	47
9.	Strategic Plan	0
10.	SEHA Affiliated Clubs and Contacts	56

Cover shot by CLICK FOCUS Millie

ABN No: 98 153 957 262

2015 - Incorporation Inc no:1500482

1. PRESIDENT'S REPORT

Play Watch and Love the Game with SEHA



On behalf of the Board of the Sydney East Hockey Association (SEHA), I am pleased to present the Annual Report 2021, including the audited financial statements showing a healthy operational surplus \$53,151, noting approximately \$27,000 is being held over for refunds and credits to be made in 2022 season arising from early abandonment of the season.

I am incredibly proud of our dedicated team of Board directors, our association volunteers, and the people that support us in clubs and our governing bodies. Together we are navigating the uncertainty of a once in a lifetime global pandemic with the government COVID-19 restrictions significantly impacting community sport once again.

SEHA proved to be resilient and ensured compliance with all governance requirements including, NSW Government Ministerial Health Orders with the guidance of our governing body Hockey NSW. Tough decisions were made mid season with our competition abandonment, reducing the number of rounds played, cancelling our representative program and heightened health and safety standards for individuals, clubs and venues in our region.

Our SEHA community stepped up to face all these challenges, SEHA embraced technology such as zoom to facilitate association wide communication (thanks to tech savvy Mia). We worked collaboratively with our clubs to focus on member retention and ultimately provide a safe environment for hockey allowing the return to the field of play. We ensured timely briefings direct to Club Presidents and members as developments and information became known (see COVID-19 timeline diagram 1.3).

We remained true to our mission and proudly served:

- Members - 1,916 registered playing members comprising (o18: 1237, u18: 637),
- Clubs - 15 affiliate Clubs and 7 non-affiliated clubs,
- Schoolgirls (Term 2) - 13 schools (around 800 schoolgirls in addition to our member base)
- Competition Teams - 30 women's teams, 46 junior teams, 62 schoolgirls teams
- Representatives Players – 180 juniors , 32 opens, 18 men's masters 64 women's masters

2021 Highlights and challenges:

- **The Game in Olympic Year-** When I reflect on the big picture this year, our sport was showcased in this Olympic year, raising its profile and giving us a reason to get excited and share our national pride at a time we were all in lockdown and couldn't play the game we love. It was great to see players from our region make it to the highest levels of hockey with Kookaburras: Dillan Martin, Kurt Lovett and Hockeyroos: Jocelyn Bartram, Kaitlin Nobbs. Greta Hayes (a homegrown Maroubra girl who I recall in edwha when she was u11).
- **The Culture** - Our sport was also in the media headlines for behaviours at national and state levels. This emphasized that while striving for high performance, we cannot do this by compromising our wellbeing, values and reputation. I know our Clubs and Association representative teams work hard to ensure that we have an inclusive culture and play the game in the spirit of good sportsmanship. This starts at the grassroots. The recent Independent Review

conducted by Hockey Australia and Hockey NSW will see the adoption of a number of recommendations in 2022 season.

- **Hockey NSW** – late this year saw the resignation of CEO David Thompson and CFO Karen Townsend whose leadership we greatly valued. Craig Beed has stepped up as Interim CEO until the role filled by March 2022. A number of director positions will also need to be filled. HNSW is navel gazing with its independent review looking at representative hockey and going forward with a strategic focus on safety, diversity and participation.
- **Membership retention / affordability focus** – membership numbers were restored to 2019 levels (pre Covid-19) with 7.3% increase from last year and our churn rate reduced to 15% compared to last year and churn rate of 42% (see Table 1.1 and 1.2).
- **A positive financial performance** positions SEHA well going forward to continue its operations, development and representative programs.
 - Affordability - Cognisant of the financial pressures on families SEHA fees will remain the same in 2022.
 - Last year Hockey NSW offered an incentive to members that registered by 18 July to also receive a HNSW fee component discount for 2021 season.
 - SEHA is a registered Active Kids Provider - families benefited from the HNSW – Active Kids Rebate (\$100 vouchers school age kids) program once again.
- The Board – SEHA is very fortunate to have the benefit of Lorelle Byers many years of administration experience. I greatly valued her sound advice. Our dedicated Board worked collaboratively over many late evenings to ensure the protection of the best interest of our members and clubs, not afraid to make tough decisions as needed.
- Governance - special acknowledgement to Director Mia Strecker –Reeves who is also our COVID-19 Safety Coordinator collaborating with all our Safety Officers across the association who ensured COVID-19 Safety Plan requirements for individuals, clubs and venues and our competition officials and club Marshalls for their oversight to ensure a safe competition.
- Competitions – sometimes it takes almost losing something to truly appreciate its value and role it plays in the community. Directors Tanya Arathoon and Graeme Barnard's leadership together with their committees in uncertain times was outstanding. It was great to see the return of the Schoolgirls competition in term2. We are very grateful to have been able to hold both our women's and junior competitions despite having to abandon in mid June.
- Our Representative Program managed by Director Chris Thuell conducted trials and announced teams, but unfortunately many were disappointed with the cancellation of State Championships. An expression of interest process was also conducted to ensure that no one was missed that was eligible for consideration for state selection for 2021.
- Facilities – SEHA lobbied Hockey NSW to raise the importance of resourcing expertise in the area of facility development to support venue owners with government grant applications.
 - St George-Randwick Hockey Club were successful in receiving a \$300,000 grant to upgrade Kyeemagh turf and amenities which was completed.
 - A joint SEHA / UNSW HC grant application to upgrade Daceyville lighting and turf has been submitted for decision in December. UNSWHC approached SEHA's assistance as grant applicants need to be an incorporated entity making UNSWHC and the universities not eligible to apply.
- Congratulations to all who achieved Representative honors as detailed in **section 8**.

- Development Programs led by Director Debbie Dodd include:
 - showcasing our dedicated team of umpires and sponsor with new look SEHA Rhino Mouthguard shirts; and umpire coaches and officials with distinctive branded SEHA bibs to ensure a professional look, are identifiable and for a safe environment for all.
 - utilized our competitions to facilitate development for coaches, officials and umpires
 - Andy van Pelt, RPC continuing the Schools Program (7 schools), and Centre of Development program for u13/u15s participation at Regional Challenge Tamworth (86 kids registered for 2021/22)
- Congratulations to Marilyn Brown awarded Hockey HA Life membership and to Andrew Jones HNSW Administration Volunteer Recognition Award 2021!
- Partners and Sponsors – we value XPress Promotions our merchandise partner, and our sponsor John Halkitis at Rhino Mouthguards.

This is only possible with the support of our exceptional volunteer base; our Board Directors, Convenors, Committees, Umpires, Officials, Coaches, Managers, Safety Coordinators and so many parent volunteers.

Finally, I feel so very fortunate to work with such a wonderful bunch of people who were so dedicated, thank you to Secretary Lorelle Byers and my fellow Directors Tanya Arathoon, Graeme Barnard, Mia Strecker-Reeves, Chris Thuell, Lisa Jarvis and Debbie Dodd for their teamwork, absolute commitment and resilience to deliver their portfolio in an extraordinary year!

Kathy Calokerinos
SEHA President

1.1. Table 1 - SEHA member participation survey

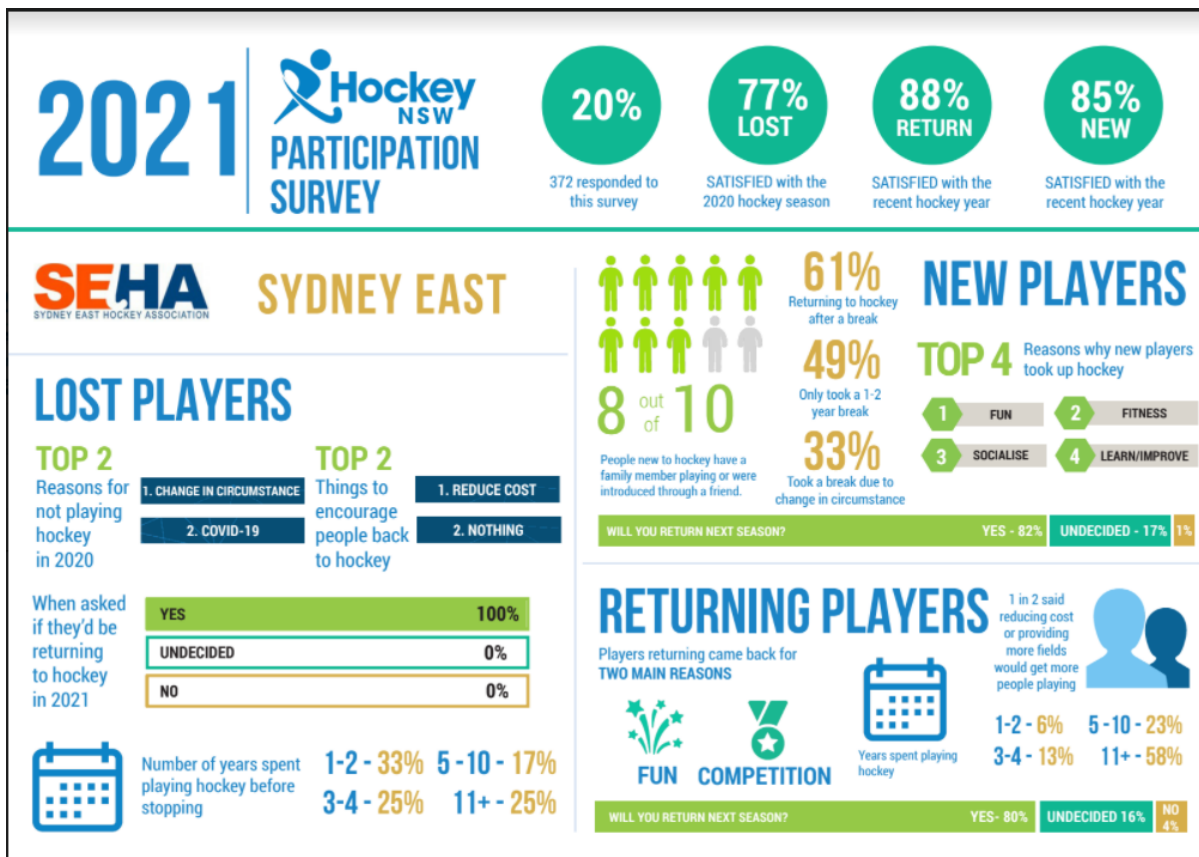
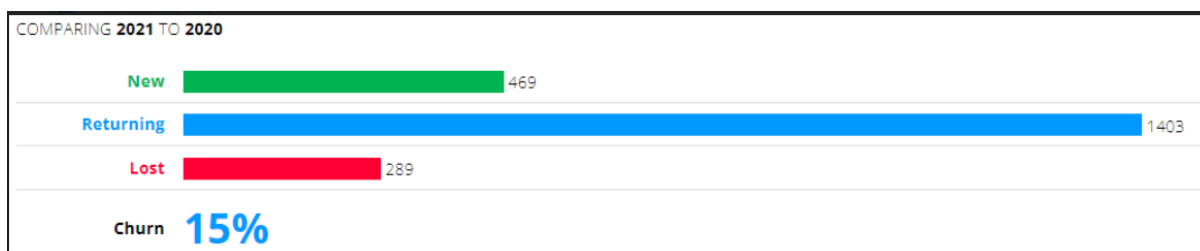


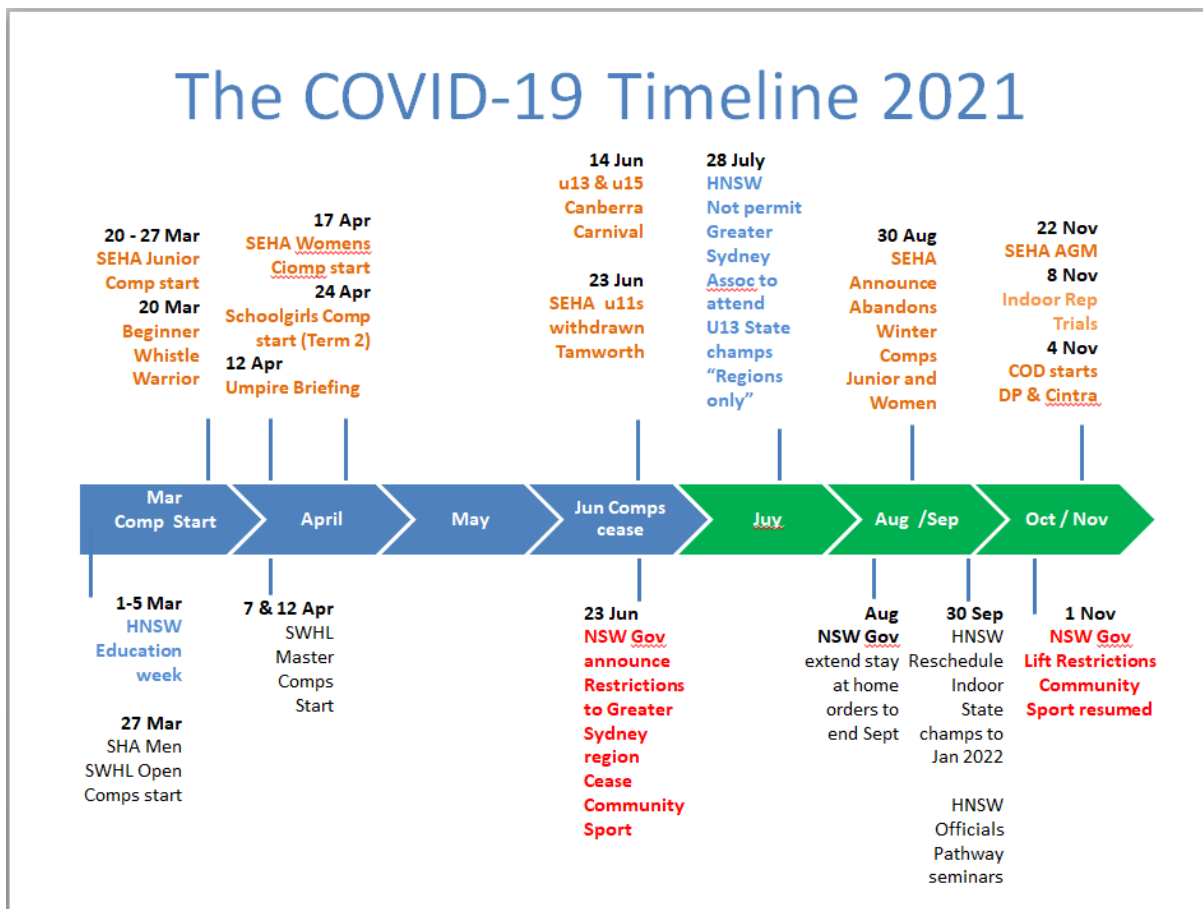
Table 1 provides summary results of the SEHA member participation survey facilitated by Hockey NSW our governing body for an insight on lost, new and returning players.

Churn Rate significantly reduced this year - 2018 31%, 2019 28% , 2020 42% 2021 15%

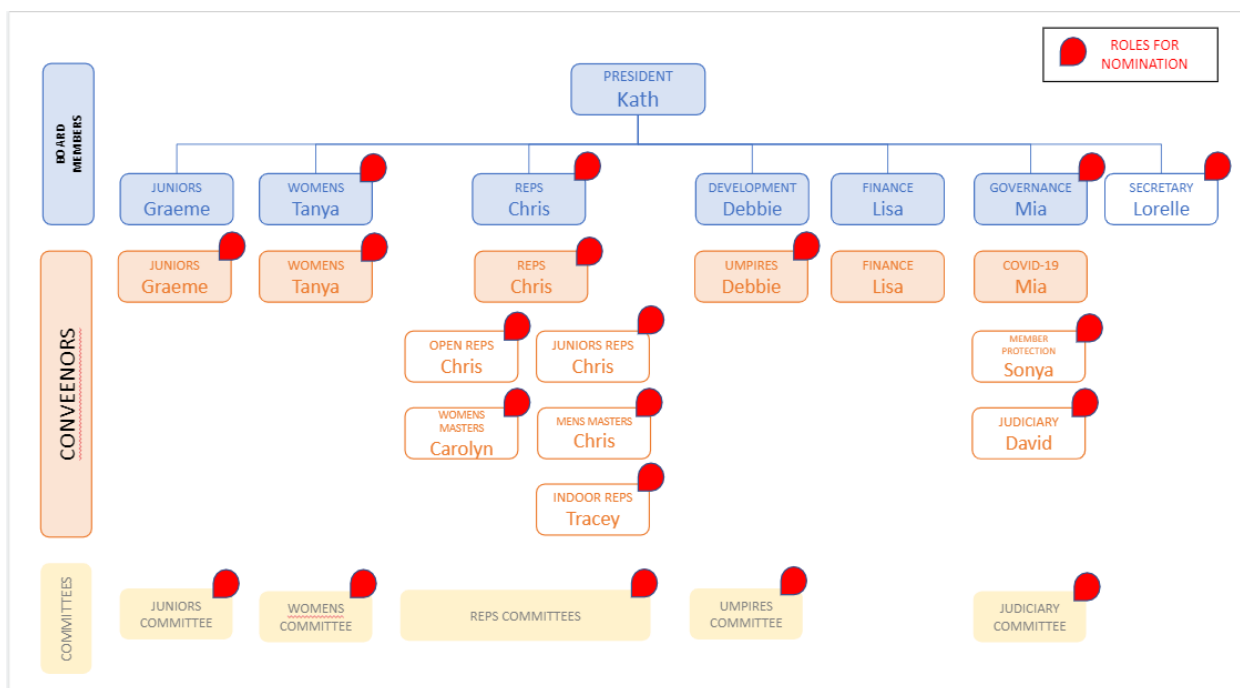
1.2. SEHA Member Churn Rate Diagrams



1.3. SEHA COVID-19 Timeline 2021



1.4. SEHA Structure 2021



1.5. 2021 Our Office Bearers and Volunteers

SEHA 2021 Directors, Conveners, Committee Members	
Board of Directors and Secretary	
President	Kathy Calokerinos
Secretary	Lorelle Byers
Finance	Lisa Jarvis
Governance	Mia Strecker-Reeves
Women's	Tanya Arathoon
Juniors	Graeme Barnard
Representatives	Chris Thuell
Development	Debbie Dodd
Administration	
COVID-19 Safety Coordinator	Mia Strecker-Reeves
Member Protection Officer	Sonya Le Huray
Judiciary Committee	David Mallon (Chair), Sonya Jenkins
Website/Facebook/Instagram	Kathy Calokerinos, Tanya Arathoon, Chris Thuell, Mia Strecker-Reeves
Auditor	Linda Lowe
Representatives	
Open Men's Rep Committee	Vacant - led by Chris Thuell
Open Women's Rep Committee	Vacant – led by Chris Thuell
Junior Rep Convenor Committee	Chris Thuell (Convenor) Adrian Jones, Janet Mathews, Katrina Cochrane Kathy Calokerinos
Indoor Rep Committee	Chris Thuell, Tracy Najdzeon
Masters Rep Convenor	Women - Carolyn Davies, Men - Sean Glassford
Competitions	
Junior Comp Committee	Convenor - Graeme Barnard (Bankstown), Secretary - David Richardson (Sutherland) Adrian Jones (UNSW) Tara Taylor (Glebe) Kim Brooks (Moorebank), Ray Veleski (Bankstown) and Sri Puthi (Sydney Uni) Teal Els (St George-Randwick), Justine Maroney (Sharks)
Women's Comp Committee (including Schoolgirls)	Convenor -Tanya Arathoon (Dolphins) Mia Strecker-Reeves (Dolphins), Kara Seymour (Bentstix) Jodie McIntosh (Esquires) Carolyn Davis (St George)
Development	
Regional Participation Coordinator	Andy van Pelt (Hockey NSW RPC)
COD Program Coaches 2020-21	Kathy Calokerinos, , Luke Fleming, Adrian Jones, Bella Sandy, Doug Allison, Jenny Avery, Katrina Cochrane, Chris Potts, Tim and Mim Pritchard., Allison Yeoland. Wade Johnson, Kai Jones
Umpiring & Officials Development	Juniors Umpire Coordinator - Lindsay Brine Umpire Coaches - Luke Fleming, Alison Banks, Kath Calokerinos, Alex Withey, Jodie McIntosh, Ian Soares, Malik Rasool, Marilyn Brown and Debbie Dodd.

2. GOVERNANCE DIRECTOR'S REPORT

Once again, Covid-19 unfortunately impacted our 2021 hockey season, abruptly cutting short our winter competitions with the Sydney lockdowns. Throughout the season SEHA focussed our efforts towards ensuring we had a safe operating environment for our members participating in competitions and representative teams.

Following the abridged 2020 season, one of our main objectives was to encourage participation and get players back on the field safely and enjoying the game we love.

Again, I would like to take this time to thank everyone involved throughout the season for their support and adherence to “venues safety plans” and NSW Health requirements allowing us to enjoy covid-safe competitions.

SEHA Operations

The continued use of technology enabled us to effectively engage and communicate throughout the season, and it appears that this is certainly a preferred way to hold meetings for our Board, Committees and Clubs as well as training sessions for our Umpires and Officials.

Covid-19 Safety Plans

The SEHA website provided information to our members, which was updated regularly:

- Safety Plans B
- Safety Plans C
- Game Day Documents
- Venue Plans

Including a summary table for our SEHA venues.

Venue	Current Safety Plan Received by SEHA	Game Day Info Pack	Service NSW QR Code
Bankstown	✓	X	✓
Briars - Cintra Concord	✓	X	✓
Daceyville (UNSW)	✓	✓	✓
Homebush (SOP)	✓	X	✓
Kyeemagh	✓	✓	✓
Marang - Kurnell	✓	✓	✓
Moorebank	✓	✓	✓
Sutherland - Sylvania	✓	✓	✓



Judiciary, Complaints and Incidents

This season, we created two new emails channels to handle any “[Complaints](#)” and “[Incidents](#)” from our members, which are also easily accessible via our website, along with our incident report forms.

This season, pleasingly we had no incidents or complaints that needed escalation to either our judiciary panel nor to our Member Protection Officer.

I would like to thank the ongoing support that is provided to our SEHA competitions - David Mallon (Judiciary Convenor), Sonya Jenkins (Judiciary panel), Sonya Le Huray (Member Protection Officer).

Lastly and most importantly, thanks to the rest of the SEHA Board, Hockey NSW, our clubs, venues, team managers, coaches, players, officials, umpires, ground marshals and parents and friends for their ongoing support throughout the season.

Let’s hope that 2022 will allow us to complete a full winter season.

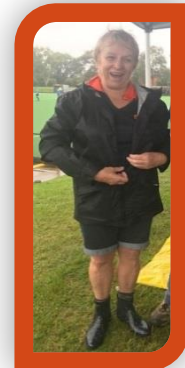
**Mia Strecker – Reeves,
SEHA Director Governance**

3. Secretary's REPORT

At the 2020 AGM a motion was passed for constitution amendments to allow electronic meetings. This has proven to be a great way to conduct meetings in a COVID safe way for our time poor volunteers attending Board and committee meetings and in engaging with our members and clubs.

The Board has proposed the following special resolution to be voted on at the Sydney East Hockey Association AGM on Monday 22nd November 2021.

"To update our SEHA Constitution to allow directors to re-stand for election at conclusion of their 2x2year term by removing clause 15.4 (b) from the Constitution".



3.1. Board Meetings Attendance 2021

Via Zoom	Board Meeting	1	2	3	4	5	6	7	8	9	10	11	Total
	Date	Dec-14	Feb-1	Mar-8	Apr-11	May-2	Jun-6	Jun-23	Jul-5	Aug-15	Sep-14	Oct-25	
President	Kathy Calokerinos	1	1	1	1	1	1	1	1	1	1	1	11
Secretary	Lorelle Byers	1	1	1	1	1	1	A	1	1	1	1	10
Finance	Lisa Jarvis	1	1	1	1	1	1	A	1	1	1	1	10
Governance	Mia Strecker-Reeves	1	1	1	1	1	1	1	1	1	1	1	11
Women's	Tanya Arathoon	A	A	1	A	1	1	1	1	1	1	A	7
Juniors	Graeme Barnard	1	1	1	1	1	1	1	1	1	1	1	11
Representative	Chris Thuell	1	1	1	1	1	1	1	1	1	1	1	11
Development	Debbie Dodd	1	1	1	1	1	1	1	1	1	1	1	11

A- Apology

3.2. Board Director Terms History

SEHA AGM	Calendar Year	Board Position	Board Position	Board Position	Board Position	Board Position	Board Position	Board Position	Secretary Role	President	Competitions
		Kathy Calokerinos	Tanya Arathoon	Graeme Barnard	Chris Thuell	Mia Strecker-Reeves	Lisa Jarvis	Debbie Dodd	Lorelle Byers	Briony Lupton	Danny O'Brien
2014	2015	Elected 1	Elected 1	Elected 1						Elected 1	Elected 1
2015	2016	2	2	2						2	2
2016	2017	Elected 1	Re-elected 1	Re-elected 1							
2017	2018	2	2	2	Elected 1	Casual 1					
2018	2019	Re-elected 1	Casual 1	Elected 1	2	2	Casual 1	Elected 1			
2019	2020	2	Elected 1	2	Re-elected 1	Elected 1	2	2	Casual 1		
2020	2021	Casual 1	2	Re-elected 1	2	2	Elected 1	Re-elected 1	2		
2021	2022	2	Re-election	2	OPEN	Re-election	2	2	OPEN		

Note: Affiliated Clubs nominate Board Directors for election at AGM. The Board has the power to fill Casual vacancies with suitable qualified persons.
Constitution allows up to 7 directors and Secretary.

Lorelle Byers
SEHA Secretary



3.3. Membership Profile

FAST FACTS

Age	2021	%	2020	2019	2018	2017
O18	1237	67	1219	1311	1253	1234
U18	637	33	566	634	658	604
Total	1916	100%	1785	1989	1911	1838
Average age	28		28	27	27	
Gender break-down						
Female	1006	52.5	942	1064	1020	
Male	906	47.2	838	921	887	
other	4	0.2	5	4	4	
	1916		1785	1989	1911	

SEHA AFFILIATED CLUBS	2021	2020	2019	2018	OTHER Clubs/Schools participating in our competitions
Bankstown Sports Hockey Club Inc.	96	97	153	135	Women's -Bosco Hockey
Bentstix Hockey Club	125	114	117	93	Women's – Cronulla RSL Hockey
Briars Hockey Club	360	381	429	372	Juniors - Moorebank Hockey Club
Canterbury Women's	23	25	28	25	Women's /Juniors- Sharks Hockey Club
Eastcoast Dolphins Women's Hockey Club	35	34	46	48	Women's/Juniors - Sutherland District Hockey Club
Easts Hockey Club	73	75	79	80	Junior s- Sydney University Hockey Club
Easts Women's	63	65	72	76	Women's - Tartans Hockey Club
Esquires	22	19	24	33	Schoolgirls - Ascham
Glebe District Hockey Club	342	306	350	366	Schoolgirls - Danebank
Monterey	27	25	29	26	Schoolgirls - Kambala
POHOGS	10	30	29	17	Schoolgirls - Kincoppal Rosebay
Revesby Workers	4	13	12	9	Schoolgirls - Loreto Kirribilli
St George Randwick Hockey Club	215	198	191	233	Schoolgirls - MLC;
UNSW	444	352	367	354	Schoolgirls - Monte;
Western Suburbs	5	14	17	19	Schoolgirls - Ravenswood;
Other - SEHA Women's Masters	21	22	20	27	Schoolgirls - Santa Sabina;
Other - SEHA Schoolgirls reps	7	5	16		Schoolgirls - St Catherine's
Other - SEHA Reps	16	6	6		Schoolgirls - St Vincent's College;
Other	56	4			Schoolgirls - Sydney Girls High School
Total	1916	1785	1985	1911	Schoolgirls – Wenona

4. FINANCE DIRECTOR'S REPORT

2021 – The year that started and abruptly ended.

We started off the year strongly with 1.9k members and all competitions kicking off.

Income and Expenditure

Our total income for the year was \$200,539.55 up by 48% compared to last year.

Our costs increased by 34% in line with this rise in income.

Unfortunately, all sports were then forced to stop midseason due to COVID-19 and the governments Order of no community sport in the Greater Sydney region.

This year we managed to hold the schoolgirls' competition, part of junior's competition and representative juniors and part of the women's competition.

The variances are explained remembering last year total memberships were lower, the schoolgirls competition was not conducted, turf hire fees lower and Rep State Championships cancelled.

Refunds and Credits

As a result of the shortened women's' competition we have already refunded team entry fees – a total of \$46,331.74.

As our accounting basis is cash it is important to note although we show a profit of \$53,151.38 – part of this composes of income in advance and credits for the 2022 year.

Juniors will be offering a credit/discount on next year's team entry costs – a total of \$17,350

Junior representative was lucky to be able to play part of the season. We have already refunded part of the fees to those players that requested a refund.

The remaining credit of \$5,360 will be allocated to junior representative fees 2022 as requested by those members.

Another important note is that the SWHL Masters bill has not yet been paid as at 30 September 2021 – this will be a cost of \$4,285.92 which will also reflect in the 2022 figures.

So all up a total of \$26,995.92 of the current profit is already being held for refunds/credits in the 2022 season.

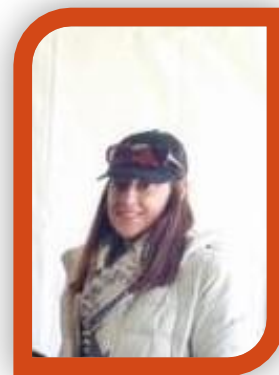
Fees 2022

As the same as last year SEHA's fees for 2022 will remain the same at \$20 per adult and \$12 per junior. (SEHA fees have not increased for 7 years). The fee structure break-down see section 4.5.

Thank you

I would like to thank all the SEHA Board for their assistance to me during these crazy times and working with me to keep track of all the refunds and credits required to clubs and members.

Also thank you to our external Auditor Linda Lowe (see section 4.1).



Financial Statements

The audited financial statements Balance Sheet and Profit and Loss (cash basis) and a detailed break-down by class follow (see section 4.2 and 4.3 and 4.4).

Directors Declaration

The directors have determined that the association is not a reporting entity and that this special purpose financial report should be read in conjunction with the Finance Directors Report attached to the financial statements.

The directors of the company declare that:

1. the financial statements and additional notes, as set out in the financial statements, present fairly the association's financial position as at 30 September 2021 and its performance for the year ended on that date; and
2. in the directors' opinion there are reasonable grounds to believe that the association will be able to pay its debts as and when they become due and payable.

This declaration is made in accordance with a resolution of the Board of Directors, 28 October 2021.

Lisa Jarvis
SEHA Finance Director

4.1. Auditor's Report

Linda Lowe - Principal

28 October 2021

Sydney East Hockey Association
Email: Finance@seha.com.au

Dear Committee & Members

Sydney East Hockey Association: ABN 98 153 957 262

I have reviewed the accounting records for Sydney East Hockey Association (SEHA) for the period 1 October 2020 to 30 September 2021. My review is to provide an opinion as to whether the financial report as a whole is free from material misstatement. Please note, my review is not a guarantee that all errors or misstatements will be detected. Misstatements can arise from fraud or error and are considered material if, individually or in the aggregate, they could reasonably be expected to influence the economic decisions of users taken on the basis of this financial report

The financial report and my review should be read in conjunction with the Treasurer's report so that users can understand the whole financial position of the Association for the financial year.

Opinion

The accounts for SEHA are prepared on a cash basis and the Balance Sheet is correct as at 30 September 2021 on this basis. Items recorded in the Profit and Loss Statement for the year 1 October 2020 to 30 September 2021 appear to be correctly entered and classified based on my review. Overall, the attached Balance Sheet and Profit and Loss Statement prepared reflect the financial operations during the year.

If you have any questions please do not hesitate to contact me on 0407 493 459.

Yours sincerely



Linda Lowe



Tax agent
16715003

lowelinda@optusnet.com.au • 0407 493 459 • Beverly Hills NSW 2209
ABN: 72 015 869 592

Liability limited by a scheme approved under Professional Standards Legislation

4.2. SEHA Balance Sheet 30 September 2021

Sydney East Hockey Association	
Balance Sheet	
As of September 30, 2021	
	TOTAL
Assets	
Current Assets	
1-1000 SEHA ANZ Account	102,569.42
1-1001 Term Deposit Account	76,887.94
1-1110 EDWHA Account	0.00
Undeposited Funds	0.00
Total Current Assets	A\$179,457.36
Long-term assets	
1-3000 Equipment @ Cost	2,646.83
1-3100 Equipment Accum Depreciation	-2,646.83
1-4000 Uniforms @ Cost	10,626.00
1-4100 Uniforms Accum. Depreciation	-10,626.00
Total long-term assets	0.00
Total Assets	A\$179,457.36
Liabilities and shareholder's equity	
Current liabilities:	
2-9999 Suspense	0.00
4564807018209674 ANZ Credit Card	-2,146.98
ATO Clearing Account	-7,259.18
ATO GST Integrated Client Account	0.00
GST Liabilities Payable	1,545.29
PAYG Withholdings Payable	0.00
Total current liabilities	A\$ -7,860.87
Shareholders' equity:	
Net Income	53,151.38
Retained Earnings	134,166.85
Total shareholders' equity	A\$187,318.23
Total liabilities and equity	A\$179,457.36

4.3. SEHA Profit & Loss Statement 1 October 2020 to 30 September 2021

Sydney East Hockey Association			
Profit and Loss			
October 2020 - September 2021			
	TOTAL		
	OCT. 2020 - SEP. 2021	OCT. 2019 - SEP. 2020 (PY)	% CHANGE
Income			
4-1000 Competitions			
4-1100 Junior Competition	41,954.56	28,690.93	46.22935%
4-1200 Schoolgirls Competition	29,700.00	13,500.00	120.00%
4-1600 Womens Competition	58,260.10	39,745.46	46.58303%
Total 4-1000 Competitions	129,914.66	81,936.39	58.55551%
4-3000 Representatives			
4-3100 Junior Reps	36,396.56	3,545.46	926.56806%
4-3400 Open Men's Reps	1,418.17	90.91	1,459.9714%
4-3600 Open Women's Reps	981.81		
4-3700 Masters Reps			
4-3745 SWHL Masters	1,800.04	4,175.43	-56.88971%
Total 4-3700 Masters Reps	1,800.04	4,175.43	-56.88971%
4-3800 Indoor Reps			
4-3810 Junior Indoor Reps	-50.00	9,913.68	-100.50435%
4-3820 Open Women's Reps	218.18	1,327.27	-83.56175%
4-3830 Open Men's Reps		890.90	-100.00%
4-3840 Women's Masters Reps		2,418.17	-100.00%
Total 4-3800 Indoor Reps	168.18	14,550.02	-98.84413%
Total 4-3000 Representatives	40,784.78	22,961.82	82.29625%
4-7000 Assoc Administration Fees	29,249.91	26,883.56	8.80222%
Grants / Sponsorships		2,300.00	-100.00%
Interest Income	610.22	1,277.72	-52.24149%
Unapplied Cash Payment Income		0.00	
Total Income	A\$200,539.55	A\$134,759.49	48.81293%
Cost of Sales			
5-1000 Association Fees	8,041.50	13,402.50	-40.00%
5-2000 Field/Turf Hire	92,611.34	62,901.63	47.23202%
5-3000 Competition Entry	12,295.67	5,781.84	112.66016%
5-4000 Umpiring	8,342.50	4,715.00	76.93531%
5-4100 Other Officials	14,475.32	7,675.00	88.60352%
5-5000 Coaching	5,928.97	5,510.00	7.60381%
5-6000 Equipment		781.90	-100.00%
5-7000 Uniforms	1,272.73	2,075.00	-38.66361%
5-8000 Other Costs	870.51	1,844.36	-52.80151%
5-8100 Awards & Trophies		2,272.00	-100.00%
Total Cost of Sales	A\$143,838.54	A\$106,969.23	34.47978%
GROSS PROFIT	A\$56,701.01	A\$27,800.26	103.95956%
Expenses			
8-2000 Advertising/Promotional	2,699.08	3,021.50	-10.67086%
Unapplied Cash Bill Payment Expense	0.00		
Total Expenses	A\$2,699.08	A\$3,021.50	-10.67086%
Other Expenses			
Other Expense	850.55	1,675.45	-49.23453%
Total Other Expenses	A\$850.55	A\$1,675.45	-49.23453%
NET EARNINGS	A\$53,151.38	A\$23,103.31	130.05959%

4.4. SEHA Profit & Loss Statement by Class - 1 October 2020 to 30 September 2021

Sydney East Hockey Association				
Profit and Loss by Class				
October 2020 - September 2021				
	ADMIN	DEVELOPMENT	INDOOR REPS	JUNIOR COMP
Income				
4-1000 Competitions				
4-1100 Junior Competition				41,954.56
4-1200 Schoolgirls Competition				
4-1600 Womens Competition	10.91			
Total 4-1000 Competitions	10.91			41,954.56
4-3000 Representatives				
4-3100 Junior Reps	225.45			
4-3400 Open Men's Reps				
4-3600 Open Women's Reps				
4-3700 Masters Reps				
4-3745 SWHL Masters				
Total 4-3700 Masters Reps				
4-3800 Indoor Reps				
4-3810 Junior Indoor Reps			-50.00	
4-3820 Open Women's Reps				
Total 4-3800 Indoor Reps			-50.00	
Total 4-3000 Representatives	225.45		-50.00	
4-7000 Assoc Administration Fees	28,468.10	781.81		
Interest Income	610.22			
Total Income	A\$29,314.68	A\$781.81	A\$ -50.00	A\$41,954.56
Cost of Sales				
5-1000 Association Fees	8,041.50			
5-2000 Field/Turf Hire				25,694.08
5-3000 Competition Entry				
5-4000 Umpiring				75.00
5-4100 Other Officials		100.00		
5-5000 Coaching		50.00		
5-7000 Uniforms				
5-8000 Other Costs	839.05			
Total Cost of Sales	A\$8,880.55	A\$150.00	A\$0.00	A\$25,769.08
GROSS PROFIT	A\$20,434.13	A\$631.81	A\$ -50.00	A\$16,185.48
Expenses				
8-2000 Advertising/Promotional	1,090.00			
Unapplied Cash Bill Payment Expense				
Total Expenses	A\$1,090.00	A\$0.00	A\$0.00	A\$0.00
Other Expenses				
Other Expense	727.82	122.73		
Total Other Expenses	A\$727.82	A\$122.73	A\$0.00	A\$0.00
NET EARNINGS	A\$18,616.31	A\$509.08	A\$ -50.00	A\$16,185.48

Sydney East Hockey Association

Profit and Loss by Class

October 2020 - September 2021

	JUNIOR REPS	OPEN MEN'S REPS	OPEN WOMEN'S REPS	SCHOOLGIRLS COMP
Income				
4-1000 Competitions				
4-1100 Junior Competition				
4-1200 Schoolgirls Competition				29,700.00
4-1600 Womens Competition				
Total 4-1000 Competitions				29,700.00
4-3000 Representatives				
4-3100 Junior Reps	36,171.11			
4-3400 Open Men's Reps		1,418.17		
4-3600 Open Women's Reps			981.81	
4-3700 Masters Reps				
4-3745 SWHL Masters				
Total 4-3700 Masters Reps				
4-3800 Indoor Reps				
4-3810 Junior Indoor Reps				
4-3820 Open Women's Reps			218.18	
Total 4-3800 Indoor Reps			218.18	
Total 4-3000 Representatives	36,171.11	1,418.17	1,199.99	
4-7000 Assoc Administration Fees				
Interest Income				
Total Income	A\$36,171.11	A\$1,418.17	A\$1,199.99	A\$29,700.00
Cost of Sales				
5-1000 Association Fees				
5-2000 Field/Turf Hire	11,416.37	241.82	465.46	21,391.80
5-3000 Competition Entry	10,022.95	1,136.36	1,136.36	
5-4000 Umpiring	2,510.00			3,662.50
5-4100 Other Officials	156.12			6,075.00
5-5000 Coaching	5,180.00		698.97	
5-7000 Uniforms	1,272.73			
5-8000 Other Costs	31.46			
Total Cost of Sales	A\$30,589.63	A\$1,378.18	A\$2,300.79	A\$31,129.30
GROSS PROFIT	A\$5,581.48	A\$39.99	A\$ -1,100.80	A\$ -1,429.30
Expenses				
8-2000 Advertising/Promotional	1,609.08			
Unapplied Cash Bill Payment Expense				
Total Expenses	A\$1,609.08	A\$0.00	A\$0.00	A\$0.00
Other Expenses				
Other Expense				
Total Other Expenses	A\$0.00	A\$0.00	A\$0.00	A\$0.00
NET EARNINGS	A\$3,972.40	A\$39.99	A\$ -1,100.80	A\$ -1,429.30

Sydney East Hockey Association

Profit and Loss by Class
October 2020 - September 2021

	SWHL MASTERS	WOMEN'S COMP	NOT SPECIFIED	TOTAL
Income				
4-1000 Competitions				A\$0.00
4-1100 Junior Competition				A\$41,954.56
4-1200 Schoolgirls Competition				A\$29,700.00
4-1600 Womens Competition		58,249.19		A\$58,260.10
Total 4-1000 Competitions		58,249.19		A\$129,914.66
4-3000 Representatives				A\$0.00
4-3100 Junior Reps				A\$36,396.56
4-3400 Open Men's Reps				A\$1,418.17
4-3600 Open Women's Reps				A\$981.81
4-3700 Masters Reps				A\$0.00
4-3745 SWHL Masters	1,800.04			A\$1,800.04
Total 4-3700 Masters Reps	1,800.04			A\$1,800.04
4-3800 Indoor Reps				A\$0.00
4-3810 Junior Indoor Reps				A\$ -50.00
4-3820 Open Women's Reps				A\$218.18
Total 4-3800 Indoor Reps				A\$168.18
Total 4-3000 Representatives	1,800.04			A\$40,764.76
4-7000 Assoc Administration Fees				A\$29,249.91
Interest Income				A\$610.22
Total Income	A\$1,800.04	A\$58,249.19	A\$0.00	A\$200,539.55
Cost of Sales				
5-1000 Association Fees				A\$8,041.50
5-2000 Field/Turf Hire		33,401.81		A\$92,611.34
5-3000 Competition Entry				A\$12,295.67
5-4000 Umpiring	1,845.00	250.00		A\$8,342.50
5-4100 Other Officials		8,144.20		A\$14,475.32
5-5000 Coaching				A\$5,928.97
5-7000 Uniforms				A\$1,272.73
5-8000 Other Costs				A\$870.51
Total Cost of Sales	A\$1,845.00	A\$41,796.01	A\$0.00	A\$143,838.54
GROSS PROFIT	A\$ -44.96	A\$16,453.18	A\$0.00	A\$56,701.01
Expenses				
8-2000 Advertising/Promotional				A\$2,699.08
Unapplied Cash Bill Payment Expense			0.00	A\$0.00
Total Expenses	A\$0.00	A\$0.00	A\$0.00	A\$2,699.08
Other Expenses				
Other Expense				A\$850.55
Total Other Expenses	A\$0.00	A\$0.00	A\$0.00	A\$850.55
NET EARNINGS	A\$ -44.96	A\$16,453.18	A\$0.00	A\$53,151.38

4.5. Schedule of Fees 2021

Membership Type	Age as at 31/12/2021	National Insurance (a)	Hockey Aust (incl insurance) (b)	HNSW Total (incl fees and admin charges) (c)	Total Higher Fees (b+c) = (d)	SEHA Admin Fee (e)	Total Registration Fee Due (d+e)=(f)
Stick2Hockey: Junior Playing Membership	8 and Under	\$0.00	\$0.00	\$14.90	\$14.90	\$12.00	\$26.90
Junior Playing Membership	11 and Under	\$12.00	\$31.50	\$24.10	\$55.60	\$12.00	\$67.60
Youth Playing Membership	18 and Under	\$12.00	\$31.50	\$54.70	\$86.20	\$12.00	\$98.20
Adult Playing Membership	19 and Over	\$12.00	\$43.00	\$105.20	\$148.20	\$20.00	\$168.20
Masters Player Only	Playing one Masters State Championship Only in 2021	\$0.00	\$0.00	\$57.80	\$57.80	\$20.00	\$77.80
Non-Playing Officials Memberships Officials, Coaches and Managers	Non Playing Membership	\$0.00	\$0.00	\$20.00	\$20.00	\$0.00	\$20.00
Non-Playing Supporters Membership Club level supporter, administrators, Volunteer	Non Playing Administration Membership	\$0.00	\$0.00	\$0.00	\$0.00	\$0.00	\$0.00

Changes introduced in 2021

1. Due to the 2020 COVID disruption to the season start, Hockey NSW offered an incentive to members that registered by 18 July 2020 to also receive a HNSW fee component discount for 2021 season.
2. Change to the old U9 age bracket - for registrations only. Hockey NSW had to adapt to the Hockey Australia age bracket of 8 and under. Now that age group is for kids who are still 8 years of age (or younger) by 31st December 2021. It only affects the 8-9 year olds for registration purposes.

Active Kids Program Vouchers - Families are able to access their \$100 Active Kids voucher for 2021.

Voucher 1 is valid January to December and Voucher 2 is valid July to December.

Following the impact of COVID on many of our hockey families, it is more important than ever to ensure hockey maximises the benefits of the Active Kids Voucher provided by the NSW Government.

We have some tips below:

1. Collect fees via revolutioniseSPORT. If clubs collect their fees via revolutioniseSPORT, the \$100 Active Kids Rebate will be applied to the combined total of National, State (where applicable), Association and Club fees.
2. Any fees or subscriptions charged or collected during the season be incorporated into the upfront registration fee (e.g. a \$50 club registration becomes \$85 and includes turf fees normally charged during the season)
3. Create a value-add registration that bundles the registration fee with additional items (e.g. a \$50 club registration fee becomes a \$70 registration bundle that includes hat, shirt, stick and ball).

With some members eligible for the two-for-one Hockey NSW fee reward, it is important to check the combined total of all your payment classes. REMEMBER – if fees are less than \$100, parents will lose the difference.

5. SEHA WOMEN'S COMPETITION DIRECTOR REPORT

I started my 2020 report by saying it was a year like no other ... so it is only fitting that I start this report by saying 2021 was a year like 2020!

However, in a way it was a little more problematic as we started with a bang and ended with a whimper due to the lockdown requirements.

Again, I must start by thanking our Women's Competition Committee:

Kara Seymour, Mia Strecker-Reeves, Carolyn Davies and Jodie McIntosh for their time, patience and care for the safe and efficient running of our competition.

Thank you also to all our club delegates who continued to support the committee and administer their own clubs/teams

Finally, to the Board who supported me personally and the competition with their wisdom, time and patience.

In an age where it gets increasingly harder to find volunteers, we are blessed with so many interested and devoted people to our great association and sport.

We were able to run two competitions this year:

Women's Competition – April-June – 9 rounds

	PREM	2	3	4	
1	Easts 1	Easts 2	Easts 3	Easts 4	
2	Pohogs 1	Bentstix 2	Bentstix 3	Bentstix 4	
3	UNSW 1	UNSW 2	UNSW 3 Black	UNSW 4 Black	
4	Sutherland 1	Sutherland 2	Sutherland 3	Glebe 4	
5	Esquires 1	Pohogs 2	SGR 3	SGR 4	
6	RSL 1	Briars 2	Briars 3	Briars 4	
7	Sharks 1	Sharks 2	UNSW 3 Gold	UNSW 4 Gold	
8		Dolphins 2	Dolphins 3		
9					
10					
	7	8	8	7	30



Highlights – welcoming back Briars to our competition and additional teams from UNSW – all positive signs for the longevity of our competition

When the lockdown was called in June 2021, we ceased competition games and then called the season abandoned in September as community sport was not to return until well after the normal winter season.



Schoolgirls Competition – Term 2

	SEHA 1	SEHA 2/1	SEHA 2/2	SEHA 2/3	SEHA 2/4	SEHA 3	SEHA 4/1	SEHA 4/2	SEHA 5	
1	Ascham 1	Ascham 3	St Caths 1	Ascham 4	Ascham 5	Ascham 6	Ascham 7	Ascham 8	Ascham 10	
2	Loreto 1	Loreto 3	Loreto 4	Danebank 2	Loreto 5	Loreto 6	Loreto 7	Loreto 8	Loreto 10	
3	KRB 1	KRB 2	Danebank 1	KRB 3	KRB 4	KRB 5	KRB 6	Danebank 3	KRB 7	
4	Wenona 1	Wenona 2	Kambala 1	Wenona 3	SGHS 1	Wenona 4	Wenona 5	Loreto 9	Wenona 6	
5	MLC 1	MLC 2	MLC 3	SVC 2	Santa 3		MLC 4	Santa 4	Ascham 9	
6	Monte 1	Monte 2	Santa 1	Santa 2	Monte 3		Kambala 2	Monte 4	Danebank 4	
7	Ascham 2	Ravenswood 1	Ravenswood 2				Ravenswood 3	Ravenswood 4	KRB 8	
8	Loreto 2	SVC 1					ST Caths 2	SVC 3		
9										
10										
	8	8	7	6	6	4	8	8	7	62

We were able to run a 7-week schoolgirls competition without incident this year.

Grade	Premiers	Runners Up
1	Ascham 1	Ascham 2
2/1	Ravenswood 1	Ascham 3
2/2	Danebank 1	Santa 1
2/3	Danebank 2	Ascham 4
2/4	SGHS 1	Ascham 5
3	Ascham 6	KRB 5
4/1	Kambala 2	Ravenswood 3
4/2	Santa 4	Monte 4
5	Ascham 9	Wenona 6



We have been informed by schools that IGSSA will be running a two-term competition from 2022 -which means our competition may not proceed as it has for the past 40 + years. This is a sad situation as many, many players have gone through the competition over this time. We will continue to look at ways for the competition to continue in some form over the coming months.

So here is to the end of 2021, and to a brave new world from 2022 onwards!

We look forward to welcoming everyone back for another season.

Tanya Arathoon
SEHA Women's Competition Director

6. JUNIOR COMPETITION REPORT

It has been yet another challenging year in 2021. It was a promising start with the season getting underway in March, but coming to a sudden stop in June. We did manage to complete 10 of the scheduled 15 rounds, but disappointingly had to abandon the season, with no finals or 'winners' recorded.

The committee

I would like to thank the competition committee, for the way they all worked together to plan and prepare for the season, and ensure the smooth running of what games actually took place. The committee comprises a representative from each participating club.

The season

Total of 9 clubs entered a total of 46 teams, across 8 divisions. Round 1 commenced on 26th March, and was looking good. By the 19th June everyone had completed 10 rounds (except U17's who had a week off for U18 state championships) and was looking forward to the run to the finals, when suddenly a lockdown was called. Originally only for 3 weeks, but then we all know what happened, and then . . . abandoned.

Finances

With all clubs having already paid their competition entry fees, and having incurred some ground hire costs, with more invoices to come, it was decided to carry forward a credit on the balance of the season, into next season, rather than mess around with refunds, which would not have been finalised before the end of our financial year. This has resulted in a significant surplus for the junior competition this year, but will be offset by an equivalent deficit against next year's figures.

Now that all our costs have been accounted for, we can announce that clubs will be credited approximately 40% of this year's fees, to be reduced off next year's entry fees. This will be \$100 for each U9's team; \$300 for each U11's team; and \$450 for all other teams entered in 2021. A total of \$17,350.

In conclusion

I would like to again thank all the members of the junior competition committee, the participating clubs, players, coaches, managers and parents, and hope they are not deterred from returning to hopefully an uninterrupted season next year. My thoughts are with those under 17's who will not be able to play juniors next year and will have missed out on potentially winning their last junior grand finale.

I look forward to a better 2022 season.

Graeme Barnard
SEHA Junior Competition Director



6. DEVELOPMENT DIRECTOR REPORT

The 2021 season and year saw opportunities for development of umpires and umpire coaches, players and player coaches and technical officials in our senior women's, junior and schoolgirls competitions. Being able to attend Opens, U18s and U15s state championships was also beneficial to the development of skills in these groups.

We kicked off the Junior Competition with running a booth at the first round where the junior clubs all come together at a single venue. Unfortunately the day was marred by the weather but we will be doing this again next year to engage more closely with our junior clubs and their needs.

The Sydney lockdown meant that Greater Sydney associations, including our own, were not able to attend the State Champs and the SEHA run competitions came to a close in June as well.

One of the bonuses from this last outdoor season was being able to run Whistle Warrior courses, Junior and Senior, in person rather than on Zoom improving the personal interaction and engagement with the participants.

During lockdown Junior and Senior Q&A information evenings were held to maintain engagement with the hockey season, in the hope that there would be an opportunity to put some of it into practice. The format was well received and this will be continued next year as part of our development program.

Hockey NSW, in conjunction with ACT Hockey, ran 4 seminars during lockdown relating to umpiring and technical official's pathways and development. These were well worth attending and many people from our association took advantage.

Development of our technical officials continued in the Senior Women's competition and also at State Championships. A gap has been identified to provide a pathway for interested people to commence learning the role of a technical official, starting with work as a judge.

It was really pleasing to see umpires who have come through the junior competition commence umpiring in the SEHA Senior Women's competition. The efforts of our clubs and the association is starting to pay off!

SEHA has registered interest in the school's program with Hockey NSW, to take hockey into the schools in our association. If your school or a school in your area is interested in participating, please have them register with hockey NSW as this is where our future players will be coming from!



This year saw the retirement (or mini break) from umpiring by Marilyn Brown after 30 plus years of service to our senior competitions. Marilyn remains involved as an umpire coach and mentor at both association and State level. Thank you for those excellent years of umpiring Brownie!

- **Junior Q & A Zoom information evening held 6 July.** The format presented information on Presentation and Umpire Teamwork / Co-operation then segued into a Q&A interactive session. Thank you to all the junior clubs, especially UNSW, Glebe and St George, who at very short notice had good numbers (around 16) at the night. It was designed to keep our juniors engaged with hockey during lockdown. Thanks also to Lindesay Brine, Kath Calokerinos and Chris Thuell who contributed their expertise at umpire coaching and knowledge of junior coaching to the evening. We also had 4 of our junior umpire representatives at State Champs, Will Brine, Cate Heath, Scarlett and Dakota Thuell give the participants a 1 minute rundown on their experiences at State Champs, in the hope that it will encourage those attending to want that experience for themselves.
- **Senior Q & A Zoom information evening held July 2021.** The format presented information on Presentation, Fitness and Umpire Teamwork / Co-operation then segued the Q&A interactive session.
- **Umpire Pathway and Accreditations**
Hockey NSW provided updated information on umpire competencies required at each level. A session was held open to all the SEHA umpire coaches to present and discuss the new set of competencies provided by Hockey NSW. The feedback from our session was reported back to Hockey NSW.
- **Umpire Development**
 - Will Brine was upgraded to Junior 2 at the U15 Boys State Championships – congratulations Will!
 - Dakota Thuell and Cate Heath both attended U15 Girls State Championships. Dakota as our SEHA Rep and Cate from the umpire pick-up list.
 - Scarlet Thuell umpired and played at U18 Girls State Championships.
 - Alex Withey umpired at U18s State championships and Chris Thuell umpired at Open Men's.
- **NCAS Level 1 Coaching Accreditation course** led by Andy at Cintra Concord – 8 attendees
- **The Centre of Development u13 and u15 player** development program this summer has 86 registered (2021-22) compared to last year's growth 18% in numbers with total of 107 (2020-21) compared to 90 (2019-20) training at Cintra and Daceyville (see section 6.2 and 6.3).
- **Schools Program by RPC** – impacted by shutdowns this year we attended 6 schools (see 6.4)

Thanks to our panel of committed umpire coaches: Luke Fleming, Kath Calokerinos, Marilyn Brown, Alison Banks, Alex Withey, Lindesay Brine, Malik Rasool, Chris Thuell and Debbie Dodd.

We are always looking for people willing to be part of our development team in all areas of development (especially Team Coaches), so if you would like to be part of our team or have an idea or area that needs further action at association level please contact me at:

Email: development@seha.com.au. Look forward to having a full season for everyone in 2022!

Debbie Dodd
SEHA Development Director

6.1. Junior Umpire Development Report

The 2021 season opened brightly with plans to develop the growing number of junior umpires over the year to once again ensure junior grand finals were officiated by junior umpires wherever possible, and to provide a number of promising umpires the opportunity to experience umpiring at state championships together with the coaching which goes along with that.

After a promising start, plans for one-on-one coaching, state championship and carnival selections, accreditation assessments and selection of umpires for the finals series were all put on hold as we locked down again.

While we were grateful to Deb and friends for running Whistle Warrior sessions and holding Zoom sessions for umpires of all levels, unfortunately we weren't able to make as much progress with face to face coaching as we would like.

Fortunately, the U15 State Championships did take place and we were well represented by William Brine (U15 Boys) and Dakota Thuell (U15 Girls) while Cate Heath also umpired for another association at the U15 Girls State Championship. I'm confident they all gained from the experience.

As we look to 2022 we will reactivate these plans, while also looking to absorb and communicate the new State levels for junior umpires to ensure our enthusiastic junior umpires have plenty of opportunities to develop and perform in carnivals and championships.

My thanks to all of the Clubs and junior umpires for their commitment to learning and umpiring in 2021. Roll on 2022!

Lindesay Brine
Junior Umpire Coordinator



6.2. SEHA Centre of Development Program Participants (u13-u15)

Cintra and Daceyville (8 weeks)

Our Regional Participation Coordinator Andy van Pelt led the Centre of Development 8 week program over last summer for u13s and u15s who then play as metro central eagles, getting a great hockey experience at regional challenge Tamworth, in late February 2021. Participation in this program peaked last at 107 (2020-21). As we start this summer post COVID shutdown registrations are at 86 (2021-22).

Thanks to our amazing SEHA COD Coaches that support this program including: Katrina Cochrane, Doug Allison, Bella Sandy, Luke Fleming Adrian Jones, Kai Jones, Kathy Calokerinos, Wade Johnson, Allison Yeoland



NAME		
Alvaro, Sofia	Grindrod, Polly	Robinson, Molly
Austin, Mia	Haigh, Amelie	Roger, Edgar
Barker, Mitchell	Halleen, Sophie	Roxburgh, Annabelle
Beaumont, Aurora	Hammond, Dakota	Rutledge, Eric
Blanch, Xavier	Hammond, Harrison	Ryan, Emily
Boardman, Ivo	Haynes, Amelia	Sabey, Nicholas
Bray, Sofia	Haynes, Stephanie	Seebacher, Lilli
Broadbent, Charlie	Heaney, Lauren	Simpson, Piper
Broadbent, Luke	Hutchings, Madeline	Srdic, Emilie
Bush, Abigail	Jarvis, Ciara	Summerfield, Neve
Callan, Keela	Jarvis, Lily	Taylor, Nathaniel (Nate)
Campbell, Claire	Jeremy, Isaac	Taylor, Oscar
Campbell, Victoria	Jewell, Ella	Tordoff, Tilda
Chen, Sophia	Johnston, Frankie	Travis, Ayisha
Choy, Ethan	Jones, Zachary	Tudehope, Madeleine
Cochrane, Siala	Kerekovic, Emily	Ulbrich, Dylan
Cook, Amelia	Kralj, Madeline	Vecellio, Kaelan
Cooper, Miki	Lette, Rhys	Vinciguerra, gemma
Davey, Annabelle	Lloyd, Sophie	Walsh-sams, Aislinn
Derrick, Sebastian	Martin, Allegra	Walsh-sams, Aoife
Dimmock, Jai	Martin, Ana	Weatherall, Jessica
Dimmock, Riley	Martin, Daisy	Welsh, Rhys
Doyle, Jeremy	Martin, Pia	Williams, Tara
Everett, Mark	Miles, Saskia	Wilson, Addison
Forchert, Riley	Monaghan, Hannah	Worsley, Camille
Fordham, Ashton	Netting, Adelaide	Yeoland, Henry
Fung, Felix	Nolan-Uzcilas, Genevieve	
Gerber, Clementine	Oh, Zahra	
Godward, Ella	O'Kane, Hayden	
Goodridge, Airley	Randall, Lilah	

6.3. COD Regional Challenge at Tamworth

The Hockey NSW Regional Challenge was held in late February at the Tamworth Hockey Centre. This is where the u13s and u15s who participated in the summer COD program come together across all regions in the state play games for three days.

We had extreme heat then extreme, wet then extreme heat again but all involved had a great time !



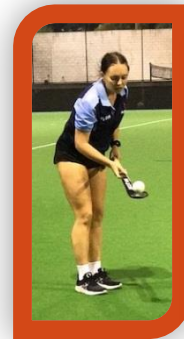
6.4. The Hockey Regional SEHA Schools Program

The Hockey Regional Coaching Coordinator Andy van Pelt ran the 2021 Schools Program in our region. This year's program was impacted by school closures due to COVID-19 restrictions.

Andy with the help of our Bella Sandy designed an online program for kids to do at home, which no other sport did while in lock down, that went down super well. It was called "Hockey at Home" and was a 4 week course of short little videos for kids to try hockey using house hold items.

This year we attended 6 compared to 15 schools last year in SEHA region:

- Leichhardt Public School
- Mortdale Public school
- 2 x Kambala Church of England Girls School
- Croydon Park Public School
- Panania North Public School
- St Michaels Catholic Primary Public School, Daceyville



7. SEHA REPRESENTATIVE DIRECTOR'S REPORT

Junior Rep field season

The 2021 season got off to a good start with Junior trials in March where we were able to select 14 teams – 2 in each age and gender group except U/11 where we had one each. This was the same number as 2019. We had more than 180 players in juniors, which was a great response considering the uncertainty with the COVID-19 pandemic.

We were fortunate to be able to complete the U/18 and U/15 season is full – with the Canberra carnival, the Moorebank U/15 carnivals and state championships being held. The Canberra carnival for our U13 and U/15 teams also took place.

Unfortunately, the pandemic intervened in the week following the U/15 girl's state championships and all Greater Sydney U/13 boys and girls' teams were unable to compete in state championships that were held as "regional only" events. This resulted in U/13 Moorebank carnival being postponed, then cancelled. Hockey NSW did intend to run a "Greater Sydney" metropolitan state championship, but in the end the extended nature of the lockdown put paid to that idea by late-August.

The U/11 season was also cut short – quite heartbreakingly just a few days before our teams were due to leave for Tamworth, the lockdown in the Eastern Suburbs and Inner West forced Sydney East to withdraw from the carnival – subsequently all Greater Sydney teams were ruled out of the carnival, which took place with regional teams only.

Thank you to all of our volunteers – coaches, managers and selectors and anyone else who helped out getting the teams together and on the field.

Open field season

The Sydney East open program, which last took place in 2019, started to bounce back from the difficulties it faced in 2019. We were able to enter both men and women's teams in the Open State Championships which took place on the June Long Weekend. Certainly, though it is a long way from completely back on its feet. A lack of volunteers who have contacts in the higher grades of Sydney hockey are hampering our ability to run the open rep program as effectively as we would like.

In an overall sense I would call 2021 a success – in both the men's and women's team we had a very young group of players who gave their all, supported by experienced coaches and committed managers. Thank you to all who helped this year.

However, I must reiterate that more volunteer support is needed in selection, coaching and administration. I can honestly say the open program is quite easy to run and would not be huge time commitment – it is simply too difficult to do when combined with the junior program – which is the current arrangement. SEHA invites clubs for support to help fill the convenor roles in this area.

Women's masters' season

Coming under the Representative Director's overall responsibility is the women's master's program, which is managed in full by Carolyn Davies, our incredible women's masters convenor. Disappointingly, Women's Masters State Championships were cancelled in 2021 for the second year in a row. Carolyn completed all the organisation required to set up 4 teams in the weekly SWHL comp in March 2021, and because of the late cancellation, the state championship teams were also arranged for 2021. Unfortunately, all of the workload of a full season, with less than half the hockey.



There were no SWHL results to report due to the abandonment of the season (see full report in s7.1).

Men's masters' season

Sydney East currently has one team in its men's master's program – an Over 50's team that played at the State Championships in Grafton in March 2021.

Sydney East is actively working to increase this footprint in men masters, in line with NSW Men's Masters Hockey's encouragement to see Sydney East enter more teams into state championships.

Sydney East Rep Hockey would highly value a contribution from our men's masters' members to this activity.

Indoor season

The 2021 Indoor State Championships have been rescheduled to January and February 2022. Preparations have been ongoing through September, October and November 2021.

Equipment

In 2021, Sydney East have purchased new numbered bibs to do away with the need to write numbers onto player's arms at rep trials.

We are also actively sourcing new goalkeeper smocks as our current supply is not sufficient due to our growth in teams. We also think the style of the current smocks is not in accordance with current trends.

Hockey NSW State Selections

In 2021, due to the inability of Greater Sydney team to enter U/13 State Championships, Sydney East was requested by Hockey NSW to confidentially provide a list of players that should be considered for U/13 state selection. Thank you to our U/13 selection panels who worked hard to identify these players.

12 Sydney East players were invited to attend the next stage of selection – but unfortunately those selection events and the U/13 National Carnival in Hobart were cancelled due the pandemic restrictions. These players are listed at the end of this report.

Sydney East is devastated for these players that they did not have this opportunity, but we wish them all the best in 2022.

Looking ahead to 2022

The SEHA rep committee is in desperate need for greater volunteer involvement in 2022.

While SEHA is very appreciative of its great coaches, managers and selectors that put their hand up each year – a larger core committee would provide greater support to the program. It would also de-risk the program from its current concentration of knowledge about the program.

SEHA has made considerable advances in the way it manages the program – such as the use of the website and SEHA revolutionise system to communicate information to stakeholders and arrange trials. This has made the core tasks we do much more manageable. Many of the templates for the web pages and emails only require minimal changes each year now they are established.



We will consider putting in place age coordinators who can form a part of the rep committee, a practice that works quite well at North West Sydney by all reports.

Please contact repconvenor@seha.com.au if you would like to assist – even the smallest amount of time can be put to use. This support will be particularly valuable in the open rep part of the program.

Chris Thuell
Director Representatives

7.1. SEHA Masters Men

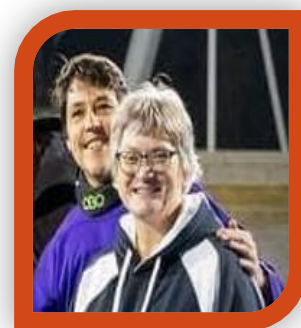
**Sydney East Hockey Association
 Men's Masters O/50 Representatives
 Grafton 2021**

Les Wilde (GK)
 Rob Howard
 Mick McDonald
 Mark Hillier
 Mark Rapaport
 Paul Collins
 Tony Furner (VC)
 Sean Glassford (C)
 Robert McDonald
 Rob Tremble
 Andrew Jones
 Mick Nair
 Glynn Daunt
 Matt Tremble
 Tom McDonald
 Rob Aqualina
 Simon White
 John King

Coach: John Glassford
Umpire: Curtis Glassford

7.2. SEHA Masters Women's- SWHL Competition

As everyone is fully aware, 2021 was again a very challenging year in all aspects of our lives. The Covid19 pandemic continued to impact all of us to varying degrees in multiple ways. From a hockey perspective, SEHA Women's Masters were well into their pre-season by mid-March having held pre-season trials for their 4 SWHL teams and also for the NSW State Champs and named the squads (these are listed at the end of this report). The 2021 SWHL season started as planned on 7-April, but unfortunately was abandoned halfway due to Covid-19.



Around this time the 2021 NSW State Championships were also cancelled due to Covid-19.

So the SWHL comp again unfortunately had a shortened season (6 games for div. 1 & div 2 out of 10; 9 out of 15 for div 3 and 7 out of 14 for div 4). Sadly, this also meant there weren't any formal division winners nor any finals series. However, the SWHL committee is to be congratulated again on facilitating half a season.

2021 SWHL Summary

- SEHA1 (after R6 of 10) – division 1: table position 1st (with 5 wins, 1 loss and 1 forfeit “win”). 25 goals for and 5 against. Marcia Scally was top scorer with 6 goals.
- SEHA2 – (after R6 of 10) – division 2: table position 2nd, only 1 point behind 1st position (with 4 wins and 2 losses). Scored 7 goals and conceded 3. Gayle Greer was top scorer with 6 goals and 4th top scorer across division 2.
- SEHA4 (div 3) – (after R6 of 10) – division 2: table position 2nd and only 1 point behind 1st position (with 6 wins, 1 draw and 2 losses). Scored 17 goals and conceded 10.
- SEHA3 (div 4) – (after R6 of 10) – division 2: table position 2nd and only 1 point behind 1st position (with 5 wins and 1 draw). Scored 18 goals and conceded 11. Sharon Westermeyer was top scorer with 6 goals.
- NB. Marcia and Sharon were also both joint 6th across all masters teams and all 4 divisions.

2021 SEHA Masters SWHL Teams Lists

SEHA1 (Div1)	SEHA2 (Div2)	SEHA4 (Div3)	SEHA3 (Div4)
1. Laura Anggadi	1. Alyson Ashe	1. Madonna Barrett	1. Sue Brady
2. Tracy Bradford (GK)	2. Amanda Bock	2. Maria Bradley	2. Lorelle Byers
3. Katrina Cochrane	3. Carolyn Davies (GK)	3. Kath Calokerinos	3. Jeanette Churchill (GK)
4. Sonya Finlayson	4. Cathey Eke	4. Steph Ingster (Capt)	4. April Cooper
5. Cindy Goodridge	5. Gayle Greer	5. Sue Jamieson	5. Robin Craig
6. Katherine Hughes	6. Kerrie Ann Gudmunson	6. Sonya Jenkins	6. Krystine Dempster
7. Ingrid Marchant	7. Liz Irvin	7. Julie Jirgens	7. Liesel Deveney
8. Kylie Norris	8. Kate Kelly	8. Trish McCabe	8. Julie Foreman
9. Carolyn Pitt	9. Danica Oades	9. Trish McClure	9. Judy Jones
10. Julie Prolov	10. Chae Phillips	10. Emily Moylan	10. Karen Morris
11. Mel Rosser	11. Kasey Proszenko	11. Carol Murphy	11. Jillian Parkin
12. Marcia Scally	12. Anne Redman	12. Sharon Parker	12. Carol Ann Perry
13. Nicola Skinner	13. Sue Roberts	13. Jo Scanlon	13. Roisin Smith
14. Gen Whitlam	14. Goose Smallfield	14. Beth Symonds	14. Ruth Standring
15. Julia Wilson	15. Eve Wilson	15. Linda Walsh	15. Karla Taylor
		16. Meredith Wells	16. Sharon Westermeyer
		17. Stacy Williams (GK)	17. Erin Whiddon
Manager: Carolyn Davies	Manager: Various	Manager: Yolanda de Winter	Manager: Laura Jones

I also want to acknowledge our 4 SWHL umpires:

Div1: Marilyn Brown Div2: Park Lee Div 3: Park Lee Div 4: Karen Wimmer

And finally congratulations to Marilyn Brown who was honored with Hockey Australia Life Membership.

The HA citation read:

“Marilyn Brown has been heavily involved in hockey within HNSW since the early 1970’s and continues to contribute to the present day, especially in her devoted service to umpiring and officiating. She has been a senior umpire, umpire manager, mentor and official involved in the development, administration and coordination of umpiring at grass roots level, NW State Championships, National and International Masters level. Marilyn is highly respected for her contribution to all facets to the game.”

“Brownie” continues to be our master’s div1 umpire at SWHL and State Champs.

Carolyn Davies
SEHA Women’ Masters Convenor



SEHA congratulates Marilyn Brown – awarded Hockey Australia Life Membership in 2021 for her outstanding service to hockey as an umpire and official from grass roots to the highest levels.

This follows Marilyn being a recipient of the Hockey NSW Life membership nominated by SEHA.

7.3. SEHA Junior Field Teams 2021

Sydney East Hockey Association U/11 Girls Team 2021	Sydney East Hockey Association U/11 Boys Team 2021
<p> Kiandra Brook Claire Campbell Mercedes Campese Bekele Cochrane Annabelle Davey Lauren Heaney Jemima Huxley Clancy Norris Erin Parmenter Annabelle Roxburgh (GK) Nell Tordoff Emilie Satchwell Genevieve Uzcilas Aoife Walsh-Sams (GK) Ella Whitehall Tara Williams Coach: Kathy Calokerinos Manager: Richard Satchwell Asst Coordinator Phil Sams </p>	<p> Mitchell Barker Charlie Broadbent Connor Charlton Ethan Choy Jagger Chinn Aaron Doyle Max Henson (GK) Sidharth Kale Braydon Rousell Alby Shepherd Lachlan Taylor Oscar Taylor Dylan Ulbrich Rhys Welsh Coach: Jeni Avery Manager: Paula Farrell Asst Coordinator Phil Sams </p>
	

SEHA u11 Girls and u11Boys 2021 at the Mothers Day Moorebank Carnival, Sydney

**Sydney East Hockey Association
U/13 – 1 Boys Team 2021**

Brayden Brook
Aurelien Coulet
Abdallah Dannawi
Riley Forchert
Joseph Francis
Ashton Fordham
Felix Fung (GK)
Zachary Jones
Hamza Kanawati
Hayden O’Kane
Jack Satchwell
Ashton Scally
Tomas Scally
Kaelan Vecellio

**Coach: Adrian Jones
Manager: Renee O’Kane**

**Sydney East Hockey Association
U/13 – 2 Boys Team 2021**

Xavier Blanch
Ivo Boardman
Sebastian Derrick
Harry Dietz
Jai Dimmock (GK)
Jeremy Doyle
Mark Everett
Harrison Hammond
Lewis Hanlen
Rex Newman
David Papo
Edgar Roger
Kai Stuetz
Vincent Wang

**Coach: Kathy Calokerinos & Jeni Avery
Manager: Bojan Papo & Agnes Fillippe**



SEHA U/13-1 boys



SEHA U/13-2 boys

Sydney East Hockey Association U/13 – 1 Girls Team 2021	Sydney East Hockey Association U/13 – 2 Girls Team 2021
Keela Callan Victoria Campbell Siala Ccohrane Amelia Cook Airley Goodridge Frankie Johnson Emily Ryan Lili Seebacher Piper Simpson Emilie Srdic Aislinn Walsh-Sams (GK) Tilda Tordoff Jess Weatherall Addison Wilson	Sophia Alvaro Aurora Beaumont Claire Campbell Miki Cooper Alessandra Giompaolo-Ferguson Lauren Heaney Ciara Jarvis Ella Jewell Madeline Kralj Adelaide Netting Lilah Randall Emilie Satchwell Aoife Walsh-Sams (GK)
Coach: Brad Goodridge Manager: Justine Smith	Coach: Katrina Cochrane Manager: Phillip Sams



SEHA U/13-1 Girls



SEHA U/13-2 girls

Sydney East Hockey Association U/15 – 1 Girls Team 2021	Sydney East Hockey Association U/15 – 2 Girls Team 2021
<p> Sofia Bray Angelina Foley Clementine Gerber Riley Kelleher Jana Markopoulos Daisy Martin Pia Martin Zara Matthews Daisy Noble Molly Robinson Charlotte Sainsbury Janine Southwell Madeline Tudehope Liliana Turner (GK) Monique Turner </p>	<p> Emerson Bonhote Siala Cochrane Amy Forchert Ella Godward Hayley Green Airley Goodridge Sarah McPhail Hannah Monaghan Amy Oades Amba Rose Satchwell Gracie Spiller Jess Weatherall Matilda Welsh (GK) Indie Whitford </p>
<p> Coach: Katrina Cochrane Manager: Janet Matthews </p>	<p> Coach: Cindy Goodridge Manager: Lisa Bonhote </p>

2021 FIELD STATE CHAMPIONSHIPS

Hockey New South Wales



2021 Under 15 Sydney East 1 Girls

Back Row: Lilliana Turner, Pia Martin, Sofia Bray, Daisy Noble, Molly Robinson, Riley Kelleher, Jana Markopoulos, Monique Turner, Janine Southwell; Front Row: Janet Matthews (Manager), Airley Goodridge, Charlotte Sainsbury, Zara Matthews, Daisy Martin, Madeleine Tudehope, Angelina Foley, Katrina Cochrane (Coach)



2021 FIELD STATE CHAMPIONSHIPS

Hockey New South Wales



2021 Under 15 Sydney East 2 Girls

Back Row: Lisa Bonhote (Manager), Amy Forchert, Gracie Spiller, Emerson Bonhote, Jessica Weatherall, Frankie Foster, Hayley Green, Matilda Welsh (GK); Front Row: Hannah Monaghan, Amba Rose Satchwell, Amy Oades, Indie Whifford, Emilie Srdic, Ella Godward, Siala Cochrane, Cindy Goodridge (Coach)



Sydney East Hockey Association U/15 – 1 Boys Team 2021	Sydney East Hockey Association U/15 – 2 Boys Team 2021
Zack Aramabewla Luke Broadbent Brayden Brook Victor Coulet Samuel McBeath Aidan Najdzion James Reynolds Finley Saunders Campbell Scally Marley Seebacher Oskar Smith Oliver Tordoff Henry Tyree Brayden Wilson (GK)	Riley Dimmock Aurelian Coulet Felix Fung (GK) Zac Jones Jack Laney Hugo Moore Elias Norved (GK) Callan Phan Jarred Potts Reece Rousell Tyler Rushbrook Jack Ryan Ashton Scally Tomas Scally Tully Shipton Tuomo Solness
Coach: Wade Johnson Manager: Tracey Najdzion	Coach: Marcia Scally Manager: Adrian Jones

Sydney East Hockey Association U/18 – 1 Boys Team 2021	Sydney East Hockey Association U/18 – 2 Boys Team 202
Keiran Brook Brendan Ius Kai Jones (GK) Jett Leong Toby Mallon Martin Pedersen-Clarke Medhi Rizvi Karl Smith Oskar Smith Coady Stone Rian Surti Matthew Thompson Orlando Travis Henry Tyree Morgan Veleski Jack Ward	Tom Alexander-Prideaux Will Brine Max Daly Jayden Els Jake Evans Curtis Glassford Zane Goodridge Gerard Hill Samir Murphy Edward Noble Aidan O'Dwyer Medhi Rizvi Xavier Scally Samuel Whitfield Jae Wilson <u>Shadows</u> Aidan Najdzion Campbell Scally
Coach: Adrian Jones Manager: Chris Stone	Coach: Doug Allison Manager: Sean Glassford

2021 FIELD STATE CHAMPIONSHIPS

Hockey New South Wales



2021 Under 15 Sydney East 1 Boys

Back Row: Wade Johnson (Coach), James Reynolds, Henry Tyree, Oskar Smith (C), Brayden Wilson (GK),
Marley Seebacher, Aidan Najdzion, Finley Saunders; Front Row: Zack Arambewela, Luke Broadbent,
Victor Coulet, Campbell Scally, Brayden Brook, Oliver Tordoff, Samuel MacBeath, Tracy Najdzion (Manager),



2021 FIELD STATE CHAMPIONSHIPS

Hockey New South Wales



2021 Under 15 Sydney East 2 Boys

Back Row: Adrian Jones (Manager), Tuomo Solness, Jack Laney, Tyler Rushbrook, Reece Rousell, Jarred Potts,
Henry Kaye-Charles, Jack Ryan; Front Row: Hugo Moore, Aurelien Coulet, Riley Dimmock, Callan Phan,
Felix Fung (GK), Zachary Jones, Ashton Scally, Marcia Scally (Coach), Tomas Scally (Not Pictured)



2021 FIELD STATE CHAMPIONSHIPS

Hockey New South Wales



2021 Under 18 Sydney East 1 Boys

Back Row: Chris Stone (Manager), Kai Jones, Coady Stone, Martin Pedersen-Clarke, Karl Smith, Keiran Brook, Matthew Thompson, Rian Surti, Adrian Jones (Coach); Front Row: Mehdi Rizvi, Oskar Smith, Henry Tyree, Toby Mallon, Jeff Leong, Jack Ward, Orlando Travis, Morgan Veleski



2021 FIELD STATE CHAMPIONSHIPS

Hockey New South Wales



2021 Under 18 Sydney East 2 Boys

Back Row: Thomas Alexander-Prideaux, Jake Evans, William Brine (C), Samuel Whiffield (C), Zane Goodridge (C), Edward Noble, Jaylen Els, Brayden Wilson (GK); Front Row: Doug Allison (Coach), Samir Murphy, Xavier Scally, Curtis Glassford, Gerard Hill, Aidan O'Dwyer, Max Daly, Jae Wilson, Sean Glassford (Manager)



Sydney East Hockey Association U/18 – 1 Girls Team 2021	Sydney East Hockey Association U/18 – 2 Girls Team 2021
Sienna Campese Phoebe Cox Chelsea Da Silva Sienna Da Silva Ruby Di Somma Sara Di Somma Sophia Jones Megan Keller Jana Markopoulos Grace Matthews (GK) Claire McDonald Lillian (Billy) Pritchard Abbey Roberts Abbie Sen Ashleigh Sperring Scarlett Thuell	Matilda Berowne Scarlett Blanch Sophie Brown Molly Busch Gabrielle Dietz (GK) Skylar-Rose Fitzsimmons Ella Fogerty Cate Heath Leilani Howitt Polly Kirton Ilse Knottenbelt Zara Matthews Lydia Najdzion Zoe Newman Dakota Thuell Juliette Triccas
Coach: Andrew Jones Manager: Sarah Sen	Coach: Emma Thuell Manager: Lorna Burton

2021 FIELD STATE CHAMPIONSHIPS

Hockey New South Wales



2021 Under 18 Sydney East 1 Girls

Back Row: Sarah Sen (Manager), Sienna Campese, Ashleigh Sperring, Phoebe Cox, Sophia Jones, Scarlett Thuell, Megan Keller, Lillian Pritchard, Andrew Jones (Coach); Front Row: Sienna Da Silva, Abbie Sen, Sara Di Somma, Abbey Roberts, Claire McDonald, Ruby Di Somma, Chelsea Da Silva, Grace Matthews (GK), Jana Markopoulos



2021 FIELD STATE CHAMPIONSHIPS

Hockey New South Wales



2021 Under 18 Sydney East 2 Girls

Back Row: Gabrielle Dietz (GK), Polly Kilton, Zoe Newman, Ella Fogarty, Juliette Triccas, Dakota Thuell, Ilse Knottenbelt, Lydia Najdzion; Front Row: Lorna Burton (Manager), Skylar Fitzsimmons, Scarlett Blanch, Sophie Brown, Molly Busch, Cate Heath, Zara Matthews, Emma Thuell (Coach)



**Sydney East Hockey Association
Open Women Team 2021**

Julia Bradley
Sarah Brine
Sienna Campese
Kathleen Chua
Megan Keller
Tara Jane
Ilse Knottenbelt
Lydia Najdzion
Lily Neilson
Tegan Neowhouse (GK)
Courtney Pearson
Lillian Pritchard
Destiny Peris
Dakota Thuell
Scarlett Thuell

Coach: Tim Kelly
Manager: Stephen Broadfoot

**Sydney East Hockey Association
Open Men Team 2021**

Harrison Benn
Oliver Benn
Keiran Brook
Miles Davis
Matt Fleming (GK)
Rashil Jetley
Jett Leong
Toby Mallon
Ian Pedersen-Clarke
Martin Pedersen-Clarke
Timothy Pritchard
Mehdi Rizvi
Simon Shilson-Josling (GK)
Coady Stone
Patrick Vastani

Coach: Micheal Dean
Manager: Chris Stone

8. SEHA Representative Honors

Australian Representatives 2021 Olympic National Team

2021 Kookaburra's Olympic year Tokyo

Kurt Lovett
Dylan Martin



2021 Hockeyroos Olympic year Tokyo

Jocelyn Bartram
Kaitlin Nobbs
Greta Hayes



Development Squad Rene Hunter

Sydney East 2021 Australian Indoor Representatives

Mens Open Indoor Squad

Thomas Miotto

U/18 Indoor Squad

Tegan Neowhouse

2021 NSW Representatives

NSW Pride Women

Jocelyn Bartram
Kaitlin Nobbs
Greta Hayes

NSW Pride Men

Dylan Martin
Kurt Lovett

Sydney East
2020-21 NSW & Squads Representatives
Juniors

U/13 boys squad Zachary Jones Brayden Brook Tomas Scally Ashton Scally Jack Satchwell Felix Fung	U/13 girls squad Airley Goodridge Jess Weatherall Emilie Srdic Piper Simpson Addison Wilson Aislinn Walsh-Sams
U/15 boys squad Oskar Smith Henry Tyree	U/15 girls squad Sofia Bray Jana Markopoulos Madeleine Tudehope Liliana Turner
U/15 boys team Oskar Smith Henry Tyree	U/15 girls team Jana Markopoulos Liliana Turner
U/18 boys squad (2020-21 AAP Squad) Keiran Brook Toby Mallon Kai Jones Orlando Travis	U/18 girls squad (2020-21 AAP Squad) Sienna Campese Chelsea Da Silva
U/18 boys team Keiran Brook Toby Mallon Orlando Travis	U/18 girls team Sienna Campese

Sydney East
2021-22 Hockey NSW
Athlete Acceleration Program (AAP) Squad Representatives

boys	girls
Kai Jones Jett Leong Toby Mallon Oskar Smith Coady Stone Orlando Travis Henry Tyree	Sienna Campese Ruby Di Somma Jana Markopoulos

Sydney East
2020-21 NSW & Squad Representatives
Seniors

U/21 mens squad	U/21 womens squad
Miles Davis Timothy Pritchard	Tegan Neowhouse Julia Bradley Isabella Sandy Grace Young
U/21 men team	U/21 women team
Miles Davis Timothy Pritchard	Tegan Neowhouse Julia Bradley Grace Young
NSW Pride Extended Squad Men	NSW Pride Extended Squad Women
Thomas Miotto Daine Richards	Jocelyn Bartram Kaitlin Nobbs Lizzie Rae

Sydney East

2022 Hockey NSW U/21 Squad Representatives

U/21 mens squad	U/21 womens squad
Miles Davis Timothy Pritchard Keiran Brook Rashil Jetley Patrick Vastani	Tegan Neowhouse Lili Nielsen Destiny Peris

Sydney East

2020-21 NSW Representatives

Masters

Over 34's	Over 40's
Nicole Curtis Katherine Hughes Danica Oades Natalie Sutton Blues: Laura Anggadi Louise Maraun	Katrina Cochrane Kristy Engisch Carolyn Davies (Mgr)
Over 45's	Over 50's
Allison Yeoland Sarah Dredge (SSHA but plays masters with SEHA)	Sonya Finlayson
Over 55's	Over 60's
Tracy Bradford Fiona Pak-Poy	Anne Howard Kirsty McIntosh Annette Smith

Sydney East Hockey Association Strategic Plan 2017 - 2021

Vision **SYDNEY EAST HOCKEY ASSOCIATION:** CHAMPION THE GROWTH OF HOCKEY.

Hockey NSW: Our vision is for Hockey NSW to be the leader on and off the field.

Hockey Australia: • Consistent Australian team performance and team success at 14 benchmark events • Stronger business model by sustained profits through diversified revenue • Increased participation across all levels of hockey • Highest standard of governance across whole of sport.








Purpose **SYDNEY EAST HOCKEY ASSOCIATION:** FOSTER A SAFE AND INCLUSIVE ENVIRONMENT THAT PROMOTES PARTICIPATION AND DEVELOPS HOCKEY WITHIN THE SYDNEY EAST COMMUNITY.

Hockey NSW: A sustainable and innovative organisation that provides an accessible sport of choice for everyone through a unified approach, leading the field with integrity, transparency and excellence.

Hockey Australia: • To achieve success with Australian teams • To grow the game of hockey in Australia • To govern the game of hockey in Australia

Strategic Pillar	1. PARTICIPATION	2. RELATIONSHIPS	3. OPERATIONS	4. PROMOTIONS & COMMUNICATIONS	5. FACILITIES
Objective	Attract new, retain existing and re-engage past people in hockey	Highly productive internal and external partnerships, networks and alliances	Strong finances, robust governance and effective management	Enhanced profile and increased engagement	Safe, quality and accessible facilities that support participation growth
Supporting Strategies	<ol style="list-style-type: none"> 1. Create links between local schools and clubs to provide a player pathway 2. Identify opportunities to make it easier and more cost-effective for families to participate in hockey 3. Provide development pathway for players, coaches, umpires and officials 4. Explore new, modified and social formats to adapt to changing consumer preferences 5. Reignite interest in hockey from past players 6. Identify and remove participation barriers to attract new players of all ages, abilities and backgrounds 7. Develop volunteer recruitment & recognition activities 	<ol style="list-style-type: none"> 1. Actively engage and collaborate with affiliated clubs to achieve mutually beneficial outcomes 2. Foster and preserve relationships and, work collaboratively with: <ol style="list-style-type: none"> a. Hockey NSW b. Local Government Associations c. Local businesses d. Local schools and educational institutions e. Local community organisations f. State and Federal government departments and agencies (e.g. NSW Office of Sport) 3. Association strategy aligns with Hockey Australia and Hockey NSW 4. Represent affiliated clubs in providing feedback to HNSW 	<ol style="list-style-type: none"> 1. Create an effective association and board structure that supports strategy 2. Align association governance with relevant ASC Sport Governance Principles 3. Develop a culture of member protection that promotes a safe, fair and inclusive environment 4. Identify and fully utilise governance components of Revolutionise system 5. Identify opportunities to support club administration 6. Develop appropriate procedure manuals, guides, checklists and templates for key roles 7. Implementation of succession planning for all key roles including Board Directors. 	<ol style="list-style-type: none"> 1. Develop a communication matrix to identify key stakeholders, messaging content and communication medium 2. Identify members skilled in social media to develop social/digital strategy and drive member engagement 3. Communicate SEHA strategy on a page 4. Fully utilise all communication and engagement modules and elements of Revolutionise system 5. Identify opportunities to work collaboratively with clubs on promotions and communications 6. Identify technologies and opportunities to amplify engagement 	<ol style="list-style-type: none"> 1. Identify and target relevant grant and funding opportunities 2. Work with clubs on developing a future facility improvements and maintenance plan 3. Identify innovative options to grow facility footprint e.g. multipurpose, half-field

10. SEHA Affiliated Clubs and Contacts

	<u>Bankstown Sports Hockey Club</u>	Graeme Barnard	0403 770 624 secretary@bankstownhockey.org.au
	<u>Bentstix Hockey Club</u>		bentstix.secretary@gmail.com
	<u>Briars Hockey Club</u>		secretary@briarshockey.com.au
	Canterbury	Judy Jones	<u>pivotalplayer@yahoo.com</u>
	Reevesby	Lauren Taylor	0421 455 823 -
	<u>Eastcoast Dolphins Women's Hockey Club</u>	Tanya Arathoon	0403 800 333
	<u>Easts Hockey Club</u>	Russell Hutchings	0423 256 874 secretary@eastshockey.club
	<u>Easts Women's Hockey Club</u>	Kathryn Francis	eastswomenshockey@gmail.com,
	<u>Esquires</u>	Leanne Bunker	0412 069 955



**Glebe
District
Hockey Club**

Criag Martin

glebesecretary@gmail.com

<https://glebehockey.org.au/contact-us/>



**Monterey
Hockey Club**

Allen Whitty

0424 930 185

secretary@montereyhockey.club



POHOGS

Sandy Templeton

0438 587 962



**St George
Randwick
Hockey Club**

Carolyn Davies

stgeorgerandwickhockeyclub@gmail.com

0416 262 432



**UNSW
Hockey Club**

secretary.unsw Hockey@gmail.com



Wests

Angelo Donni

0417 276 209



CONTACT US: administration@seha.com.au